

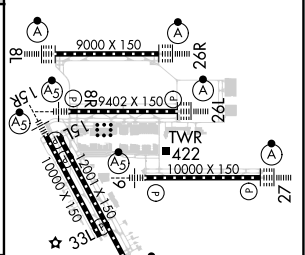
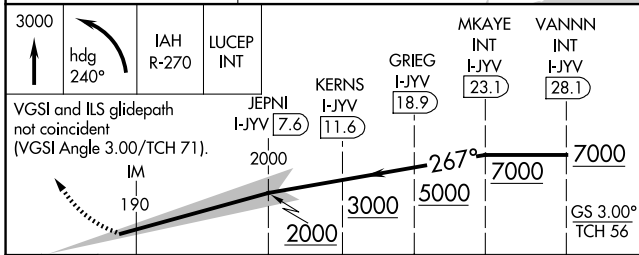
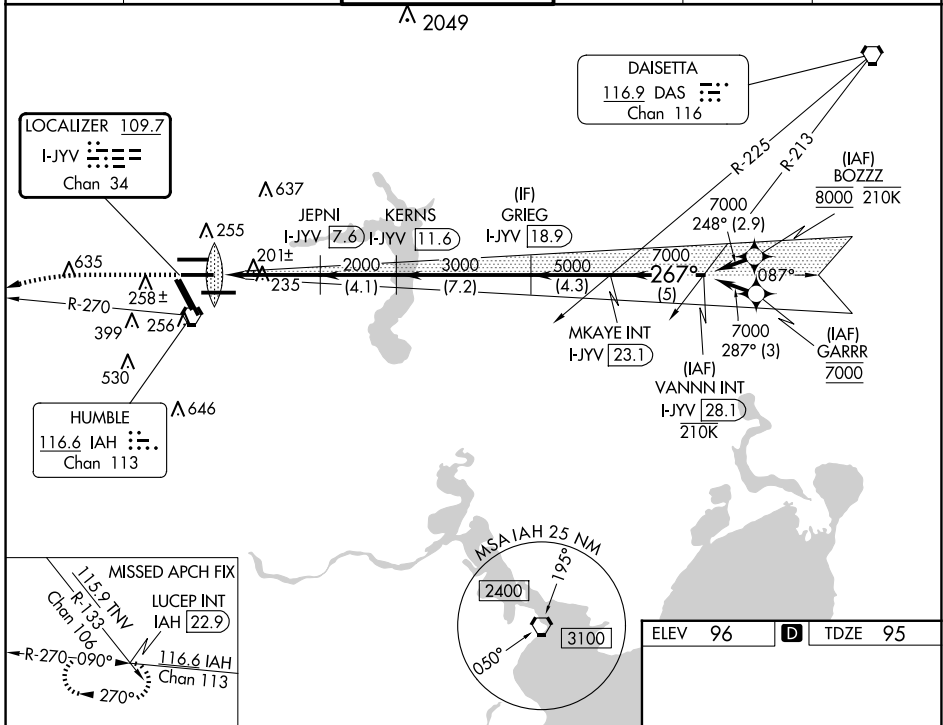
LOC/DME I-JYV <b>109.7</b> Chan <b>34</b>	APP CRS <b>267°</b>	Rwy Idg TDZE Apt Elev	<b>9402</b> <b>95</b> <b>96</b>
---	------------------------	-----------------------------	---------------------------------------

# ILS RWY 26L (CAT II & III)

GEORGE BUSH INTCNL/HOUSTON (IAH)

DME required. From BOZZZ, GARRR: RNAV 1-GPS required.		ALSF-2 	MISSED APPROACH: Climb to 3000 then left turn heading 240° and IAH VORTAC R-270 to LUCEP INT/IAH 22.9 DME and hold.
Simultaneous approach authorized with Rwy 26R and Rwy 27. Cat II: RVR 1000 authorized with specific OPSPEC, MSPEC, or LOA approval and use of autoland or HUD to touchdown.			

D-ATIS <b>124.05</b>	HOUSTON APP CON <b>120.05 379.1</b> EAST <b>124.35 316.15</b> WEST	HOUSTON TOWER <b>125.35 290.2</b>	GND CON <b>118.575</b>	CLNC DEL <b>128.1</b>	CPDLC
-------------------------	--	--------------------------------------	---------------------------	--------------------------	-------



3000	hdg 240°	IAH R-270	LUCEP INT	MKAYE INT I-JYV 23.1	VANN INT I-JYV 28.1
VGS and ILS glidepath not coincident (VGS Angle 3.00/TCH 71).					
JEPNI I-JYV 7.6		KERN I-JYV 11.6		GRIEG I-JYV 18.9	
2000		2000		267°	
3000		3000		7000	
5000		5000		7000	
1042'		5.8 NM		4.1 NM	
		7.2 NM		4.3 NM	
		5 NM			
CATEGORY	A	B	C	D	
S-ILS 26L	CAT II RA 100/12		100 DA 195		
S-ILS 26L	CAT III RVR 06				

TDZ/CL Rws 8R, 8L, 15R, 26R, 26L, 27 and 33L  
HIRL all Rws

SC-5, 17 APR 2025 to 15 MAY 2025

SC-5, 17 APR 2025 to 15 MAY 2025