

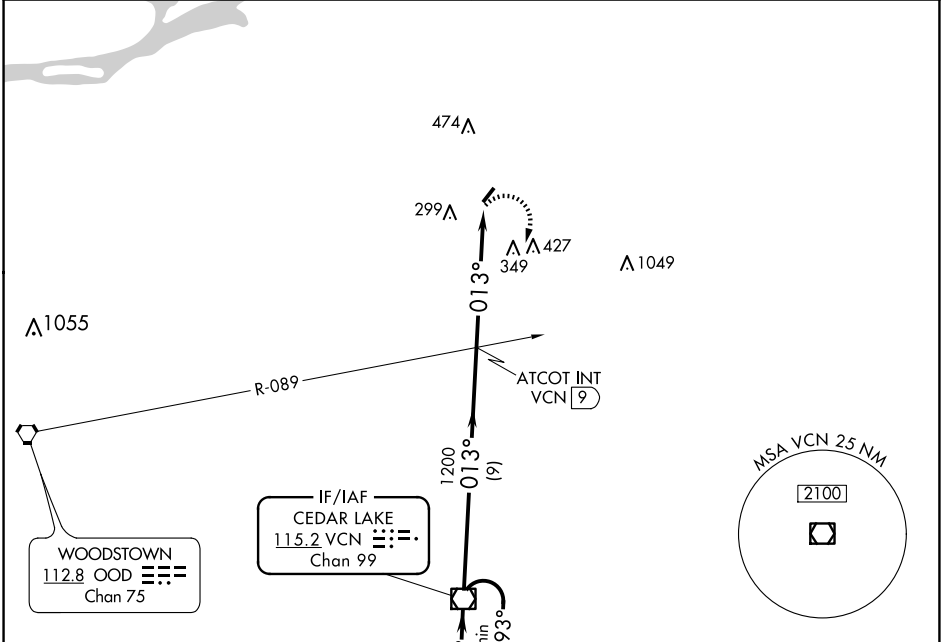
VOR/DME VCN 115.2 Chan 99	APP CRS 013°	Rwy Idg TDZE Apt Elev N/A N/A 150
---	------------------------	---

VOR-B
PINE VALLEY (19N)

Procedure NA at night. Visibility reduction by helicopters NA.
 Use Mount Holly altimeter setting, when not received, use Philadelphia Intl altimeter setting and increase MDA 20 feet.

MISSED APPROACH: Climbing right turn to 2100 direct VCN VOR/DME and hold.

MC GUIRE APP CON 126.475 363.8	UNICOM 123.0 (CTAF)
--	-------------------------------



NE-2, 17 APR 2025 to 15 MAY 2025

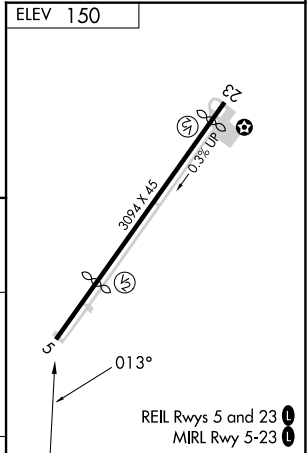
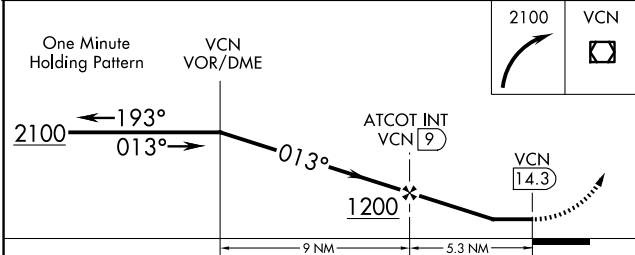
NE-2, 17 APR 2025 to 15 MAY 2025

ELEV 150

2100 NoPT 008° (16.6)

Procedure NA for arrivals at LEEAH on V166 southeast bound, on V1 and V229 southwest bound.

(IAF) LEEAH



CATEGORY	A	B	C	D	FAF to MAP 5.3 NM					
CIRCLING	900-1 750 (800-1)		NA		Knots	60	90	120	150	180
					Min:Sec	5:18	3:32	2:39	2:07	1:46