

WAAS CH <b>93513</b> <b>W01A</b>	APP CRS <b>010°</b>	Rwy Idg TDZE Apt Elev	<b>6604</b> <b>87</b> <b>91</b>
--	------------------------	-----------------------------	---------------------------------------

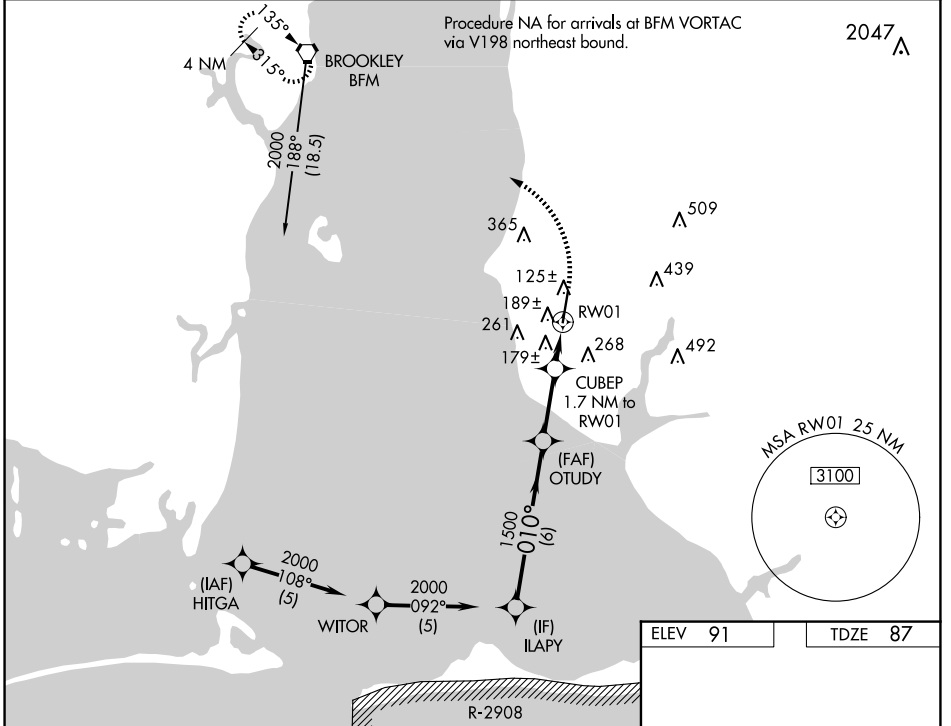
# RNAV (GPS) RWY 1

H L SONNY CALLAHAN (CQF)

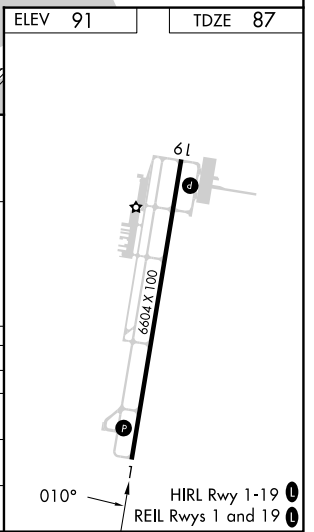
**⚠** Baro-VNAV NA when using Mobile Intl altimeter setting. For uncompensated Baro-VNAV systems, LNAV/VNAV NA below -15°C (5°F) or above 43°C (109°F). DME/DME RNP-0.3 NA. VDP NA with Mobile Intl altimeter setting. When local altimeter setting not received, use Mobile Intl altimeter setting and increase LPV DA to 329 feet, LNAV/VNAV DA to 517 feet, and all MDA 60 feet; increase LNAV Cats C/D visibility 1/8 SM and Circling Cats C/D 1/4 SM.

**MISSED APPROACH:**  
Climb to 700 then climbing left turn to 2000 direct BFM VORTAC and hold.

AWOS-3PT <b>118.425</b>	MOBILE APP CON ★ <b>118.5 269.3</b>	UNICOM <b>123.0 (CTAF) 0</b>
----------------------------	--	---------------------------------



Procedure Turn NA <b>2000</b>	ILAPY	OTUDY	CUBEP	RW01	RW01	BFM
GP 3.00° TCH 35	010°	1500	1500	1500	1500	*LNAV only.
	6 NM	2.6 NM	0.7 NM	1 NM		
CATEGORY	A	B	C	D		
LPV DA		287-3/4	200 (200-3/4)			
LNAV/VNAV DA		475-1 3/8	388 (400-1 3/8)			
LNAV MDA		440-1	353 (400-1)			
CIRCLING	560-1 469 (500-1)	580-1 489 (500-1)	720-1 3/4 629 (700-1 3/4)	740-2 649 (700-2)		



SE-4, 17 APR 2025 to 15 MAY 2025

SE-4, 17 APR 2025 to 15 MAY 2025