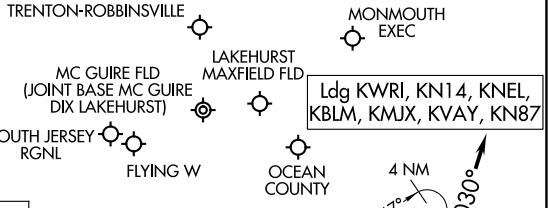


WAALK TWO ARRIVAL (RNAV)

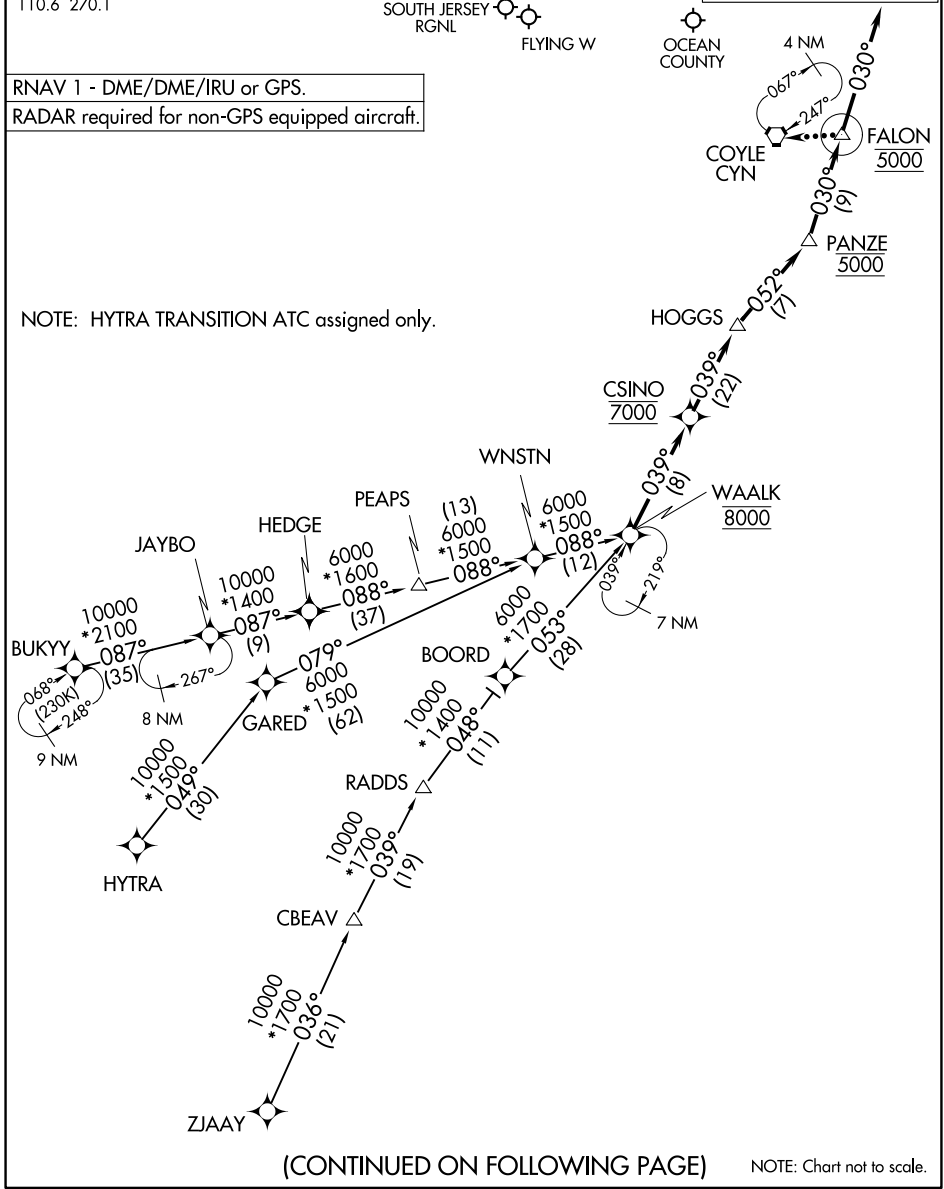
TOMS RIVER, NEW JERSEY

ATLANTIC CITY APP CON
 124.6 327.125
 MC GUIRE APP CON
 126.475 363.8
 KNEL ATIS
 276.525
 KWRI ATIS
 110.6 270.1



RNAV 1 - DME/DME/IRU or GPS.
 RADAR required for non-GPS equipped aircraft.

NOTE: HYTRA TRANSITION ATC assigned only.



(CONTINUED ON FOLLOWING PAGE)

NOTE: Chart not to scale.

NE-2, 17 APR 2025 to 15 MAY 2025

NE-2, 17 APR 2025 to 15 MAY 2025

WAALK TWO ARRIVAL (RNAV)

TOMS RIVER, NEW JERSEY

ARRIVAL ROUTE DESCRIPTION

BUKYY TRANSITION (BUKYY.WAALK2):

HYTRA TRANSITION (HYTRA.WAALK2):

ZJAAY TRANSITION (ZJAAY.WAALK2):

Landing all airports: From WAALK on track 039° to cross CSINO at 7000, then on track 039° to HOGGS, then on track 052° to cross PANZE at 5000, then on track 030° to cross FALON at 5000. Then on track 030°. Expect RADAR vectors to final approach course.

LOST COMMUNICATIONS:

After FALON, proceed direct CYN at 5000 feet, hold at CYN as published, descend in holding from 5000 to 3000 feet.

NE-2, 17 APR 2025 to 15 MAY 2025

NE-2, 17 APR 2025 to 15 MAY 2025