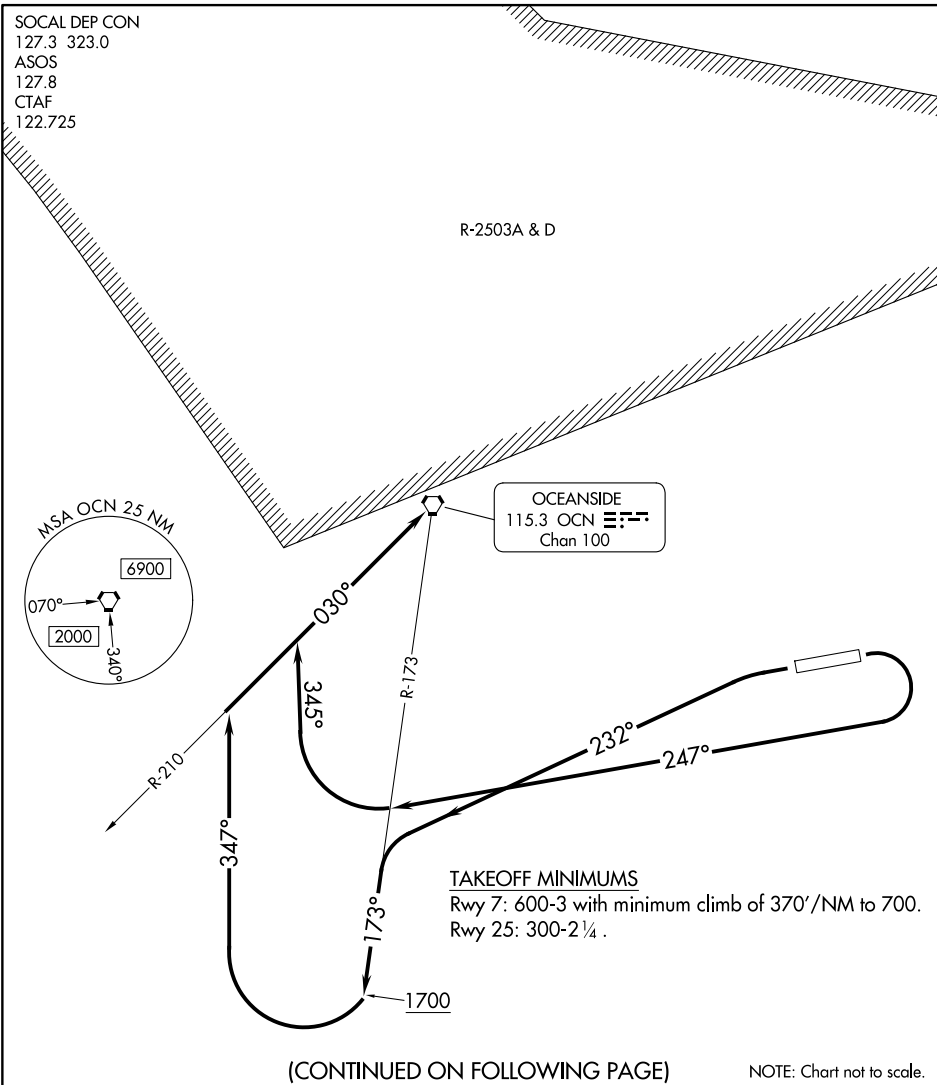


(OCN1.OCN) 24305

AL-5666 (FAA)

BOB MAXWELL MEML AIRFIELD (OKB)
OCEANSIDE, CALIFORNIA

OCEANSIDE ONE DEPARTURE (OBSTACLE)



DEPARTURE ROUTE DESCRIPTION

TAKEOFF RUNWAY 7: Climbing right turn on heading 247° to cross OCN R-173, then climbing right turn on heading 345° to intercept OCN R-210 to OCN VORTAC, then proceed on course. Do not exceed 200K until OCN VORTAC.

TAKEOFF RUNWAY 25: Climbing left turn on heading 232° to intercept OCN R-173 to 1700, then climbing right turn on heading 347° to intercept OCN R-210 to OCN VORTAC, then proceed on course. Do not exceed 200K until OCN VORTAC.

OCEANSIDE ONE DEPARTURE (OBSTACLE)

(OCN1.OCN) 31OCT24

OCEANSIDE, CALIFORNIA
BOB MAXWELL MEML AIRFIELD (OKB)

SW-3, 17 APR 2025 to 15 MAY 2025

SW-3, 17 APR 2025 to 15 MAY 2025

TAKEOFF OBSTACLE NOTES

- Rwy 7: Trees, vegetation beginning 71' from DER, 130' right of centerline, up to 50' AGL/83' MSL.
Trees beginning 177' from DER, 79' left of centerline, up to 50' AGL/83' MSL.
Trees, building beginning 322' from DER, 174' right of centerline, up to 50' AGL/87' MSL.
Tree 731' from DER, 378' left of centerline, 50' AGL/87' MSL.
Trees beginning 784' from DER, 34' left of centerline, up to 50' AGL/90' MSL.
Trees, pole beginning 1181' from DER, 9' right of centerline, up to 50' AGL/90' MSL.
Trees beginning 1432' from DER, 53' right of centerline, up to 50' AGL/96' MSL.
Trees beginning 1682' from DER, 98' right of centerline, up to 50' AGL/103' MSL.
Tree 1841' from DER, 797' left of centerline, 50' AGL/93' MSL.
Trees beginning 1933' from DER, 142' right of centerline, up to 50' AGL/106' MSL.
Trees beginning 1986' from DER, 155' left of centerline, up to 50' AGL/110' MSL.
Trees, transmission line beginning 2237' from DER, 111' left of centerline, up to 50' AGL/113' MSL.
Transmission line, pole beginning 2592' from DER, 3' left of centerline, up to 79' AGL/119' MSL.
Transmission line beginning 2781' from DER, 87' right of centerline, up to 70' AGL/106' MSL.
Transmission line, trees beginning 2825' from DER, 21' left of centerline, up to 85' AGL/123' MSL.
Transmission line 3442' from DER, 1068' right of centerline, 79' AGL/115' MSL.
Tree 3532' from DER, 1349' right of centerline, 50' AGL/142' MSL.
Trees beginning 3783' from DER, 1095' right of centerline, up to 50' AGL/198' MSL.
Trees beginning 4034' from DER, 243' right of centerline, up to 50' AGL/241' MSL.
Tree 4153' from DER, 696' left of centerline, 50' AGL/136' MSL.
Trees beginning 4285' from DER, 288' right of centerline, up to 50' AGL/280' MSL.
Trees beginning 4403' from DER, 651' left of centerline, up to 50' AGL/146' MSL.
Trees, pole, building beginning 4536' from DER, 33' right of centerline, up to 50' AGL/297' MSL.
Tree 4549' from DER, 10' left of centerline, 50' AGL/162' MSL.
Trees beginning 4602' from DER, 309' left of centerline, up to 50' AGL/172' MSL.
Trees beginning 4853' from DER, 264' left of centerline, up to 50' AGL/195' MSL.
Trees beginning 4892' from DER, 78' right of centerline, up to 50' AGL/306' MSL.
Trees beginning 5104' from DER, 220' left of centerline, up to 50' AGL/264' MSL.
Trees beginning 5289' from DER, 122' right of centerline, up to 50' AGL/320' MSL.
Trees, tower beginning 5355' from DER, 175' left of centerline, up to 50' AGL/267' MSL.
Trees beginning 5605' from DER 87' left of centerline, up to 50' AGL/290' MSL.
Trees beginning 5791' from DER 211' right of centerline, up to 50' AGL/339' MSL.
Trees, building beginning 1 NM from DER, 1' right of centerline, up to 50' AGL/375' MSL.
Trees, vegetation beginning 1.1 NM from DER, 30' left of centerline, up to 50' AGL/316' MSL.
Trees beginning 1.5 NM from DER, 1518' right of centerline, up to 50' AGL/274' MSL.
Trees beginning 1.6 NM from DER, 18' left of centerline, up to 50' AGL/342' MSL.
Transmission line 2.4 NM from DER, 3256' right of centerline, up to 66' AGL/425' MSL.
- Rwy 25: Trees beginning 29' from DER, 105' left of centerline, up to 50' AGL/83' MSL.
Tree 126' from DER, 129' right of centerline, 58' MSL.
Trees, vehicle on road beginning 174' from DER, 90' right of centerline, up to 50' AGL/83' MSL.
Trees, vehicle on road beginning 425' from DER, 2' right of centerline, up to 50' AGL/90' MSL.
Trees beginning 980' from DER, 28' right of centerline, up to 50' AGL/93' MSL.
Trees beginning 1032' from DER, 60' left of centerline, up to 50' AGL/87' MSL.
Trees beginning 1283' from DER, 16' left of centerline, up to 50' AGL/90' MSL.
Trees, transmission line, pole beginning 1680' from DER, 15' right of centerline, up to 50' AGL/169' MSL.
Trees beginning 1931' from DER, 117' right of centerline, up to 50' AGL/234' MSL.
Monument 2092' from DER, 719' right of centerline, 42' AGL/259' MSL.
Trees beginning 2129' from DER, 161' right of centerline, up to 50' AGL/287' MSL.
Trees, pole beginning 2248' from DER, 92' left of centerline, up to 50' AGL/228' MSL.
Trees, pole, transmission line beginning 2380' from DER, 129' right of centerline, up to 50' AGL/290' MSL.
Tree, poles beginning 4431' from DER, 1114' left of centerline, up to 223' MSL.
Transmission lines, poles beginning 5498' from DER, 363' right of centerline, up to 97' AGL/263' MSL.
Transmission line 1.2 NM from DER, 458' right of centerline, 66' AGL/215' MSL.

SW-3, 17 APR 2025 to 15 MAY 2025

SW-3, 17 APR 2025 to 15 MAY 2025