

VOR/DME GLL <b>114.2</b> Chan <b>89</b>	APP CRS <b>248°</b>	Rwy Idg TDZE Apt Elev <b>N/A</b> <b>N/A</b> <b>5020</b>
---	------------------------	--

**VOR-A**  
NORTHERN COLORADO RGNL (FNL)

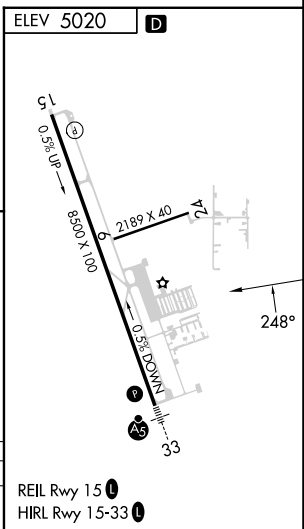
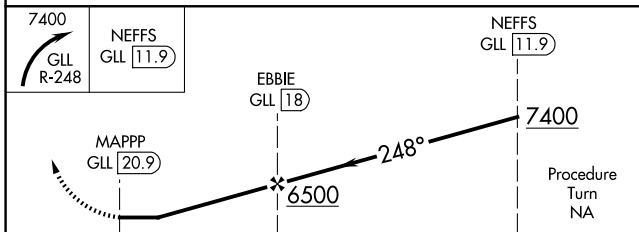
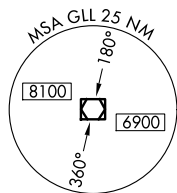
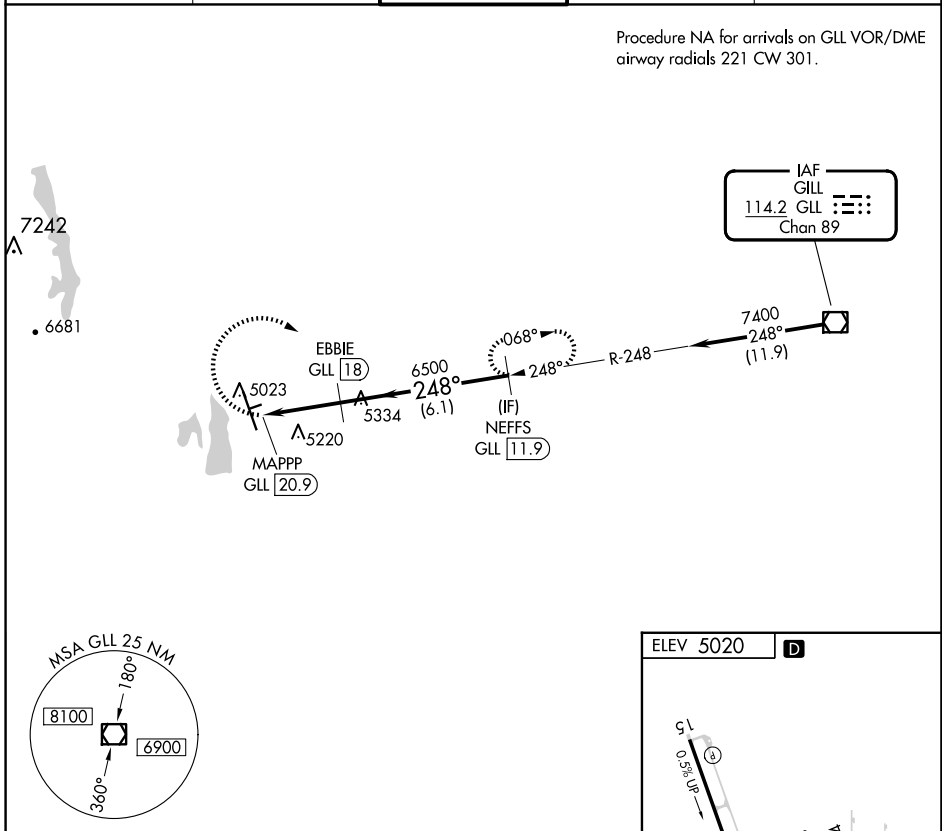
DME required.

⚠ Circling Rwy 24 NA at night. When local altimeter setting not received, use Denver Intl altimeter setting and increase all MDA 160 feet and Cat C/D visibility ½ SM.

MISSED APPROACH: Climbing right turn to 7400 via GLL VOR/DME R-248 to NEFFS/GLL 11.9 DME and hold.

ATIS <b>135.075</b>	DENVER APP CON <b>134.85 251.125</b>	NOCO TOWER★ <b>118.4</b> (CTAF) <b>0</b>	GND CON <b>121.65</b>	CLNC DEL <b>120.25</b> (When twr closed)
------------------------	---	---	--------------------------	--

Procedure NA for arrivals on GLL VOR/DME airway radials 221 CW 301.



CATEGORY	A	B	C	D
<b>C</b> CIRCLING	5500-1 480 (500-1)	5580-1 560 (600-1)	5580-1½ 560 (600-1½)	5760-2¼ 740 (800-2¼)

REIL Rwy 15 **0**  
HIRL Rwy 15-33 **0**

SW-1, 17 APR 2025 to 15 MAY 2025

SW-1, 17 APR 2025 to 15 MAY 2025