

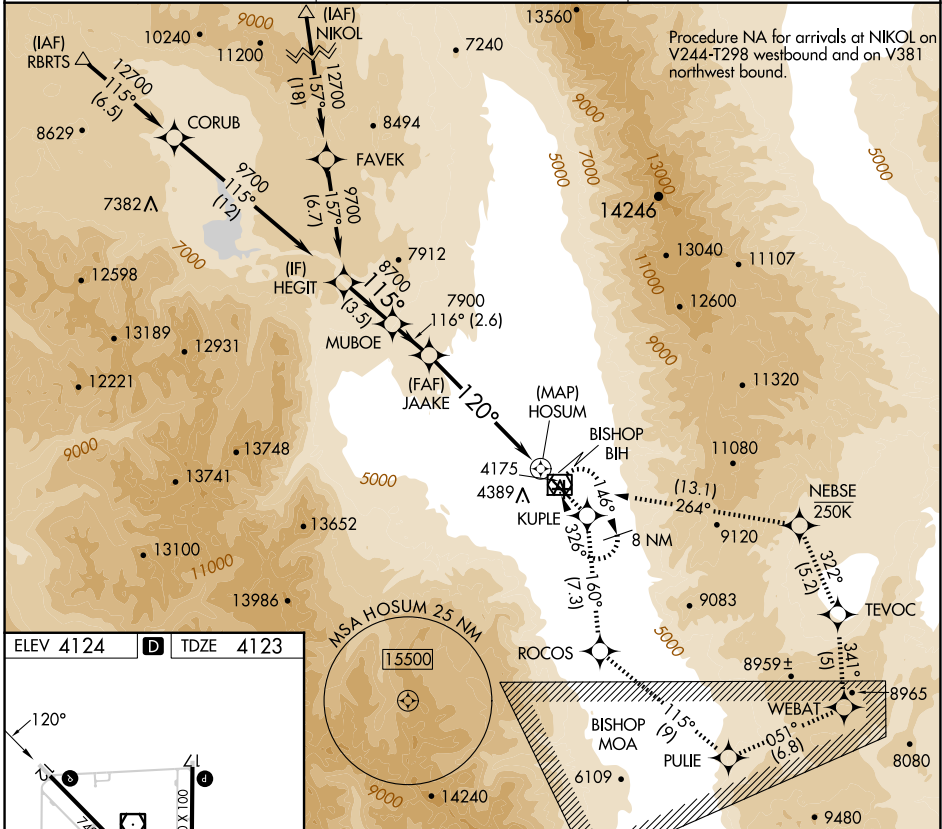
APP CRS	Rwy Idg	7098
120°	TDZE	4123
	Apt Elev	4124

RNAV (GPS) Y RWY 12

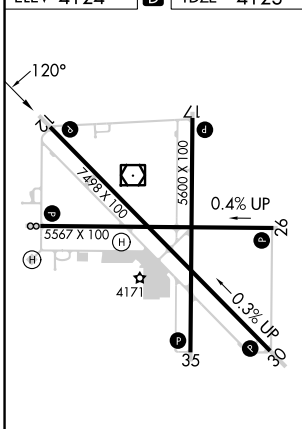
BISHOP (BIH)

RNP APCH-GPS.	MISSED APPROACH: (Do not exceed 250 KIAS until NEBSE) Climb to 13000 direct KUPLE and on track 160° to ROCOS and on track 115° to PULIE and on track 051° to WEBAT and on track 341° to TEVOC and on track 322° to NEBSE and on track 264° to BIH VOR/DME and hold.
<p>▼ Rwy 12, helicopter visibility reduction below $\frac{3}{4}$ SM NA.</p> <p>▲</p>	

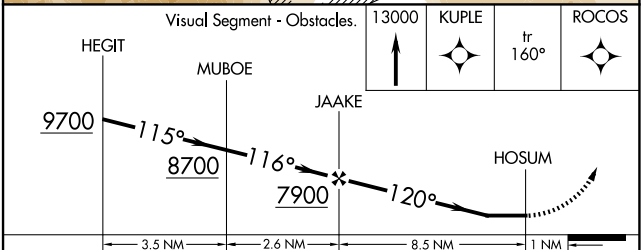
ASOS 119.025	OAKLAND CENTER 125.75 284.65	UNICOM 123.0 (CTAF) 0
------------------------	--	---------------------------------



ELEV 4124	D	TDZE 4123
-----------	----------	-----------



MIRL Rwys 8-26, 12-30, and 17-35 **0**
 REIL Rwys 12, 17, 30 and 35



CATEGORY	A	B	C	D
LNAV MDA	6600-1 $\frac{1}{4}$ 2477 (2500-1 $\frac{1}{4}$)	6600-1 $\frac{1}{2}$ 2477 (2500-1 $\frac{1}{2}$)	6600-3 2477 (2500-3)	NA

SW-2, 17 APR 2025 to 15 MAY 2025

SW-2, 17 APR 2025 to 15 MAY 2025