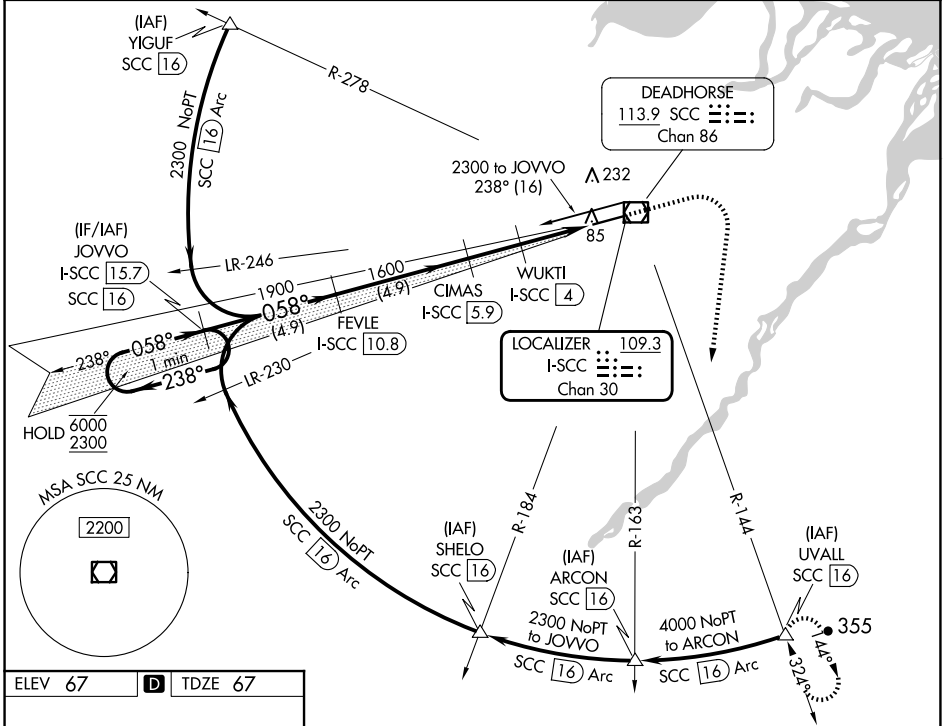


LOC/DME I-SCC <b>109.3</b> Chan <b>30</b>	APP CRS <b>058°</b>	Rwy Idg <b>6500</b> TDZE <b>67</b> Apt Elev <b>67</b>
---	------------------------	---

# ILS or LOC RWY 6 DEADHORSE (SCC) (PASC)

DME required. For inop ALS, increase S-ILS 6 Cat E visibility to RVR 4000 and S-LOC 6 Cats C/D/E to RVR 4500. *RVR 1800 authorized with use of FD or AP or HUD to DA.	MALSR 	MISSED APPROACH: Climb to 1500 then climbing right turn to 4000 on heading 170° and SCC VOR/DME R-144 to UVALL/SCC 16 DME and hold.
---	-----------	---

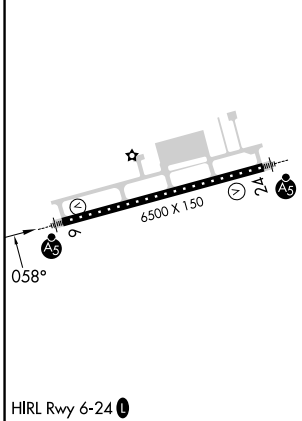
AFIS <b>118.4</b>	ANCHORAGE CENTER <b>134.4 370.9</b>	DEADHORSE RADIO <b>123.6 (CTAF)</b>
----------------------	--	--



AK, 17 APR 2025 to 12 JUN 2025

AK, 17 APR 2025 to 12 JUN 2025

ELEV 67	<b>D</b>	TDZE 67
---------	----------	---------



VGSi and ILS glidepath not coincident (VGSi Angle 3.00/TCH 50).		1500	4000	SCC	UVALL
JOVVO I-SCC 15.7		↑	hdg 170°	SCC R-144	△
One Minute Holding Pattern	FEVLE I-SCC 10.8	Use I-SCC DME when on the localizer course.			
6000 ← 238°	1900	CIMAS I-SCC 5.9	WUKTI I-SCC 4	I-SCC 2	I-SCC 1.3
2300 058°	1600	1600	980	→	
GS 3.00°	← 4.9 NM	← 4.9 NM	← 1.9 NM	← 0.8 NM	
TCH 58					
CATEGORY	A	B	C	D	E
S-ILS 6*	267/24 200 (200-1/2)				
S-LOC 6	360/24 293 (300-1/2)				
<b>C</b> CIRCLING	540-1 473 (500-1)	580-1 1/2 513 (600-1 1/2)	620-2 553 (600-2)		