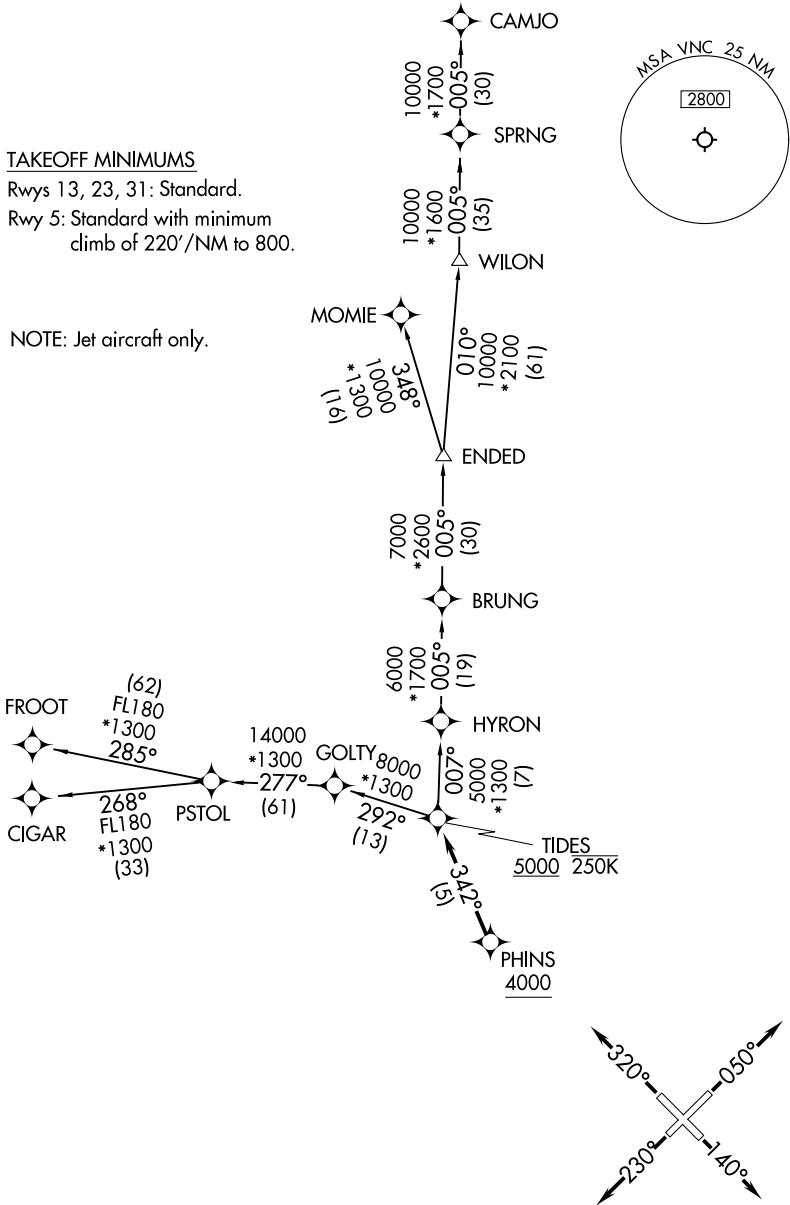


TAMPA DEP CON 119.65 353.575 AWOS-3 119.275 CLNC DEL 118.25	RNAV 1 - DME/DME/IRU or GPS. From PSTOL - GPS.	TOP ALTITUDE: ASSIGNED BY ATC.
	RADAR required for non-GPS equipped aircraft.	

TAKEOFF MINIMUMS
Rwys 13, 23, 31: Standard.
Rwy 5: Standard with minimum
climb of 220' /NM to 800.

NOTE: Jet aircraft only.



NOTE: Chart not to scale.

(CONTINUED ON FOLLOWING PAGE)

SE-3, 17 APR 2025 to 15 MAY 2025

SE-3, 17 APR 2025 to 15 MAY 2025



DEPARTURE ROUTE DESCRIPTION

TAKEOFF RUNWAY 5: Climb on heading 050° or as assigned by ATC, for RADAR vectors to PHINS, thence. . . .
TAKEOFF RUNWAY 13: Climb on heading 140° or as assigned by ATC, for RADAR vectors to PHINS, thence. . . .
TAKEOFF RUNWAY 23: Climb on heading 230° or as assigned by ATC, for RADAR vectors to PHINS, thence. . . .
TAKEOFF RUNWAY 32: Climb on heading 320° or as assigned by ATC, for RADAR vectors to PHINS, thence. . . .

. . . .on track 342° to cross TIDES at or above 5000 and at or below 250K. Maintain ATC assigned altitude, expect clearance to filed altitude within 10 minutes after departure.

CAMJO TRANSITION (TIDES1.CAMJO)
CIGAR TRANSITION (TIDES1.CIGAR)
FROOT TRANSITION (TIDES1.FROOT)
MOMIE TRANSITION (TIDES1.MOMIE)

SE-3, 17 APR 2025 to 15 MAY 2025

SE-3, 17 APR 2025 to 15 MAY 2025