

APP CRS	Rwy Idg	<b>3005</b>
<b>359°</b>	TDZE	<b>60</b>
	Apt Elev	<b>62</b>

# RNAV (GPS) RWY 36

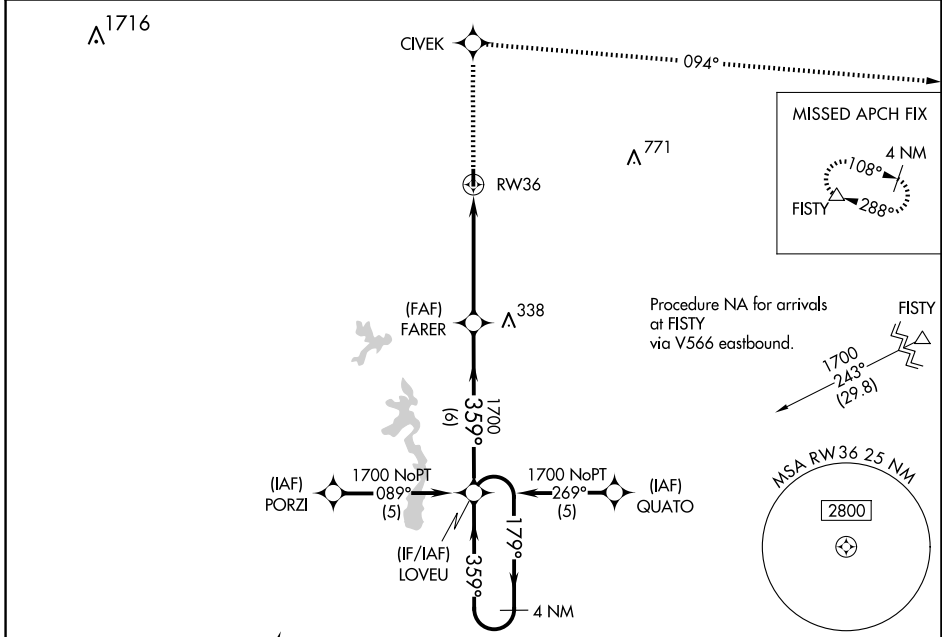
BUNKIE MUNI (2R6)

**NA** DME/DME RNP-0.3 NA. Visibility reduction by helicopters NA. Use Alexandria Intl altimeter setting; when not received, use Esler Rgnl altimeter setting.

**MISSED APPROACH:** Climb to 4000 direct CIVEK and right turn via 094° track to FISTY and hold.

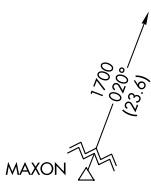
**POLK APP CON**  
**125.4 302.2**

**CTAF**  
**122.9**



SC-4, 17 APR 2025 to 15 MAY 2025

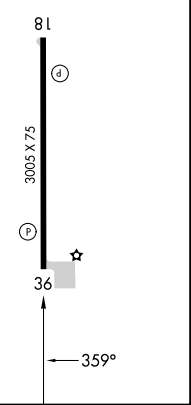
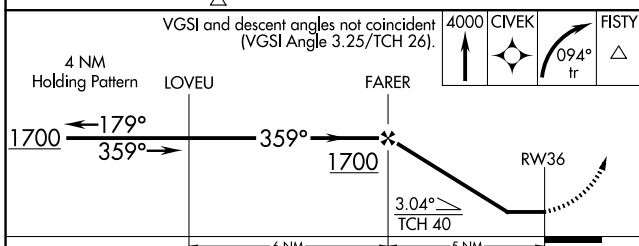
SC-4, 17 APR 2025 to 15 MAY 2025



Procedure NA for arrivals at MAXON via V222 southwest bound.

ELEV	<b>62</b>	TDZE	<b>60</b>
------	-----------	------	-----------

REIL Rwy 18 and 36 **1**  
MIRL Rwy 18-36 **1**



CATEGORY	A	B	C	D
LNVA MDA	580-1 520 (600-1)		NA	
CIRCLING	580-1 518 (600-1)	660-1 598 (600-1)	NA	