

AL-6039 (FAA)

DALLAS-FORT WORTH INTL (DFW)

DALLAS-FT WORTH, TEXAS

## BRDJE FIVE ARRIVAL (RNAV) Transition Routes

LONE STAR APP CON  
125.025 263.025  
D-ATIS ARR  
123.775

RNAV 1 - DME/DME/IRU or GPS.

RADAR required.

NOTE: Jet aircraft only.

NOTE: For use when DFW is operating in a north flow.  
When DFW is in south flow, expect and file the  
SEEV (RNAV) STAR.

NOTE: JRHED Transition: Do not file - to be assigned by ATC.

NOTE: PROWD Transition: Do not file - to be assigned by ATC.

NOTE: CHMLI Transition: Do not file - to be assigned by ATC.

NOTE: AXEE and RRONY Transitions for aircraft filing FL230 and below.

## AXXEE TRANSITION (AXXEE.BRDJE5)

CHMLI TRANSITION (CHMLI.BRDJE5)

FEWWW TRANSITION (FEWWW.BRDJE5)

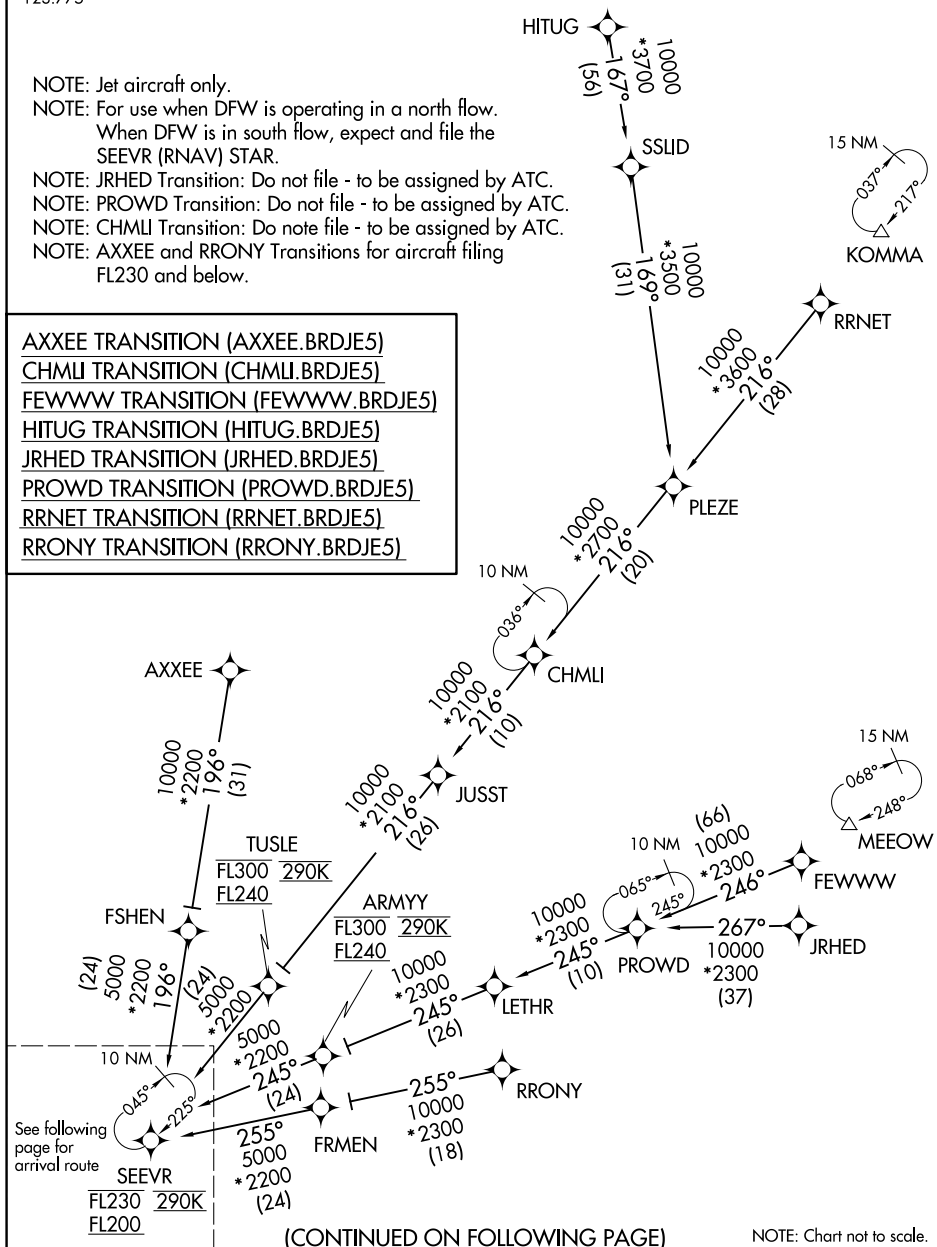
HITUG TRANSITION (HITUG.BRDJE5)

JRHED TRANSITION (JRHED.BRDJE5)

PROWD TRANSITION (PROWD.BRDJE5)

RRNET TRANSITION (RRNET BRDJF5)

RRONY TRANSITION (RRONY.BRDJE5)



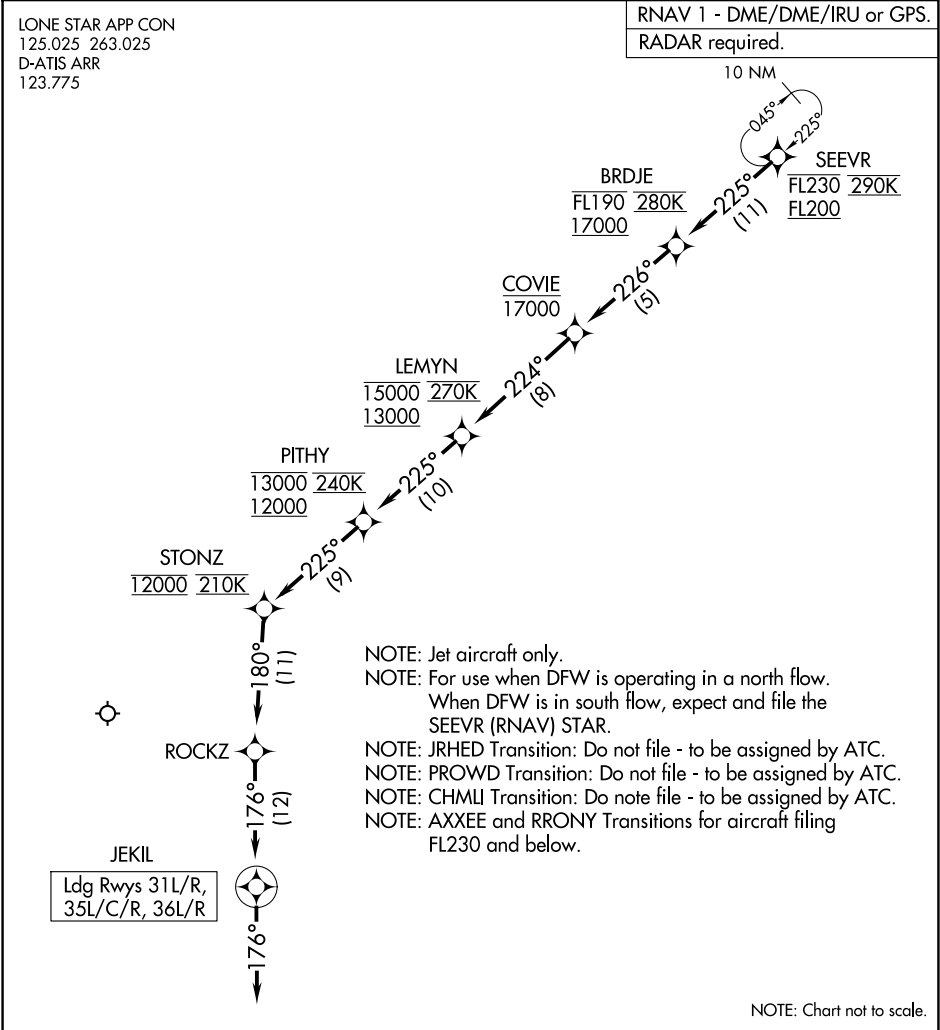
BRDJE FIVE ARRIVAL (RNAV) Transition Routes

(SEEVR.BRDJE5) 11JUL24

DALLAS-FT WORTH, TEXAS

DALLAS-FORT WORTH INTL (DFW)

SC-2, 17 APR 2025 to 15 MAY 2025



ARRIVAL ROUTE DESCRIPTION

From SEEV on track 225° to cross BRDJE between 17000 and FL190 and at 280K, then on track 226° to cross COVIE at or below 17000, then on track 224° to cross LEMYN between 13000 and 15000 and at 270K, then on track 225° to cross PITHY between 12000 and 13000 and at 240K, then on track 225° to cross STONZ at 12000 and at 210K, then on track 180° to ROCKZ, then on track 176° to JEKIL, then on track 176°.

Expect RADAR vectors to final approach course.