

WAAS CH <b>93825</b> <b>W03A</b>	APP CRS <b>027°</b>	Rwy Idg TDZE <b>36</b> Apt Elev <b>36</b>	<b>5500</b>
--	------------------------	---	-------------

# RNAV (GPS) RWY 3

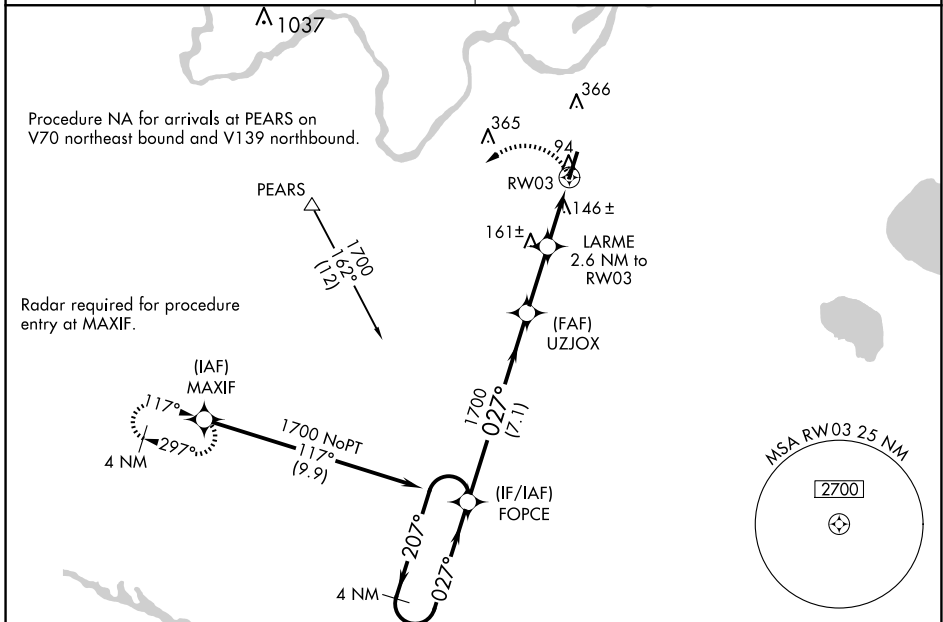
PLYMOUTH MUNI (PMZ)

**⚠** Use Northeastern Rgnl altimeter setting; when not received, use Coastal Carolina Rgnl altimeter setting and increase all MDA 80 feet; increase all Cat C visibilities 1/4 SM. When VGSi inop, procedure NA at night. DME/DME RNP-0.3 NA. Visibility reduction by helicopters NA.

**MISSED APPROACH:** Climbing left turn to 2000 direct MAXIF and hold.

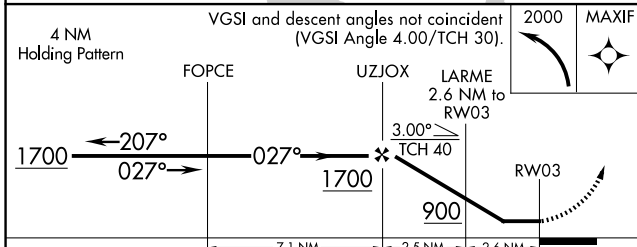
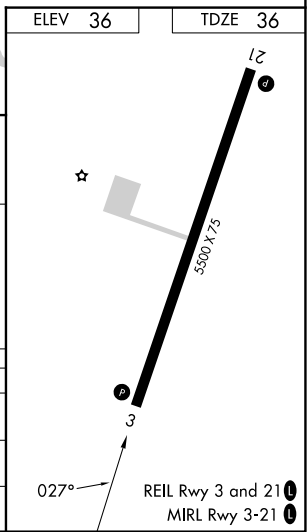
CHERRY POINT APP CON  
**119.35 377.175**

UNICOM  
**122.8 (CTAF) 1**



SE-2, 17 APR 2025 to 15 MAY 2025

SE-2, 17 APR 2025 to 15 MAY 2025



CATEGORY	A	B	C	D
LP MDA	440-1	404 (500-1)	440-1 1/8 404 (500-1 1/8)	NA
LNAV MDA	460-1	424 (500-1)	460-1 1/4 424 (500-1 1/4)	NA
CIRCLING	520-1 484 (500-1)	720-1 684 (700-1)	720-2 684 (700-2)	NA