

WAAS CH <b>99713</b> <b>W09A</b>	APP CRS <b>093°</b>	Rwy Idg TDZE Apt Elev	<b>5000</b> <b>37</b> <b>37</b>
----------------------------------------	------------------------	-----------------------------	---------------------------------------

# RNAV (GPS) RWY 9

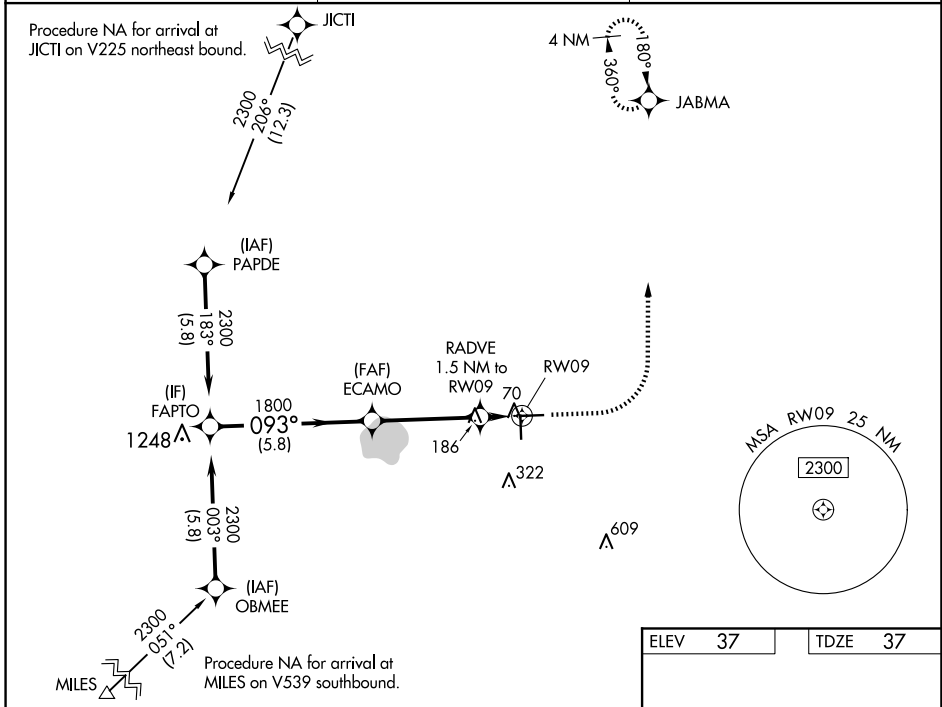
IMMOKALEE RGNL (IMM)

RNP APCH.

▼ For uncompensated Baro-VNAV systems, LNAV/VNAV NA below 0°C (32°F) or above 54°C (130°F).

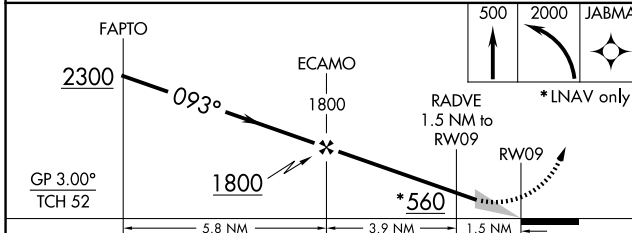
MISSED APPROACH: Climb to 500 then climbing left turn to 2000 direct JABMA and hold.

AWOS-3 <b>118.525</b>	FORT MYERS APP CON ★ <b>124.125 371.85</b>	CTAF <b>122.9 0</b>
--------------------------	-----------------------------------------------	------------------------

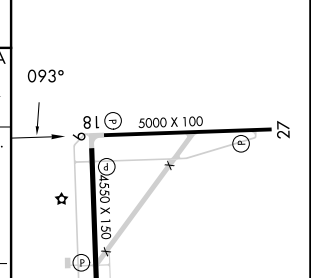


SE-3, 17 APR 2025 to 15 MAY 2025

SE-3, 17 APR 2025 to 15 MAY 2025



ELEV 37	TDZE 37
---------	---------



CATEGORY	A	B	C	D
LPV DA		287-1	250 (300-1)	
LNAV/VNAV DA		287-1	250 (300-1)	
LNAV MDA	440-1	403 (500-1)	440-1½	403 (500-1½)
CIRCLING	500-1 463 (500-1)	640-1 603 (700-1)	640-1¾ 603 (700-1¾)	680-2 643 (700-2)

REIL Rwy 9, 18, 27, and 36 0  
MIRL Rwy 9-27 and 18-36 0