

WAAS CH <b>45922</b> <b>W18A</b>	APP CRS <b>175°</b>	Rwy Idg TDZE Apt Elev	<b>4001</b> <b>532</b> <b>532</b>
----------------------------------------	------------------------	-----------------------------	-----------------------------------------

# RNAV (GPS) RWY 18

LOCKHART MUNI (50R)

RNP APCH.

**▽** Baro-VNAV NA. Use San Marcos altimeter setting, when not received,  
**△** NA use Austin-Bergstrom Intl altimeter setting and increase all DA 16 feet,  
all MDA 20 feet; increase LNAV Cat B visibility ¼ SM.

MISSED APPROACH: Climb to 4000  
direct EDIVE and on track 095° to  
SEEDS and hold.

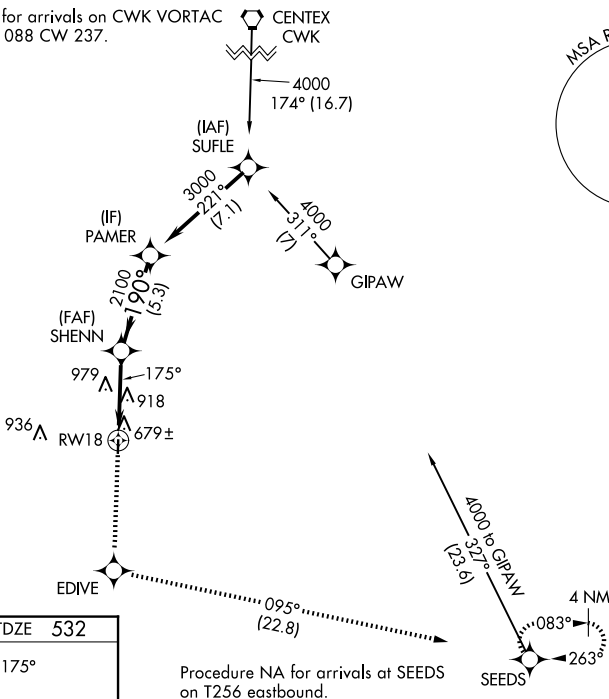
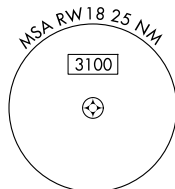
AUSTIN APP CON  
**120.875 270.25**

UNICOM  
**122.8 (CTAF) 0**

Procedure NA for arrivals on CWK VORTAC  
airway radials 088 CW 237.

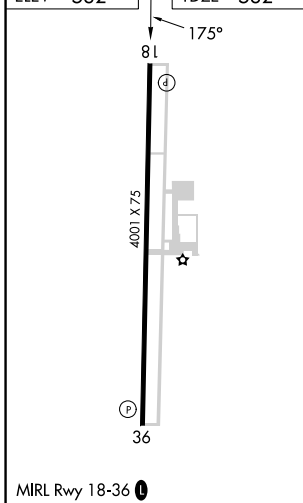
CENTEX  
CWK

**△** 1615



SC-3, 17 APR 2025 to 15 MAY 2025

ELEV 532	TDZE 532
----------	----------



Procedure NA for arrivals at SEEDS  
on T256 eastbound.

4000	EDIVE	tr 095°	SEEDS	VGSI and RNAV glidepath not coincident (VGSI Angle 3.50/TCH 24).
↑	✧		✧	
SHENN 2100		PAMER 3000		
RWY 18		2100		GP 3.00° TCH 40
4.8 NM		5.3 NM		
CATEGORY	A	B	C	D
LPV DA	815-1 283 (300-1)			NA
LNAV/VNAV DA	883-1¼ 351 (400-1¼)			NA
LNAV MDA	1260-1 728 (800-1)		1260-2 728 (800-2)	NA