

NOTE: DME/DME/IRU or GPS required.

NOTE: RNAV 1.

NOTE: Turbojets only.

NOTE: Takeoff Rwy 8, 16L/R, 17L/R, 34L/R, 35L/R - RADAR required for non-GPS equipped aircraft.

NOTE: Rwy 25 Departures - RADAR required.

NOTE: Accelerate to 250K or greater upon reaching 10000. If slower speed is required to meet crossing restrictions advise CLNC DEL prior to taxi.

NOTE: For non-GPS equipped aircraft TXC DME must be operational.

**TOP ALTITUDE:  
FL230**

D-ATIS DEP

134.025

CLNC DEL

118.75

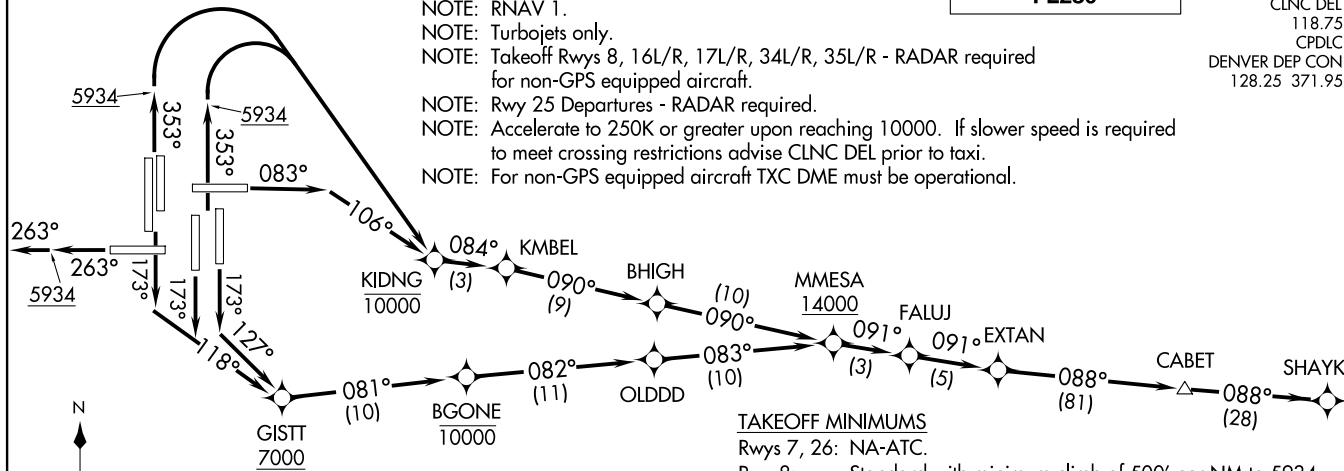
CPDLC

DENVER DEP CON

128.25 371.95

(EXTAN7.SHAYK) 21168  
EXTAN SEVEN DEPARTURE (RNAV)

AL-9077 (FAA)

DENVER INTL (DEN)  
DENVER, COLORADOTAKEOFF MINIMUMS

Rwys 7, 26: NA-ATC.

Rwy 8: Standard with minimum climb of 500' per NM to 5934 then minimum climb of 260' per NM to 14000.

Rwy 16L: Standard with minimum climb of 245' per NM to 14000.  
Rwy 16R: Standard with minimum climb of 450' per NM to 5934 then minimum climb of 225' per NM to 14000.

Rwy 17L: Standard with minimum climb of 465' per NM to 5934 then minimum climb of 280' per NM to 14000.

Rwy 17R: Standard with minimum climb of 465' per NM to 5934 then minimum climb of 250' per NM to 14000.

Rwy 25: Standard with minimum climb of 400' per NM to 5934.

Rwy 34L: Standard with minimum climb of 500' per NM to 5934 then minimum climb of 220' per NM to 14000.

Rwy 34R: Standard with minimum climb of 500' per NM to 5934 then minimum climb of 230' per NM to 14000.

Rwys 35L/R: Standard with minimum climb of 500' per NM to 5934 then minimum climb of 240' per NM to 14000.

(NARRATIVE ON FOLLOWING PAGE)

EXTAN SEVEN DEPARTURE (RNAV)  
(EXTAN7.SHAYK) 17JUN21DENVER, COLORADO  
DENVER INTL (DEN)



DEPARTURE ROUTE DESCRIPTION

TAKEOFF RUNWAY 8: Climb on heading 083° to intercept course 106° to cross KIDNG at or below 10000, then on track 084° to KMBEL, then on track 090° to BHIGH, then on track 090° to cross MMESA at or above 14000, thence . . . .

TAKEOFF RUNWAYS 16L/R, 17R: Climb on heading 173° to intercept course 118° to cross GISTT at or above 7000, then on track 081° to cross BGONE at or below 10000, then on track 082° to OLDDD, then on track 083° to cross MMESA at or above 14000, thence . . . .

TAKEOFF RUNWAY 17L: Climb on heading 173° to intercept course 127° to cross GISTT at or above 7000, then on track 081° to cross BGONE at or below 10000, then on track 082° to OLDDD, then on track 083° to cross MMESA at or above 14000, thence . . . .

TAKEOFF RUNWAY 25: Climb on heading 263° to 5934, then continue climb on heading 263° or as assigned by ATC for RADAR vectors to EXTAN, thence . . . .

TAKEOFF RUNWAYS 34L/R, 35L/R: Climb on heading 353° to 5934, then climbing right turn direct to cross KIDNG at or below 10000, then on track 084° to KMBEL, then on track 090° to BHIGH, then on track 090° to cross MMESA at or above 14000, thence . . . .

. . . . on depicted route to SHAYK, maintain FL230 or filed lower altitude, expect higher filed altitude 10 minutes after departure.

SW-1, 17 APR 2025 to 15 MAY 2025

SW-1, 17 APR 2025 to 15 MAY 2025