

LARKS THREE ARRIVAL

AL-9077 (FAA)

DENVER, COLORADO

DENVER APP CON
 120.35 379.3
 APA ATIS
 120.3
 BJC ATIS
 126.25
 CFO ATIS
 119.025
 DEN D-ATIS ARR
 125.6 379.9
 FNL ATIS
 135.075
 KBKF ATIS*
 119.675 259.3

GILL
 114.2 GLL
 Chan 89

NORTHERN
 COLORADO
 RGNL

GREELEY-
 WELD COUNTY

DENVER
 117.9 DEN
 Chan 126

ROCKY
 MOUNTAIN
 METRO

JEFFCO
 115.4 BJC
 Chan 101

DENVER
 INTL
 COLORADO
 AIR AND
 SPACE
 PORT

RED TABLE
 113.0 DBL
 Chan 77

BUCKLEY
 SPACE FORCE
 BASE

CENTENNIAL

LARKS TURBOJET VERTICAL NAVIGATION PLANNING INFORMATION

Expect 17000 250K
 or as assigned by ATC.

PAYDD

FALCON
 116.3 FGF
 Chan 110

HUUGE

TERRO

MURFE

BLUE MESA
 114.9 HBU
 Chan 96

BLACK FOREST
 112.5 BRK
 Chan 72

HICKY

MAA FL450
 FL200
 267°
 (74)

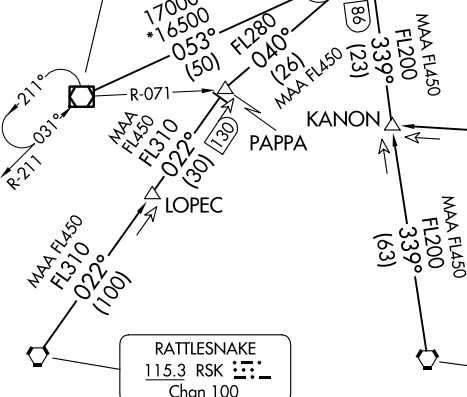
PUEBLO
 116.7 PUB
 Chan 114

KANON

MAA FL450
 FL200
 339°
 (63)

RATTLESNAKE
 115.3 RSK
 Chan 100

ALAMOSA
 113.9 ALS
 Chan 86



NOTE: Adjacent STAR is POWDR ARRIVAL.
 NOTE: RADAR required.
 NOTE: Chart not to scale.

(CONTINUED ON FOLLOWING PAGE)

SW-1, 17 APR 2025 to 15 MAY 2025

SW-1, 17 APR 2025 to 15 MAY 2025

LARKS THREE ARRIVAL

DENVER, COLORADO

ARRIVAL ROUTE DESCRIPTION

ALAMOSA TRANSITION (ALS.LARKS3): From over ALS VORTAC on ALS R-339 and FQF R-220 to LARKS. Thence. . . .

BLUE MESA TRANSITION (HBU.LARKS3): From over HBU VOR/DME on HBU R-053 and FQF R-220 to LARKS. Thence. . . .

LOPEC TRANSITION (LOPEC.LARKS3): From over LOPEC on RSK R-022 and FQF R-220 to LARKS. Thence. . . .

PUEBLO TRANSITION (PUB.LARKS3): From over PUB VORTAC on PUB R-267 to KANON, then on ALS R-339 and FQF R-220 to LARKS. Thence. . . .

RATTLESNAKE TRANSITION (RSK.LARKS3): From over RSK VORTAC on RSK R-022 and FQF R-220 to LARKS. Thence. . . .

. . . .from over LARKS on FQF R-220 to FALCON (FQF) VORTAC. Expect RADAR vectors to the final approach course at or before FALCON (FQF) VORTAC.

SW-1, 17 APR 2025 to 15 MAY 2025

SW-1, 17 APR 2025 to 15 MAY 2025