

(LAWGR.LAWGR3) 07OCT21

LAWGR THREE ARRIVAL (RNAV) Transition Routes

DENVER, COLORADO  
DENVER INTL (DEN)

DENVER APP CON

124.95 346.4

D-ATIS ARR

125.6 379.9

DENVER TOWER

128.75 273.55 (Rwy 7-25)

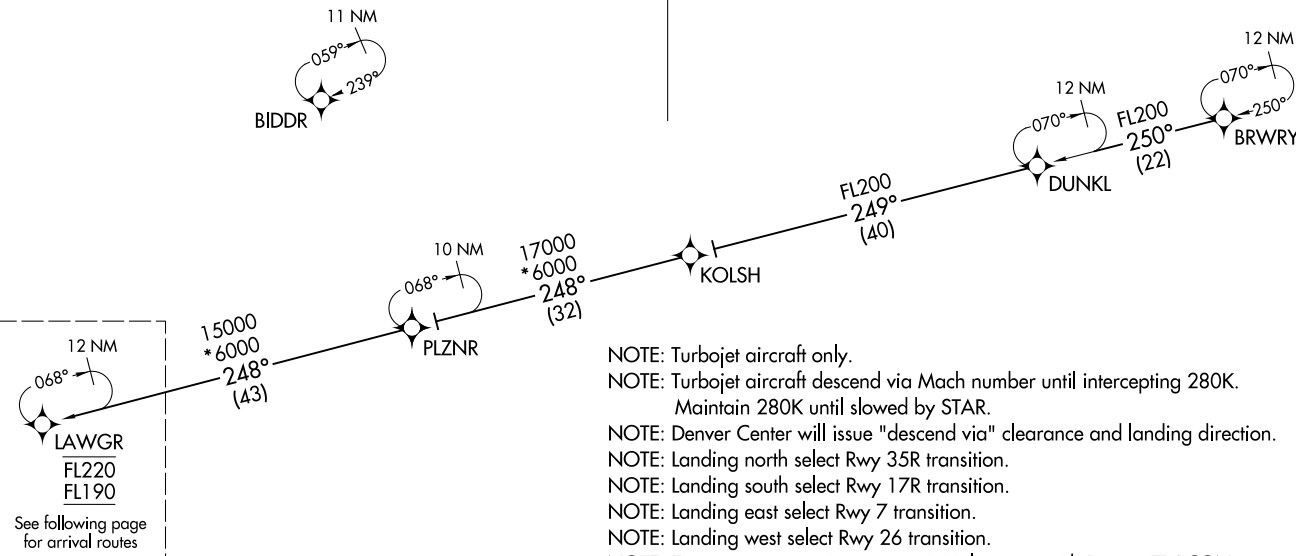
132.35 239.275 (Rwys 8-26, 17L-35R)

124.3 322.45 (Rwy 17R-35L)

135.3 351.95 (Rwys 16L-34R, 16R-34L)

RNAV 1 - DME/DME/IRU or GPS

RADAR required for non-GPS equipped aircraft



NOTE: Chart not to scale.

(CONTINUED ON FOLLOWING PAGE)

BRWRY TRANSITION (BRWRY.LAWGR3)(LAWGR.LAWGR3) 23110  
AL-9077 (FAA)  
LAWGR THREE ARRIVAL (RNAV) Transition RoutesDENVER INTL (DEN)  
DENVER, COLORADO

LAWGR THREE ARRIVAL (RNAV)  
(LAWGR.LAWGR3) 070CT21

Arrival Routes

DENVER, COLORADO  
DENVER INTL (DEN)

DENVER APP CON

124.95 346.4

D-ATIS ARR

125.6 379.9

DENVER TOWER

128.75 273.55 (Rwy 7-25)

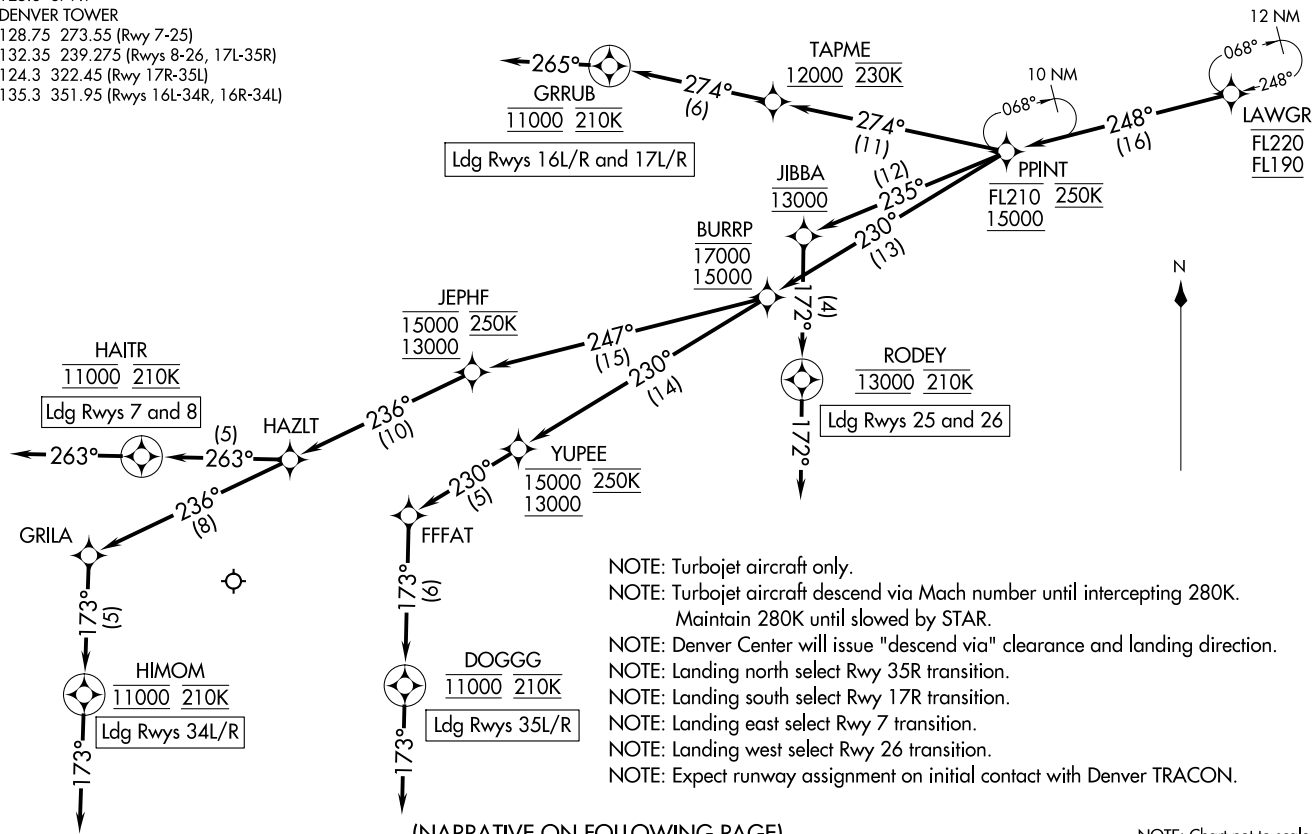
132.35 239.275 (Rwys 8-26, 17L-35R)

124.3 322.45 (Rwy 17R-35L)

135.3 351.95 (Rwys 16L-34R, 16R-34L)

RNAV 1 - DME/DME/IRU or GPS

RADAR required for non-GPS equipped aircraft



(NARRATIVE ON FOLLOWING PAGE)

NOTE: Chart not to scale.

LAWGR THREE ARRIVAL (RNAV)  
(LAWGR.LAWGR3) 23110AL-9077 (FAA)  
Arrival RoutesDENVER INTL (DEN)  
DENVER, COLORADO

ARRIVAL ROUTE DESCRIPTION

From LAWGR on track 248° to cross PPINT between 15000 and FL210 and at 250K.

LANDING RUNWAYS 7, 8: From PPINT on track 230° to cross BURRP between 15000 and 17000, then on track 247° to cross JEPHF between 13000 and 15000 and at 250K, then on track 236° to HAZLT, then on track 263° to cross HAITR at 11000 and at 210K, then on track 263°. Expect RADAR vectors to final approach course.

LANDING RUNWAYS 16L/R, 17L/R: From PPINT on track 274° to cross TAPME at or above 12000 and at 230K, then on track 274° to cross GRRUB at 11000 and at 210K, then on track 265°. Expect RADAR vectors to final approach course.

LANDING RUNWAYS 25, 26: From PPINT on track 235° to cross JIBBA at 13000, then on track 172° to cross RODEY at 13000 and at 210K, then on track 172°. Expect RADAR vectors to final approach course.

LANDING RUNWAYS 34L/R: From PPINT on track 230° to cross BURRP between 15000 and 17000, then on track 247° to cross JEPHF between 13000 and 15000 and at 250K, then on track 236° to HAZLT, then on track 236° to GRILA, then on track 173° to cross HIMOM at 11000 and at 210K, then on track 173°. Expect RADAR vectors to final approach course.

LANDING RUNWAYS 35L/R: From PPINT on track 230° to cross BURRP between 15000 and 17000, then on track 230° to cross YUPEE between 13000 and 15000 and at 250K, then on track 230° to FFFAT, then on track 173° to cross DOGGG at 11000 and at 210K, then on track 173°. Expect RADAR vectors to final approach course.

LOST COMMUNICATIONS: In the event of lost communications prior to runway transition assignment, when DEN is landing south, execute the ILS RWY 17R, when DEN is landing north, execute the ILS RWY 35R.

SW-1, 17 APR 2025 to 15 MAY 2025

SW-1, 17 APR 2025 to 15 MAY 2025