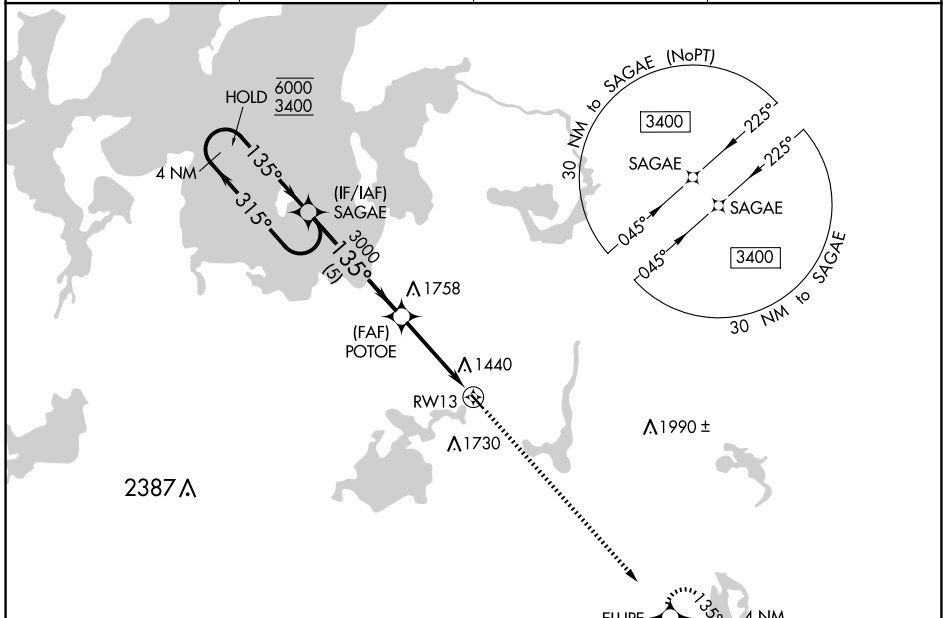


APP CRS 135°	Rwy Idg TDZE Apt Elev	3109 1337 1337
------------------------	-----------------------------	---

RNAV (GPS) RWY 13

LONGVILLE MUNI (XVG)

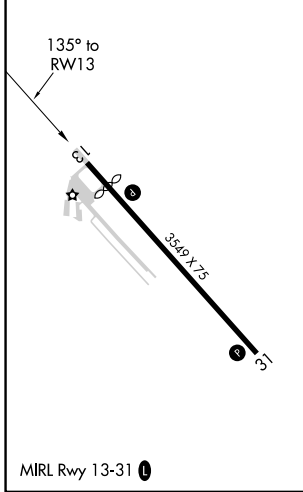
RNP APCH.		MISSED APPROACH: Climb to 3100 direct ELUPE and hold.	
<p>▼ Procedure NA at night.</p> <p>▲ Rwy 13 helicopter visibility reduction below 1 SM NA.</p>			
AWOS-3 118.275	MINNEAPOLIS CENTER 118.05 239.0	GCO 121.725	CTAF 122.90



NC-1, 17 APR 2025 to 15 MAY 2025

NC-1, 17 APR 2025 to 15 MAY 2025

ELEV 1337	D	TDZE 1337
-----------	----------	-----------



VGSI and descent angles not coincident (VGSI Angle 4.00/TCH 19).

4 NM Holding Pattern	SAGAE	POTOE	RWY 13	3100 ELUPE
6000 ← 315°	← 135° →	135°	4.00° TCH 30	↑
3400		3000		✧
		5 NM	3.9 NM	

CATEGORY	A	B	C	D
LNAV MDA	1820-1	483 (500-1)	NA	
C CIRCLING	1860-1 523 (600-1)	2080-1 743 (800-1)	NA	