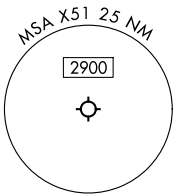
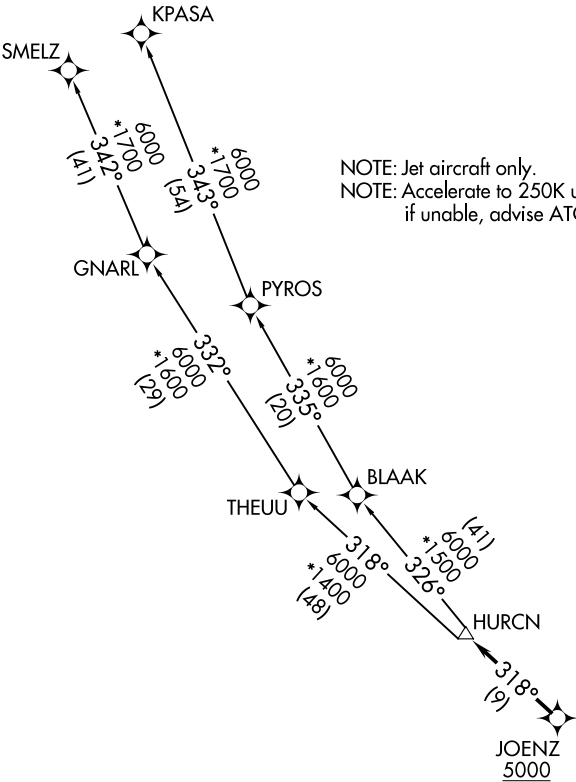
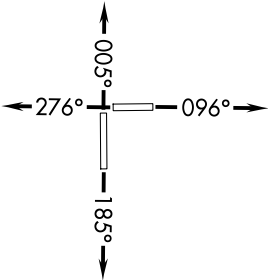


RNAV-1 DME/DME/IRU or GPS.	TOP ALTITUDE: ASSIGNED BY ATC	MIAMI DEP CON 125.5 354.1 AWOS-3 118.375 CTAF 122.8
RADAR required.		



TAKEOFF MINIMUMS

- Rwy 10: Standard with minimum climb of 500'/NM to 2400.
- Rwy 18: Standard with minimum climb of 500'/NM to 1800.
- Rwy 28: Standard with minimum climb of 500'/NM to 1900.
- Rwy 36: Standard with minimum climb of 500'/NM to 2200.



NOTE: Chart not to scale.

(CONTINUED ON FOLLOWING PAGE)



DEPARTURE ROUTE DESCRIPTION

- TAKEOFF RUNWAY 10:

Climb on heading 096° or as assigned by ATC for RADAR vectors to cross JOENZ at or above 5000, thence. . .
- TAKEOFF RUNWAY 18:

Climb on heading 185° or as assigned by ATC for RADAR vectors to cross JOENZ at or above 5000, thence. . .
- TAKEOFF RUNWAY 28:

Climb on heading 276° or as assigned by ATC for RADAR vectors to cross JOENZ at or above 5000, thence. . .
- TAKEOFF RUNWAY 36:

Climb on heading 005° or as assigned by ATC for RADAR vectors to cross JOENZ at or above 5000, thence. . .

. . .on track 318° to HURCN, then on transition. Maintain ATC assigned altitude. Expect clearance to filed altitude within 10 minutes after departure.

KPASA TRANSITION (HURCN4.KPASA)

SMELZ TRANSITION (HURCN4.SMELZ)

SE-3, 17 APR 2025 to 15 MAY 2025

SE-3, 17 APR 2025 to 15 MAY 2025