

APP CRS 343°	Rwy Idg TDZE Apt Elev	N/A N/A 35
------------------------	-----------------------------	---------------------------------------

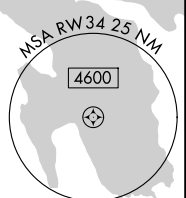
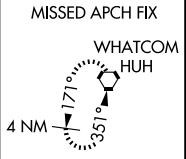
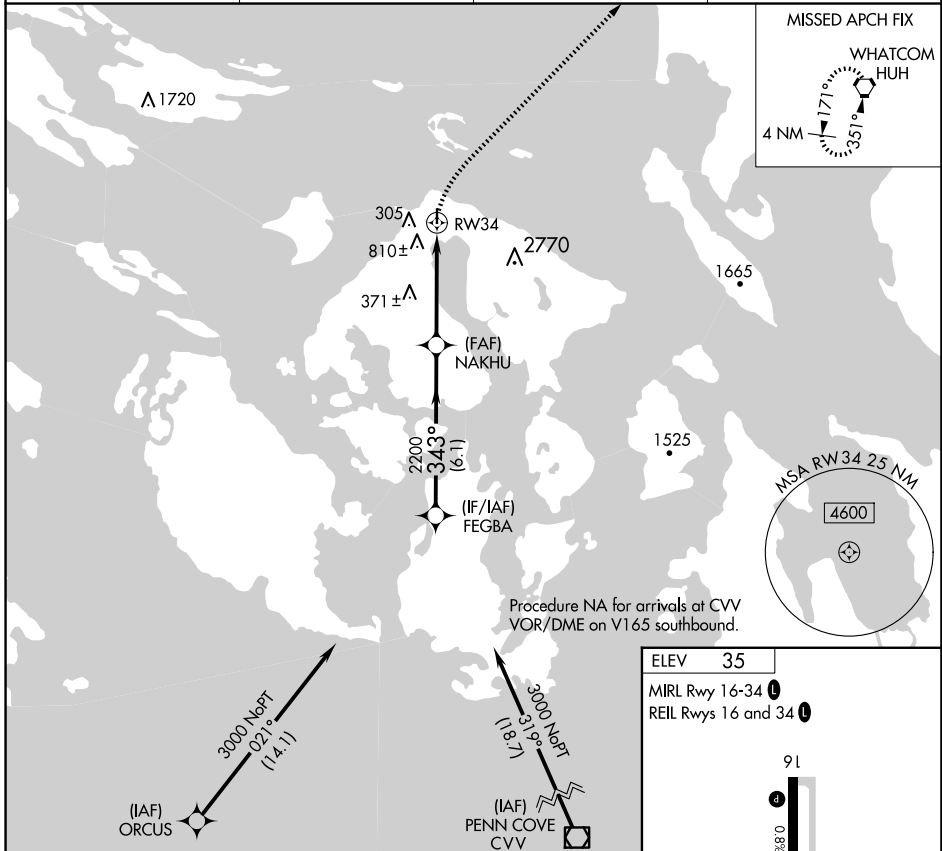
RNAV (GPS)-A

ORCAS ISLAND (ORS)

▼ DME/DME RNP-0.3 NA. Helicopter visibility reduction below 1 SM NA.
▲ When local altimeter setting not received, use Friday Harbor altimeter setting and increase MDA 40 feet. Night landing: Rwy 34 NA.

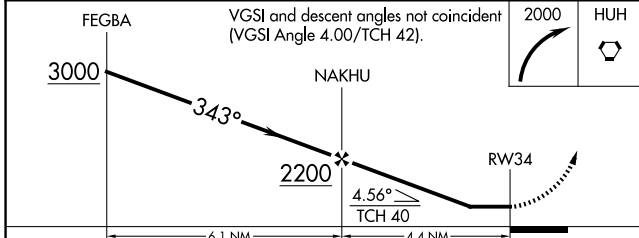
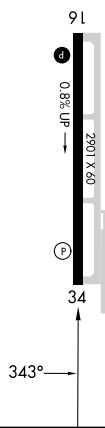
MISSED APPROACH: Climbing right turn to 2000 direct HUH VORTAC and hold.

AWOS-3P 135.425	WHIDBEY APP CON 118.2 285.65 (SOUTH)	VICTORIA APP CON 132.7 290.8 (NORTH)	CTAF 128.25 0
---------------------------	--	--	-------------------------



Procedure NA for arrivals at CVV
 VOR/DME on V165 southbound.

ELEV	35
MIRL Rwy 16-34	0
REIL Rwy 16 and 34	0



CATEGORY	A	B	C	D
C CIRCLING	1120-1¼ 1085 (1100-1¼)	1820-1½ 1785 (1800-1½)	NA	

NW-1, 17 APR 2025 to 15 MAY 2025

NW-1, 17 APR 2025 to 15 MAY 2025