

APP CRS	Rwy Idg	<b>8500</b>
<b>270°</b>	TDZE	<b>142</b>
	Apt Elev	<b>142</b>

# RNAV (GPS) Y RWY 28

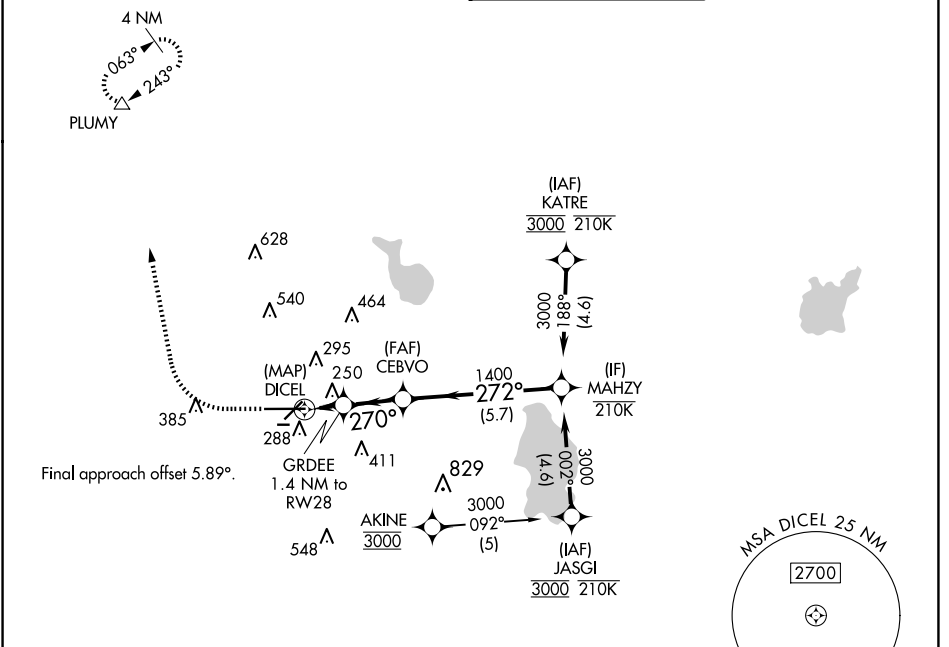
LAKELAND LINDER INTL (LAL)

RNP APCH - GPS.

**⚠** Circling Rwy 08, 26 NA. For uncompensated Baro-VNAV systems, LNAV/VNAV NA below -15°C or above 54°C. Rwy 28 helicopter visibility reduction below RVR 4000 NA.

**⚠** MISSED APPROACH: Climb to 600 then climbing right turn to 2000 direct PLUMY and hold.

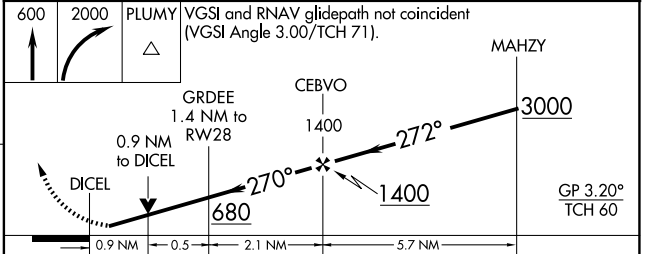
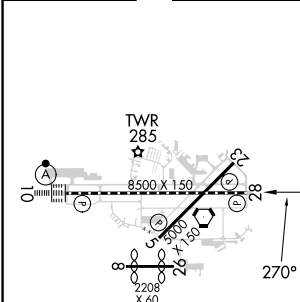
ATIS <b>118.025</b>	TAMPA APP CON <b>120.65 290.3</b>	LAKELAND TOWER <b>124.5 236.775</b>	GND CON <b>121.4</b>
------------------------	--------------------------------------	--	-------------------------



SE-3, 15 MAY 2025 to 12 JUN 2025

SE-3, 15 MAY 2025 to 12 JUN 2025

ELEV 142	<b>D</b>	TDZE 142
----------	----------	----------



CATEGORY	A	B	C	D
LNAV/VNAV DA		455/45	313 (400-7%)	
LNAV MDA		500/55	358 (400-1)	
CIRCLING	600-1	458 (500-1)	720-1½ 578 (600-1½)	840-2¼ 698 (700-2¼)

LAKELAND, FLORIDA  
Orig 03OCT24

27°59'N-82°01'W

# LAKELAND LINDER INTL (LAL)

## RNAV (GPS) Y RWY 28