

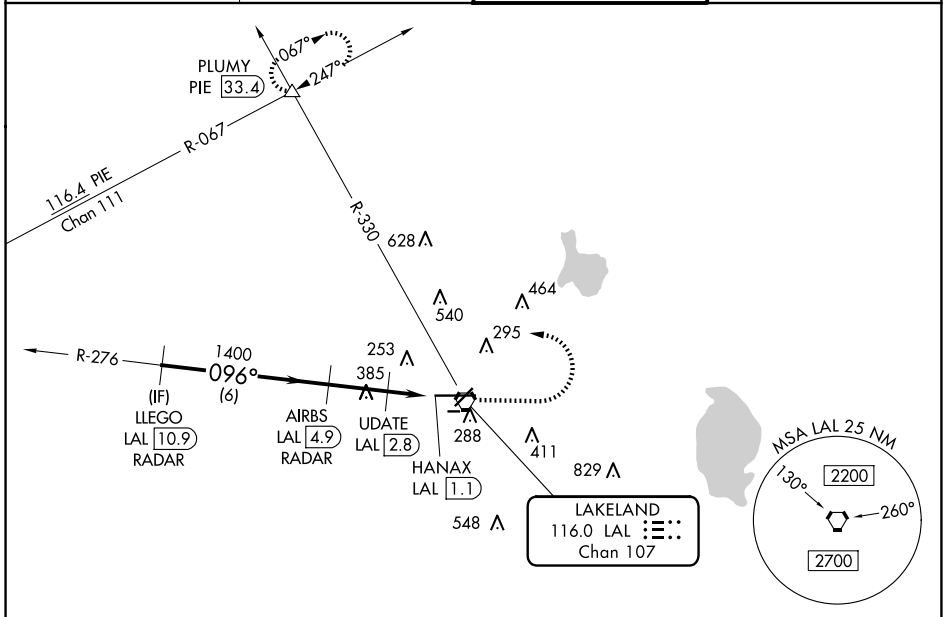
VORTAC LAL 116.0 Chan 107	APP CRS 096°	Rwy Idg 8500 TDZE 132 Apt Elev 142
---	------------------------	---

VOR RWY 10

LAKELAND LINDER INTL (LAL)

RADAR required for procedure entry. DME or RADAR required.		ALSF-2 	MISSED APPROACH: Climb to 1000 then climbing left turn to 2000 on heading 294° and on LAL VORTAC R-330 to PLUMY INT/ PIE 33.4 DME and hold.
<p> Circling NA to Rwys 8 and 26. Circling Rwy 28 NA at night. For inop ALS, increase S-10 Cat C/D visibility to 1 1/2 SM; increase UDATE fix minimums S-10 Cat C/D visibility to RVR 6000.</p>			

ATIS 118.025	TAMPA APP CON 120.65 290.3	LAKELAND TOWER 124.5 236.775	GND CON 121.4
------------------------	--------------------------------------	--	-------------------------



SE-3, 15 MAY 2025 to 12 JUN 2025

SE-3, 15 MAY 2025 to 12 JUN 2025

ELEV 142		D TDZE 132				
<p> <p>TWR 285 8500 X 150 5000 X 150 2208 X 60</p> </p>						
CATEGORY	A	B	C	D		
S-10	700/24	568 (600-1/2)	700-1 1/4	568 (600-1 1/4)		
CIRCLING	700-1	558 (600-1)	720-1 1/2 578 (600-1 1/2)	840-2 1/4 698 (700-2 1/4)		
UPDATE FIX MINIMUMS						
S-10	540/24	408 (400-1/2)	540/40	408 (400-3/4)		
CIRCLING	600-1 458 (500-1)	660-1 518 (600-1)	720-1 1/2 578 (600-1 1/2)	840-2 1/4 698 (700-2 1/4)		
TDZ/CL Rwy 10				HIRL Rwys 5-23 and 10-28		
FAF to MAP 3.8 NM						
Knots		60	90	120	150	180
Min:Seq		3:48	2:32	1:54	1:31	1:16