

CLEVELAND, OHIO



CLEVELAND APP CON  
126.55 346.325  
BKL ATIS  
125.25  
CAK ATIS  
121.05  
CLE D-ATIS  
127.85

(BRWNZ. BRWNZ4) 23110 AL-84 (FAA)  
**BRWNZ FOUR ARRIVAL** (RNAV) Arrival Routes

AL-84 (FAA)

CLEVELAND, OHIO

 LAKE COUNTY  
EXEC

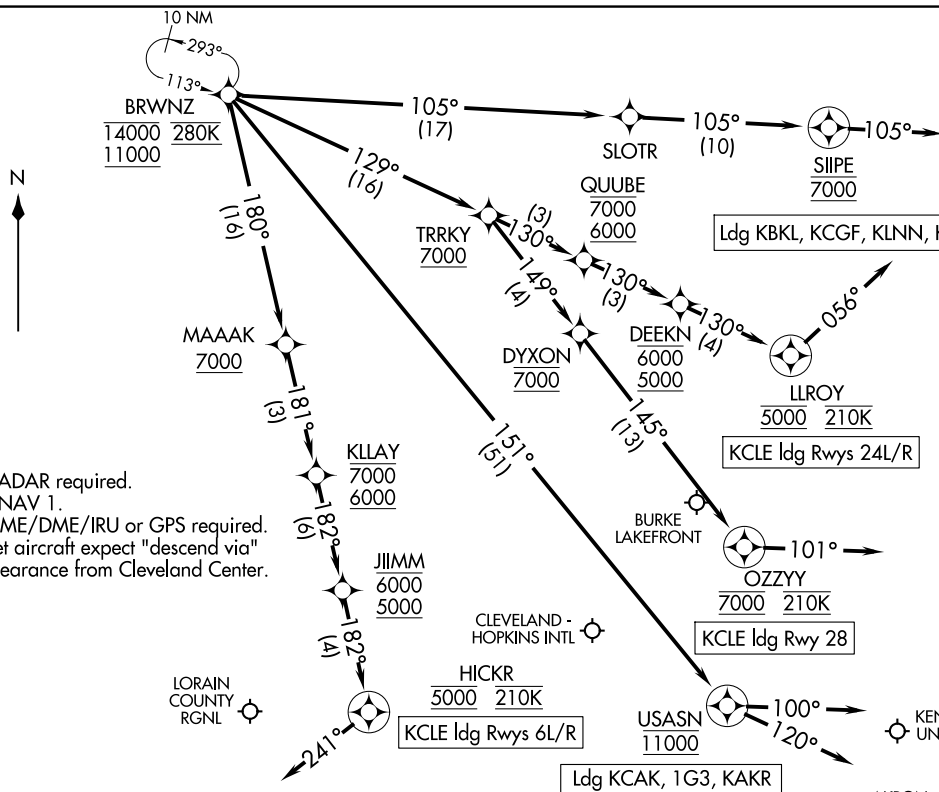
 CUYAHOGA  
COUNTY

 KENT STATE  
UNIVERSITY

AKRON  
FULTON  
INTL

AKRON-  
CANTON  
RGNL

NOTE: Chart not to scale.



NOTE: RADAR required.  
NOTE: RNAV 1.  
NOTE: DME/DME/IRU or GPS required.  
NOTE: Jet aircraft expect "descend via"  
clearance from Cleveland Center.

NOTE: KCLE LANDING SOUTH: Use Rwy 24R Transition, expect runway assignment from CLEVELAND APP CON no later than 10 NM from BRWNZ.  
NOTE: KCLE LANDING NORTH: Use Rwy 6L Transition, expect runway assignment from CLEVELAND APP CON no later than 10 NM from BRWNZ.

(NARRATIVE ON FOLLOWING PAGE)

## BROWNZ FOUR ARRIVAL (RNAV) Arrival Routes

CLEVELAND, OHIO

(BRWNZ.BRWNZ4) 22APR21

ARRIVAL ROUTE DESCRIPTION

LANDING KCLE RUNWAYS 6L/R: From BRWNZ on track 180° to cross MAAAK at or above 7000, then on track 181° to cross KLLAY between 6000 and 7000, then on track 182° to cross JIIMM between 5000 and 6000, then on track 182° to cross HICKR at 5000 and at 210K, then on heading 241° or as assigned by ATC. Expect ILS, RNAV (RNP), or RNAV (GPS) approach from HICKR, or RADAR vectors to final approach course.

LANDING KCLE RUNWAYS 24L/R: From BRWNZ on track 129° to cross TRRKY at or above 7000, then on track 130° to cross QUUBE between 6000 and 7000, then on track 130° to cross DEEKN between 5000 and 6000, then on track 130° to cross LLROY at 5000 and at 210K, then on heading 056° or as assigned by ATC. Expect ILS, RNAV (RNP), or RNAV (GPS) approach from LLROY, or RADAR vectors to final approach course.

LANDING KCLE RUNWAY 28: From BRWNZ on track 129° to cross TRRKY at or above 7000, then on track 149° to cross DYXON at 7000, then on track 145° to cross OZZYY at 7000 and at 210K, then on heading 101° or as assigned by ATC. Expect RADAR vectors to final approach course.

LANDING 1G3/KAKR: From BRWNZ on track 151° to cross USASN at 11000, then on track 100°. Expect RADAR vectors to final approach course.

LANDING KLPR/KLNN/KCGF/KBKL: From BRWNZ on track 105° to SLOTR, then on track 105° to cross SIPE at 7000, then on track 105°. Expect RADAR vectors to final approach course.

LANDING KCAK: From BRWNZ on track 151° to cross USASN at 11000, then on track 120°. Expect RADAR vectors to final approach course.

EC-2, 12 JUN 2025 to 10 JUL 2025

EC-2, 12 JUN 2025 to 10 JUL 2025