

RAYZZ THREE ARRIVAL (RNAV)  
(RAYZZ.RAYZZ3) 17APR25

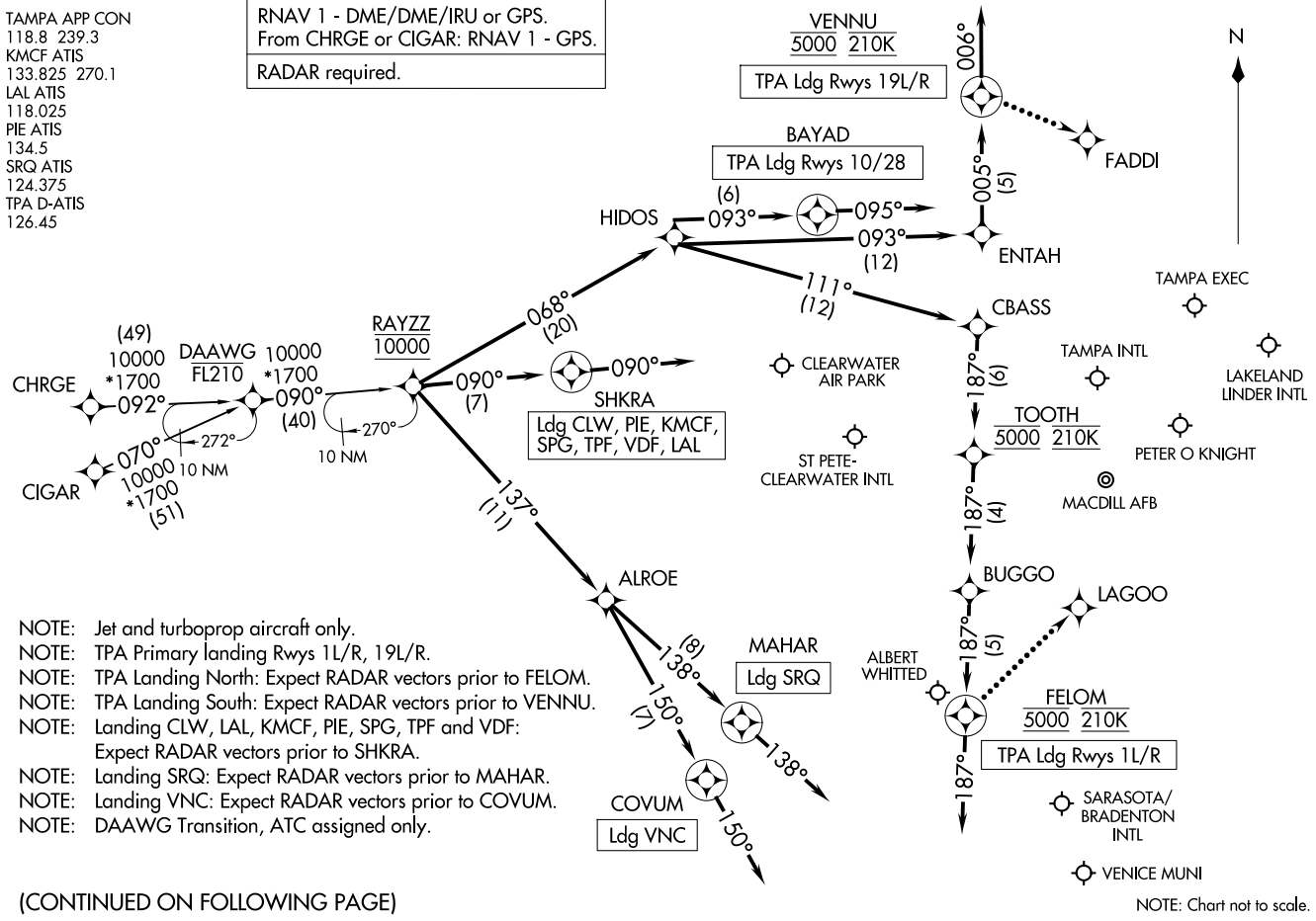
(RAYZZ.RAYZZ3) 25107  
RAYZZ THREE ARRIVAL (RNAV)

AL-416 (FAA)

TAMPA, FLORIDA

TAMPA APP CON  
118.8 239.3  
KMCF ATIS  
133.825 270.1  
LAL ATIS  
118.025  
PIE ATIS  
134.5  
SRQ ATIS  
124.375  
TPA D-ATIS  
126.45

RNAV 1 - DME/DME/IRU or GPS.  
From CHRGE or CIGAR: RNAV 1 - GPS.  
RADAR required.



- NOTE: Jet and turboprop aircraft only.
- NOTE: TPA Primary landing Rwy 11L/R, 19L/R.
- NOTE: TPA Landing North: Expect RADAR vectors prior to FELOM.
- NOTE: TPA Landing South: Expect RADAR vectors prior to VENNU.
- NOTE: Landing CLW, LAL, KMCF, PIE, SPG, TPF and VDF: Expect RADAR vectors prior to SHKRA.
- NOTE: Landing SRQ: Expect RADAR vectors prior to MAHAR.
- NOTE: Landing VNC: Expect RADAR vectors prior to COVUM.
- NOTE: DAAWG Transition, ATC assigned only.

(CONTINUED ON FOLLOWING PAGE)

NOTE: Chart not to scale.

TAMPA, FLORIDA

ARRIVAL ROUTE DESCRIPTION

CHRG TRANSITION (CHRG.RAYZZ3)

CIGAR TRANSITION (CIGAR.RAYZZ3)

DAAWG TRANSITION (DAAWG.RAYZZ3)

TPA: From RAYZZ on track 068° to HIDOS.

LANDING TPA RUNWAYS 1L/R: From HIDOS on track 111° to CBASS, then on track 187° to cross TOOTH at 5000 and at 210K, then on track 187° to BUGGO, then on track 187° to cross FELOM at 5000 and at 210K, then on track 187°. Expect RADAR vectors to final approach course.

LANDING TPA RUNWAYS 10, 28: From HIDOS on track 093° to BAYAD, then on heading 095°. Expect RADAR vectors to final approach course.

LANDING TPA RUNWAYS 19L/R: From HIDOS on track 093° to ENTAH, then on track 005° to cross VENNU at 5000 and at 210K, then on track 006°. Expect RADAR vectors to final approach course.

LANDING CLW/PIE/KMCF/SPG/TPF/VDF/LAL: From RAYZZ on track 090° to SHKRA, then on track 090°. Expect RADAR vectors to final approach course.

LANDING SRQ: From RAYZZ on track 137° to ALROE, then on track 138° to MAHAR, then on track 138°. Expect RADAR vectors to final approach course.

LANDING VNC: From RAYZZ on track 137° to ALROE, then on track 150° to COVUM, then on track 150°. Expect RADAR vectors to final approach course.

LOST COMMUNICATIONS

TPA LANDING NORTH: After FELOM, proceed to LAGOO, then proceed on the Rwy 1L approach.

TPA LANDING SOUTH: After VENNU, proceed to FADDI, then proceed on the Rwy 19R approach.

SE-3, 07 AUG 2025 to 04 SEP 2025

SE-3, 07 AUG 2025 to 04 SEP 2025