

APP CRS <b>276°</b>	Rwy Idg TDZE Apt Elev	<b>8500</b> <b>142</b> <b>142</b>
------------------------	-----------------------------	-----------------------------------------

# RNAV (RNP) Z RWY 28

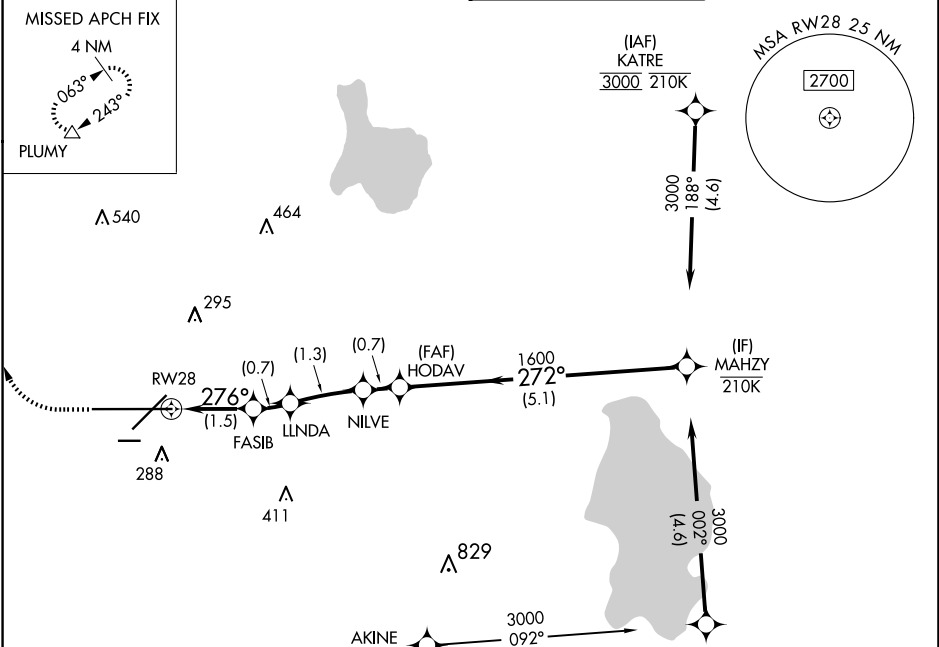
LAKELAND LINDER INTL (LAL)

RNP AR APCH - GPS.

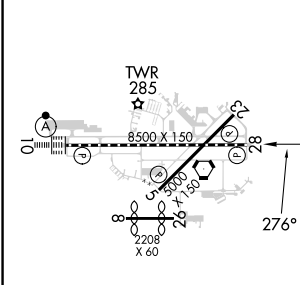
For uncompensated Baro-VNAV systems, procedure NA below -15°C or above 54°C.

MISSED APPROACH: Climb to 600 then climbing right turn to 2000 direct PLUMY and hold.

ATIS <b>118.025</b>	TAMPA APP CON <b>120.65 290.3</b>	LAKELAND TOWER <b>124.5 236.775</b>	GND CON <b>121.4</b>
------------------------	--------------------------------------	----------------------------------------	-------------------------

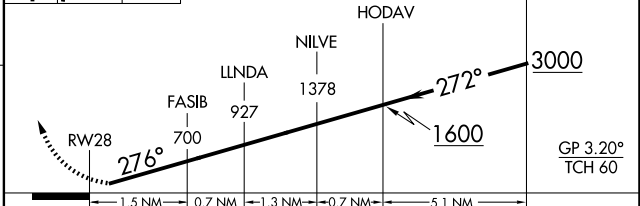


ELEV 142	<b>D</b>	TDZE 142
----------	----------	----------



600 2000 PLUMY

VGSI and RNAV glidepath not coincident (VGSI Angle 3.00/TCH 71).



CATEGORY	A	B	C	D
RNP 0.30 DA	507/55 365 (400-1)			

TDZ/CL Rwy 10  
HIRL Rwy 5-23 and 10-28

**AUTHORIZATION REQUIRED**

SE-3, 07 AUG 2025 to 04 SEP 2025

SE-3, 07 AUG 2025 to 04 SEP 2025