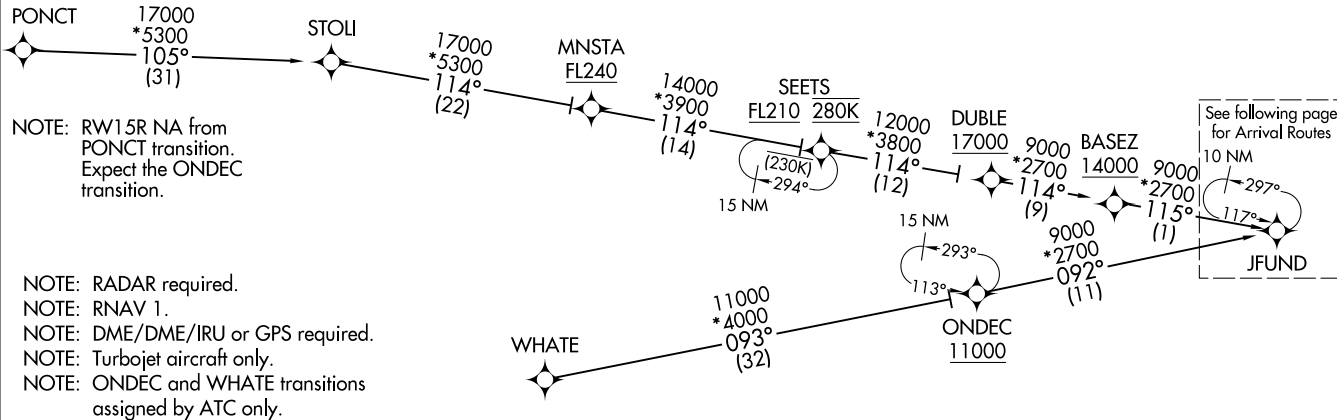


D-ATIS
 135.0
 BOSTON APP CON
 120.6 263.1



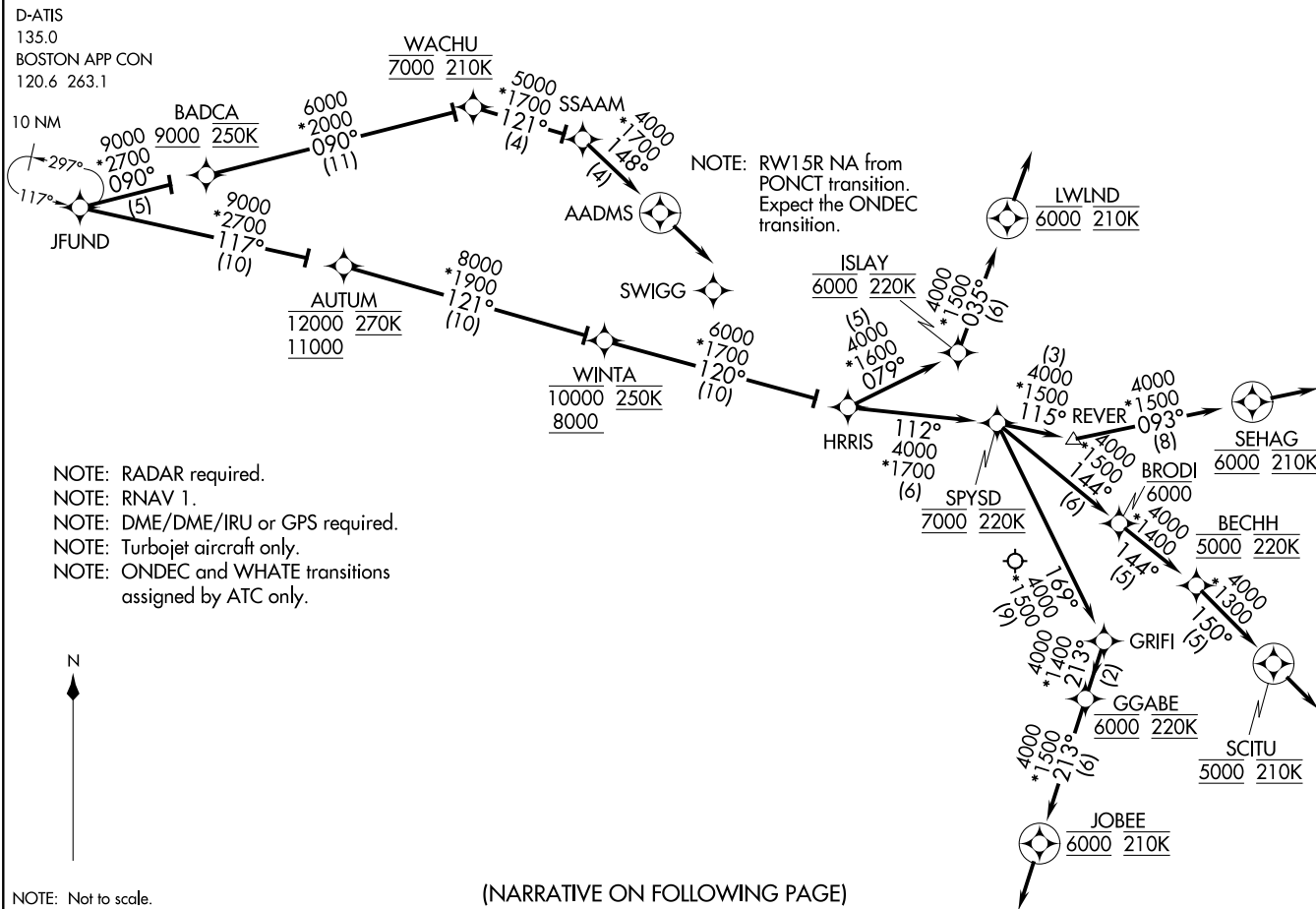
See following page
 for Arrival Routes

ONDEC TRANSITION (ONDEC.JFUND2):
 PONCT TRANSITION (PONCT.JFUND2)
 WHATE TRANSITION (WHATE.JFUND2):

(CONTINUED ON FOLLOWING PAGE)

NOTE: Not to scale.

GENERAL EDWARD LAWRENCE LOGAN INTL (BOS)	AL-58 (FAA)	Arrival Routes
(JFUND, JFUND2)	21056	JFUND TWO ARRIVAL (RNAV)



(NARRATIVE ON FOLLOWING PAGE)

NOTE: Not to scale.

JFUND1 TWO ARRIVAL(RNAV) Arrival Routes
 (JFUND.JFUND2) 12OCT17 BOSTON, MASSACHUSETTS
 GENERAL EDWARD LAWRENCE LOGAN INTL (BOS)

BOSTON, MASSACHUSETTS

ARRIVAL ROUTE DESCRIPTION

LANDING RUNWAY 4R/L: From JFUND on track 117° to cross AUTUM between 11000 and 12000 and at 270K, then on track 121° to cross WINTA between 8000 and 10000 and at 250K, then on track 120° to HRRIS, then on track 112° to cross SPYSD at 7000 and at 220K, then on track 170° to GRIFI, then on track 213° to cross GGABE at 6000 and at 220K, then on track 213° to cross JOBEE at 6000 and at 210K, then on track 213°. Expect RADAR vectors to final approach course.

LANDING RUNWAY 15R: From JFUND on track 090° to cross BADCA at or above 9000 and at 250K, then on track 090° to cross WACHU at 7000 and at 210K, then on track 121° to SSAAM, then on track 148° to AADMS, then on track 148°. Expect RADAR vectors to final approach course.

LANDING RWY 22R/L: From JFUND on track 117° to cross AUTUM between 11000 and 12000 and at 270K, then on track 121° to cross WINTA between 8000 and 10000 and at 250K, then on track 120° to HRRIS, then on track 079° to cross ISLAY at 6000 and at 220K, then on track 035° to cross LWLND at 6000 and at 210K, then on track 035°. Expect RADAR vectors to final approach course.

LANDING RUNWAY 27: From JFUND on track 117° to cross AUTUM between 11000 and 12000 and at 270K, then on track 121° to cross WINTA between 8000 and 10000 and at 250K, then on track 120° to HRRIS, then on track 112° to cross SPYSD at 7000 and at 220K, then on track 115° to REVER, then on track 093° to cross SEHAG at 6000 and at 210K, then on track 093°. Expect RADAR vectors to final approach course.

LANDING RUNWAYS 32, 33L: From JFUND on track 117° to cross AUTUM between 11000 and 12000 and at 270K, then on track 121° to cross WINTA between 8000 and 10000 and at 250K, then on track 120° to HRRIS, then on track 112° to cross SPYSD at 7000 and at 220K, then on track 144° to cross BRODI at or below 6000, then on track 144° to cross BECHH at 5000 and at 220K, then on track 150° to cross SCITU at 5000 and at 210K, then on track 150°. Expect RADAR vectors to final approach course.

NE-1, 27 NOV 2025 to 25 DEC 2025

NE-1, 27 NOV 2025 to 25 DEC 2025