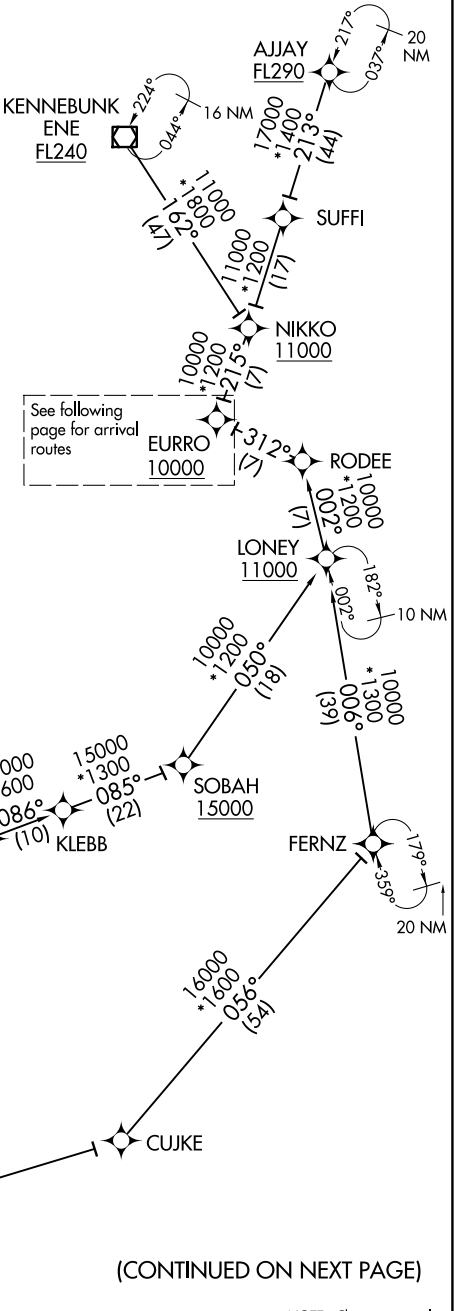


D-ATIS  
135.0  
BOSTON APP CON  
120.6 263.1

- NOTE: RADAR required.  
NOTE: RNAV 1.  
NOTE: DME/DME/IRU or GPS required.  
NOTE: Turbojet aircraft only.  
NOTE: FEXXX, MERIT, PROVI, RIFLE transitions assigned by ATC only.

- AJJAY TRANSITION (AJJAY.OOSH5)  
FERNZ TRANSITION (FERNZ.OOSH5)  
FEXXX TRANSITION (FEXXX.OOSH5)  
KENNEBUNK TRANSITION (ENE.OOSH5)  
MERIT TRANSITION (MERIT.OOSH5)  
PROVI TRANSITION (PROVI.OOSH5)  
RIFLE TRANSITION (RIFLE.OOSH5)



BOSTON, MASSACHUSETTS

D-ATIS  
135.0  
BOSTON APP CON  
120.6 263.1

LEEZI  
6000 210K

EURRO  
10000

ADDDA  
6000 220K

TKMAN  
5000 210K

HNOVR  
5000 220K

GRGIO  
9000

BRGIT  
7000

OOSHIN  
14000 9000 250K

RDHOK  
5000 210K

TTERI  
9000 250K

WAATR  
5000 210K

FLUTI  
9000

AYBEE  
6000 210K

PLGRM

KLANE

BECHH  
5000 220K

SCITU  
5000 210K

GGABE  
6000 220K

GRIFI

JOBEE  
6000 210K

NOTE: RADAR required.  
NOTE: RNAV 1.  
NOTE: DME/DME/IRU or GPS required.  
NOTE: Turbojet aircraft only.  
NOTE: FEXXX, MERIT, PROVI, RIFLE transitions assigned by ATC only.

NOTE: Chart not to scale

NOTE: RADAR required.  
NOTE: RNAV 1.  
NOTE: DME/DME/IRU or GPS required.  
NOTE: Turbojet aircraft only.  
NOTE: FEXXX, MERIT, PROVI, RIFLE transitions assigned by ATC only.

NOTE: Chart not to scale.

From EURRO on track 260° to cross OOSHN between 9000 and 14000 and at 250K.

Landing Rwy's 4L/R: From OOSHN on track 266° to cross TTER1 at or above 9000 and at 250K, then on track 268° to WAATR, then on track 240° to cross FLUT1 at or above 9000, then on track 215° to GRIF1, then on track 213° to cross GGABE at 6000 and at 220K, then on track 213° to cross JOBEE at 6000 and at 210K, then on track 213°. Expect RADAR vectors to final approach course.

Landing Rwy 15R: From OOSHN on track 282° cross GRGIO at or below 9000, then on track 269° to cross BRGIT at 7000, then on track 273° to cross HNOVR at 5000 and at 220K, then on track 271° to cross RDHOK at 5000 and at 210K, then on track 329° to cross TKMAN at 5000 and at 210K, then on track 329°. Expect RADAR vectors to final approach course.

Landing Rwys 22L/R: From OOSHN on track 282° to cross GRGIO at or below 9000, then on track 269° to cross BRGIT at 7000, then on track 323° to cross ADDDA at 6000 and at 220K, then on track 035° to cross LEEZI at 6000 and at 210K, then on track 035°. Expect RADAR vectors to final approach course.

Landing Rwy 27: From OOSHN on track 217° to PUDJJ, then on track 272° to cross AYBEE at 6000 and at 210K, then on track 272°. Expect RADAR vectors to final approach course.

Landing Rwy's 32, 33L: From OOSH on track 266° to cross TTERI at or above 9000 at 250K, then on track 268° to WAATR, then on track 213° to PLGRM, then on track 181° to cross BECHH at 5000 and at 220K, then on track 150° to cross SCITU at 5000 and at 210K, then on track 150°. Expect RADAR vectors to final approach course.