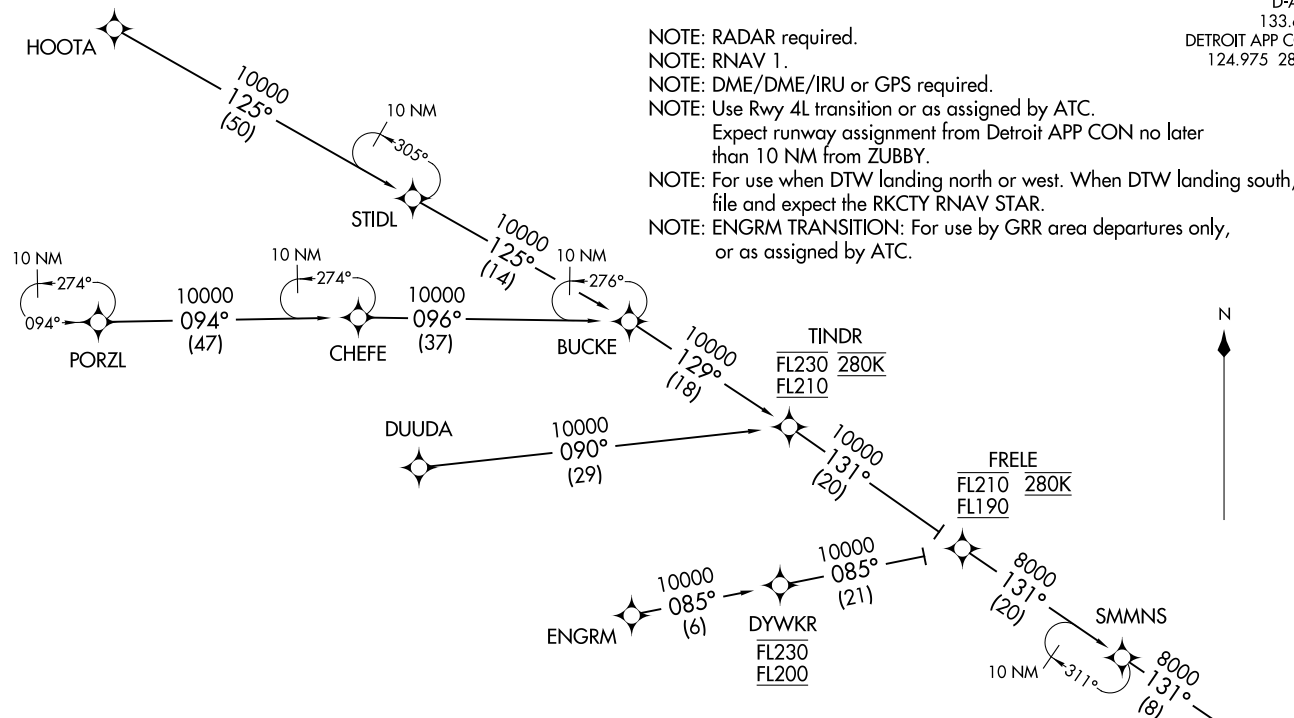


**KKISS TWO ARRIVAL (RNAV) Transition Routes**  
(RKCTY, KKISS2) 100CT19

DETROIT, MICHIGAN  
DETROIT METRO WAYNE COUNTY (DTW)



DUUDA TRANSITION (DUUDA.KKISS2)  
ENGRM TRANSITION (ENGRM.KKISS2)  
HOOTA TRANSITION (HOOTA.KKISS2)  
PORZL TRANSITION (PORZL.KKISS2)

(NARRATIVE ON FOLLOWING PAGE)  
(CONTINUED ON FOLLOWING PAGE)

NOTE: RADAR required.  
NOTE: RNAV 1.  
NOTE: DME/DME/IRU or GPS required.  
NOTE: Use Rwy 4L transition or as assigned by ATC.  
Expect runway assignment from Detroit APP CON no later than 10 NM from ZUBBY.  
NOTE: For use when DTW landing north or west. When DTW landing south, file and expect the RKCTY RNAV STAR.  
NOTE: ENGRM TRANSITION: For use by GRR area departures only, or as assigned by ATC.

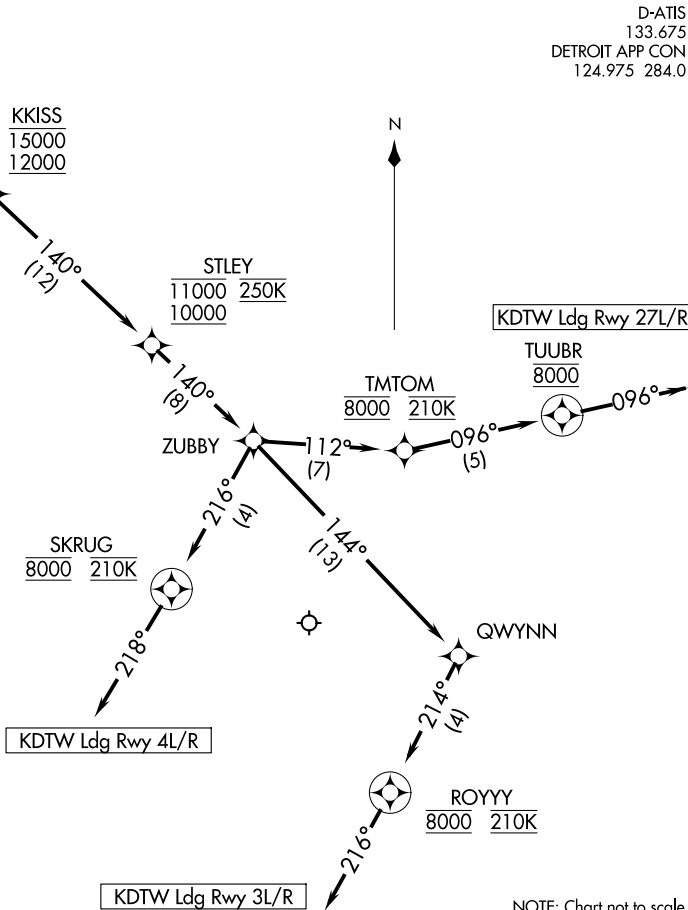
D-ATIS  
133.675  
DETROIT APP CON  
124.975 284.0

NOTE: Chart not to scale.

See following  
page for  
arrival route

(RKCTY, KKISS2) 21112  
**KKISS TWO ARRIVAL (RNAV) Transition Routes**  
DETROIT METRO WAYNE COUNTY (DTW)  
AL-119 (FAA)  
DETROIT, MICHIGAN

D-ATIS  
133.675  
DETROIT APP CON  
124.975 284.0



- NOTE: RADAR required.  
NOTE: RNAV 1.  
NOTE: DME/DME/IRU or GPS required.  
NOTE: Use Rwy 4L transition or as assigned by ATC.  
Expect runway assignment from Detroit APP CON  
no later than 10 NM from ZUBBY.  
NOTE: For use when DTW landing north or west. When DTW  
landing south, file and expect the RKCTY RNAV STAR.  
NOTE: ENGRM TRANSITION: For use by GRR area departures only,  
or as assigned by ATC.

### ARRIVAL ROUTE DESCRIPTION

From RKCTY on track 141° to cross KKISS between 12000 and 15000, then on track 140° to cross STLEY between 10000 and 11000 and at 250K, then on track 140° to ZUBBY.

LANDING RWY 3L/R: From ZUBBY on track 144° to QWYNN, then on track 214° to cross ROYYY at 8000 and at 210K, then on track 216°. Expect RADAR vectors to final approach course.

LANDING RWY 4L/R: From ZUBBY on track 216° to cross SKRUG at 8000 and at 210K, then on track 218°. Expect RADAR vectors to final approach course.

LANDING RWY 27L/R: From ZUBBY on track 112° to cross TMTOM at 8000 and at 210K, then on track 096° to cross TUUBR at 8000, then on track 096°. Expect RADAR vectors to final approach course.