

TOP ALTITUDE:
17000

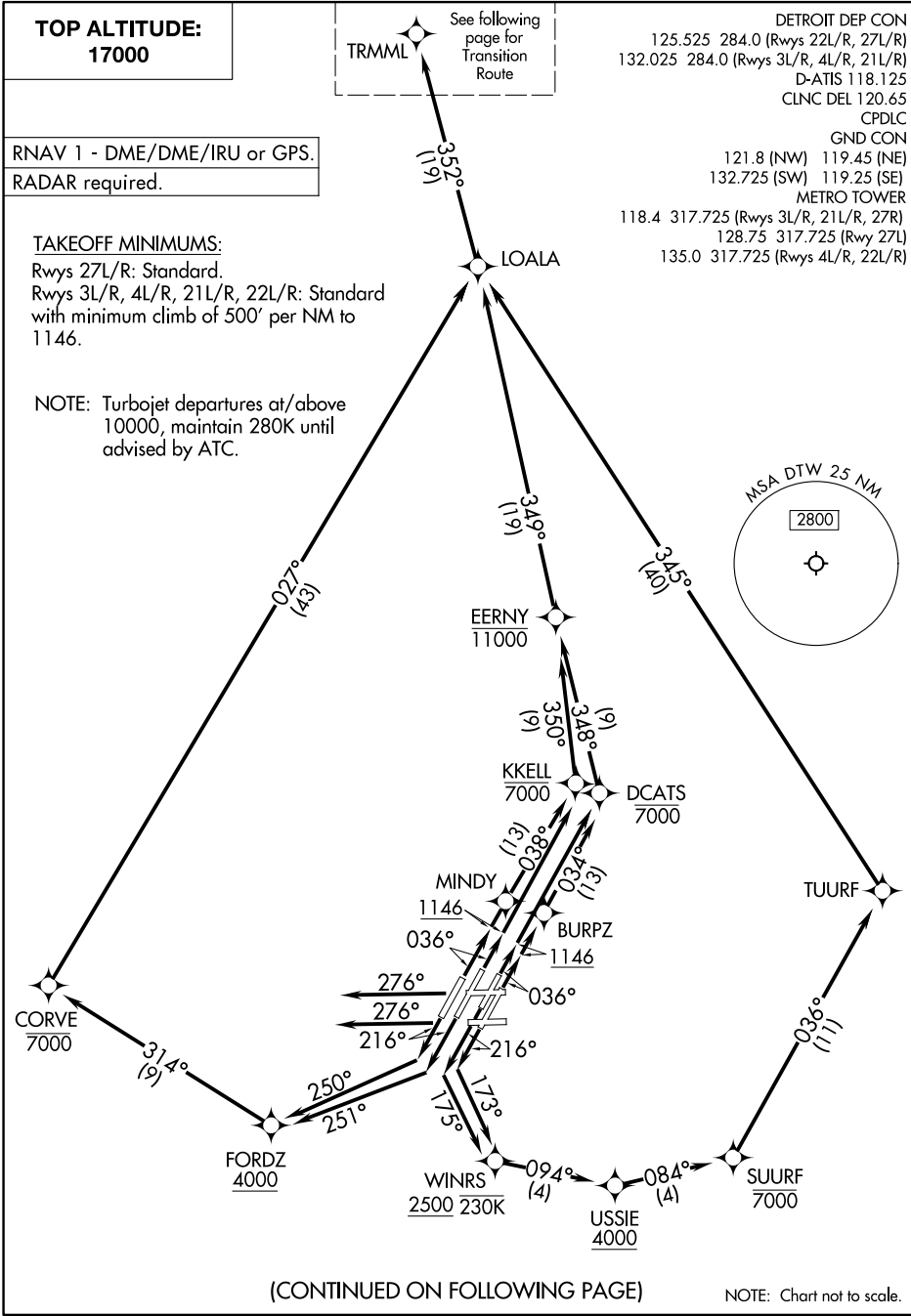
RNAV 1 - DME/DME/IRU or GPS.

RADAR required.

TAKEOFF MINIMUMS:

Rwys 27L/R: Standard.
Rwys 3L/R, 4L/R, 21L/R, 22L/R: Standard
with minimum climb of 500' per NM to 1146.

NOTE: Turbojet departures at/above 10000, maintain 280K until advised by ATC.



(CONTINUED ON FOLLOWING PAGE)

NOTE: Chart not to scale.

