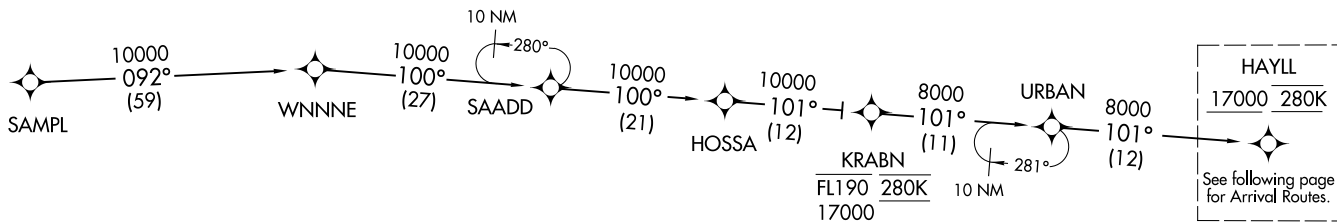


(HAYLL.VCTRZ2) 21112
 VCTRZ TWO ARRIVAL (RNAV) Transition Routes
 (HAYLL.VCTRZ2) 100CT19
 DETROIT, MICHIGAN
 DETROIT METRO WAYNE COUNTY (DTW)

D-ATIS
 133.675
 DETROIT APP CON
 124.975 284.0



- NOTE: RADAR required.
 NOTE: RNAV 1.
 NOTE: DME/DME/IRU or GPS required.
 NOTE: Use Runway 22R transition or as assigned by ATC.
 Expect runway assignment from Detroit APP CON
 no later than 10 NM from UUOFM.
 NOTE: For use when DTW landing south or west. When DTW landing north,
 file and expect the HAYLL RNAV STAR.
 NOTE: For use by flights departing KMDW, KSBM, KAZO, KMCI, KLAS, KLAX,
 KPHX, KSAN, AND KSNA area airports only, or as assigned by ATC.



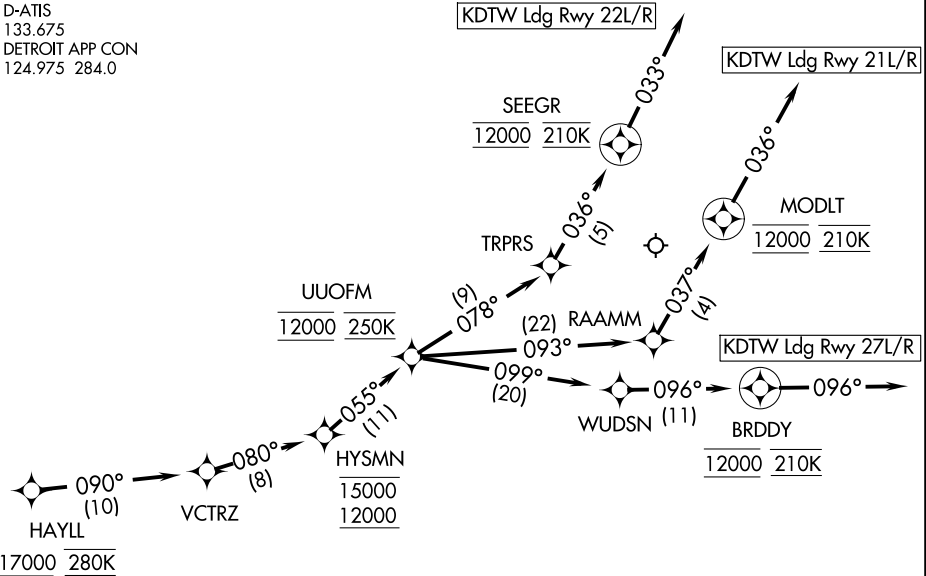
HOSSA TRANSITION (HOSSA.VCTRZ2)
 SAMPL TRANSITION (SAMPL.VCTRZ2)

(CONTINUED ON FOLLOWING PAGE)

NOTE: Chart not to scale.

(HAYLL.VCTRZ2) 21112
 VCTRZ TWO ARRIVAL (RNAV) Transition Routes
 AL-119 (FAA)
 DETROIT METRO WAYNE COUNTY (DTW)
 DETROIT, MICHIGAN

D-ATIS
133.675
DETROIT APP CON
124.975 284.0



- NOTE: RADAR required.
- NOTE: RNAV 1.
- NOTE: DME/DME/IRU or GPS required.
- NOTE: Use Runway 22R transition or as assigned by ATC.
Expect runway assignment from Detroit APP CON
no later than 10 NM from UUOFM.
- NOTE: For use when DTW landing south or west. When DTW landing north,
file and expect the HAYLL RNAV STAR.
- NOTE: For use by flights departing KMDW, KSBN, KAZO, KMCI, KLAS, KLAX,
KPHX, KSAN, AND KSNA area airports only, or as assigned by ATC.

NOTE: Chart not to scale.

ARRIVAL ROUTE DESCRIPTION

From HAYLL on track 090° to VCTRZ, then on track 080° to cross HYSMN between 12000 and 15000, then on track 055° to cross UUOFM at 12000 and at 250K.

LANDING RUNWAY 21L/R: From UUOFM on track 093° to RAAMM, then on track 037° to cross MODLT at 12000 and at 210K, then on track 036°. Expect RADAR vectors to final approach course.

LANDING RUNWAY 22L/R: From UUOFM on track 078° to TRPRS, then on track 036° to cross SEEGR at 12000 and at 210K, then on track 033°. Expect RADAR vectors to final approach course.

LANDING RUNWAY 27L/R: From UUOFM on track 099° to WUDSN, then on track 096° to cross BRDDY at 12000 and at 210K, then on track 096°. Expect RADAR vectors to final approach course.