

## COASTAL NINE DEPARTURE

ATIS 126.45  
GND CON  
121.6  
BRAINARD TOWER ★  
119.6 (CTAF) 248.2  
BRADLEY DEP CON  
127.8 269.325

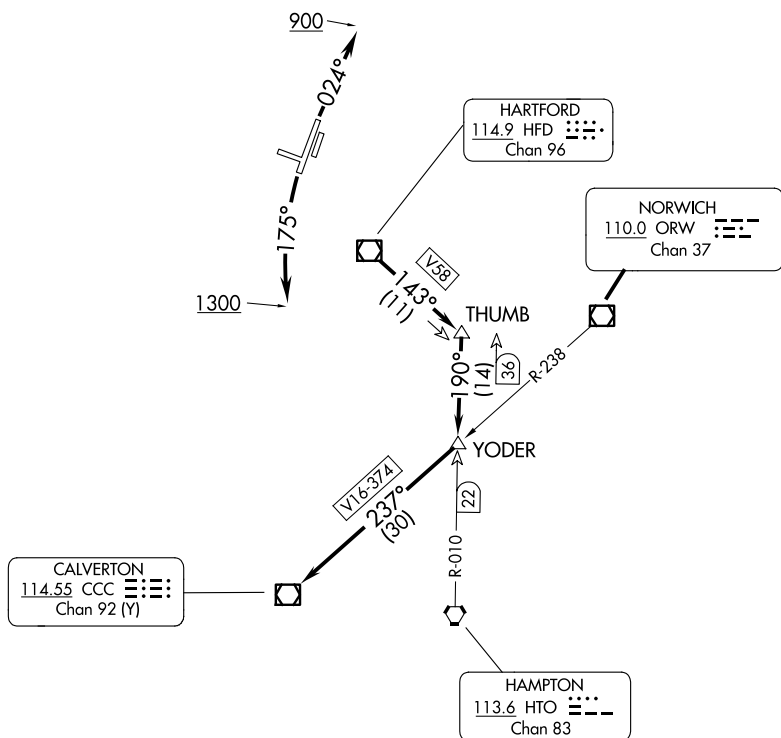
**TOP ALTITUDE:**  
3000

TAKEOFF MINIMUMS:

Rwys 11, 29: NA-Environmental.

Rwy 2: Standard.

Rwy 20: 200-1 $\frac{3}{8}$  or standard with minimum climb of 220' per NM to 300, or alternatively, with standard takeoff minimums and a normal 200' per NM climb gradient, takeoff must occur no later than 1500' prior to DER.



NOTE: RADAR required.

NOTE: Initial departure headings are predicated on avoiding noise sensitive areas, flight crew awareness and compliance is important in minimizing noise impacts on surrounding communities.

(CONTINUED ON FOLLOWING PAGE)

NOTE: Chart not to scale.



DEPARTURE ROUTE DESCRIPTION

TAKEOFF RUNWAY 2: Climb on heading 024° to 900, then as assigned for RADAR vectors to HFD VOR/DME, thence....

TAKEOFF RUNWAY 20: Climbing left turn heading 175° to 1300, then as assigned for RADAR vectors to HFD VOR/DME, thence....

....from over HFD VOR/DME proceed on HFD VOR/DME R-143 to THUMB INT, then on HTO VOR/DME R-010 to YODER INT, then on CCC VOR/DME R-057 to CCC VOR/DME, then on assigned route. Maintain 3000 or assigned altitude. Expect clearance to requested flight level 10 minutes after departure.

NE-1, 27 NOV 2025 to 25 DEC 2025

NE-1, 27 NOV 2025 to 25 DEC 2025