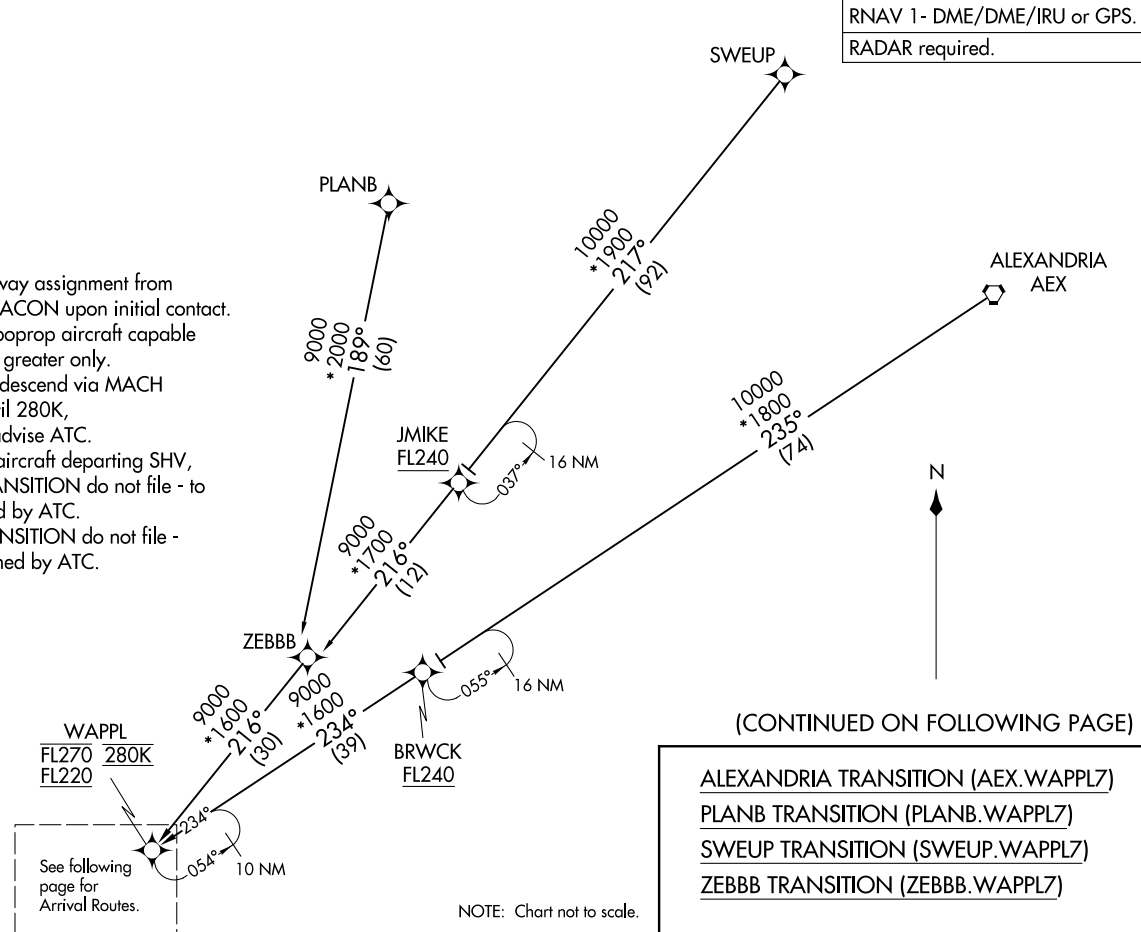


HOUSTON APP CON  
120.05 379.1  
EFD ATIS  
135.575 269.9  
HOU D-ATIS  
124.6  
SGR ATIS  
118.125  
TME ATIS  
119.525

- NOTE: Expect runway assignment from Houston TRACON upon initial contact.
- NOTE: Jet and turboprop aircraft capable of 280K or greater only.
- NOTE: Jet aircraft descend via MACH number until 280K, if unable, advise ATC.
- NOTE: Except for aircraft departing SHV, PLANB TRANSITION do not file - to be assigned by ATC.
- NOTE: ZEBBB TRANSITION do not file - to be assigned by ATC.



(CONTINUED ON FOLLOWING PAGE)

ALEXANDRIA TRANSITION (AEX.WAPPL7)  
PLANB TRANSITION (PLANB.WAPPL7)  
SWEUP TRANSITION (SWEUP.WAPPL7)  
ZEBBB TRANSITION (ZEBBB.WAPPL7)

WAPPL SEVEN ARRIVAL (RNAV)  
(WAPPL.WAPPL7) 12JUN25

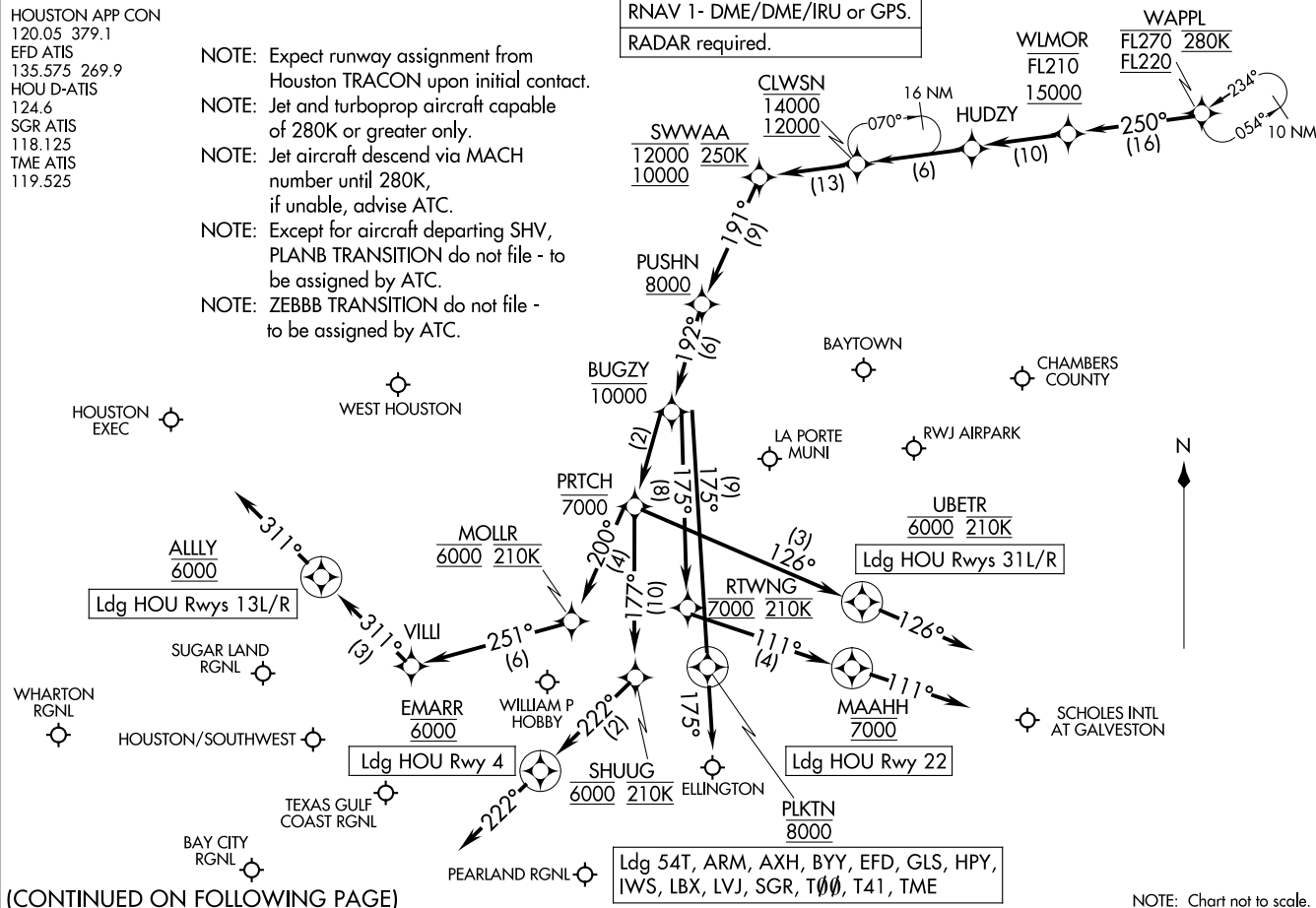
Arrival Routes

HOUSTON, TEXAS

HOUSTON APP CON  
120.05 379.1  
EFD ATIS  
135.575 269.9  
HOU D-ATIS  
124.6  
SGR ATIS  
118.125  
TME ATIS  
119.525

- NOTE: Expect runway assignment from Houston TRACON upon initial contact.
- NOTE: Jet and turboprop aircraft capable of 280K or greater only.
- NOTE: Jet aircraft descend via MACH number until 280K, if unable, advise ATC.
- NOTE: Except for aircraft departing SHV, PLANB TRANSITION do not file - to be assigned by ATC.
- NOTE: ZEBBB TRANSITION do not file - to be assigned by ATC.

RNAV 1- DME/DME/IRU or GPS.  
RADAR required.



(CONTINUED ON FOLLOWING PAGE)

WAPPL SEVEN ARRIVAL (RNAV)  
(WAPPL.WAPPL7) 251.63

Arrival Routes

HOUSTON, TEXAS

AL-198 (FAA)

ARRIVAL ROUTE DESCRIPTION

From WAPPL on track 250° to cross WLMOR between 15000 and FL210, then on track 250° to HUDZY, then on track 250° to cross CLWSN between 12000 and 14000, then on track 250° to cross SWWAA between 10000 and 12000 and at 250K, then on track 191° to cross PUSHN at or above 8000.

LANDING HOU RUNWAY 4: From PUSHN on track 192° to cross BUGZY at or below 10000, then on track 192° to cross PRTH at or below 7000, then on track 177° to cross SHUUG at 6000 and at 210K, then on track 222° to cross EMARR at 6000, then on track 222°. Expect RADAR vectors to final approach course.

LANDING HOU RUNWAYS 13L/R: From PUSHN on track 192° to cross BUGZY at or below 10000, then on track 192° to cross PRTH at or below 7000, then on track 200° to cross MOLLR at 6000 and at 210K, then on track 251° to VILLI, then on track 311° to cross ALLY at 6000, then on track 311°. Expect RADAR vectors to final approach course.

LANDING HOU RUNWAY 22: From PUSHN on track 192° to cross BUGZY at or below 10000, then on track 175° to cross RTWNG at 7000 and at 210K, then on track 111° to cross MAAHH at 7000, then on track 111°. Expect RADAR vectors to final approach course.

LANDING HOU RUNWAYS 31L/R: From PUSHN on track 192° to cross BUGZY at or below 10000, then on track 192° to cross PRTH at or below 7000, then on track 126° to cross UBETR at 6000 and at 210K, then on track 126°. Expect RADAR vectors to final approach course.

LANDING GLS/TME/AXH/HPY/T41/54T/T00/SGR/ARM/BYY/LBX/LVJ/IWS/EFD:  
From WAPPL on track 250° to cross WLMOR between 15000 and FL210, then on track 250° to HUDZY, then on track 250° to cross CLWSN between 12000 and 14000, then on track 250° to cross SWWAA between 10000 and 12000 and at 250K, then on track 191° to cross PUSHN at or above 8000, then on track 192° to cross BUGZY at or below 10000, then on track 175° to cross PLKTN at 8000, then on track 175°. Expect RADAR vectors to final approach course.

SC-5, 27 NOV 2025 to 25 DEC 2025

SC-5, 27 NOV 2025 to 25 DEC 2025