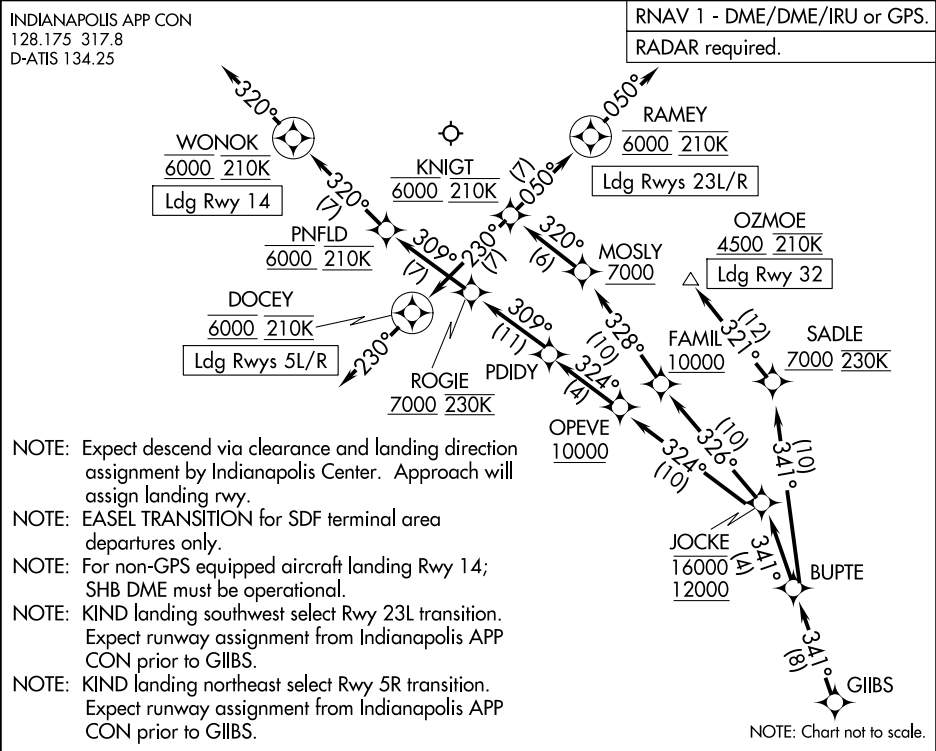


EC-2, 27 NOV 2025 to 25 DEC 2025

EC-2, 27 NOV 2025 to 25 DEC 2025



ARRIVAL ROUTE DESCRIPTION

From GIIBS on track 341° to BUPTTE.

LANDING RUNWAYS 5L/R: From BUPTTE on track 341° to cross JOCKE between 12000 and 16000, then on track 326° to cross FAMIL at or above 10000, then on track 328° to cross MOSLY at or above 7000, then on track 320° to cross KNIGT at 6000 and at 210K, then on track 230° to cross DOCEY at 6000 and at 210K, then on track 230°.

Expect RADAR vectors to final approach course.

LANDING RUNWAY 14: From BUPTTE on track 341° to cross JOCKE between 12000 and 16000, then on track 324° to cross OPEVE at or above 10000, then on track 324° to PDIDY, then on track 309° to cross ROGIE at or above 7000 and at 230K, then on track 309° to cross PNFLD at 6000 and at 210K, then on track 320° to cross WONOK at 6000 and at 210K, then on track 320°.

Expect RADAR vectors to final approach course.

LANDING RUNWAYS 23L/R: From BUPTTE on track 341° to cross JOCKE between 12000 and 16000, then on track 326° to cross FAMIL at or above 10000, then on track 328° to cross MOSLY at or above 7000, then on track 320° to cross KNIGT AT 6000 and at 210K, then on track 050° to cross RAMEY at 6000 and at 210K, then on track 050°.

Expect RADAR vectors to final approach course.

LANDING RUNWAY 32: From BUPTTE on track 341° to cross SADLE at or above 7000 and at 230K, then on track 321° to cross OZMOE at or above 4500 and at 210K.

Expect RNP, GPS, ILS or LOC RWY 32 approach or RADAR vectors to final approach course.