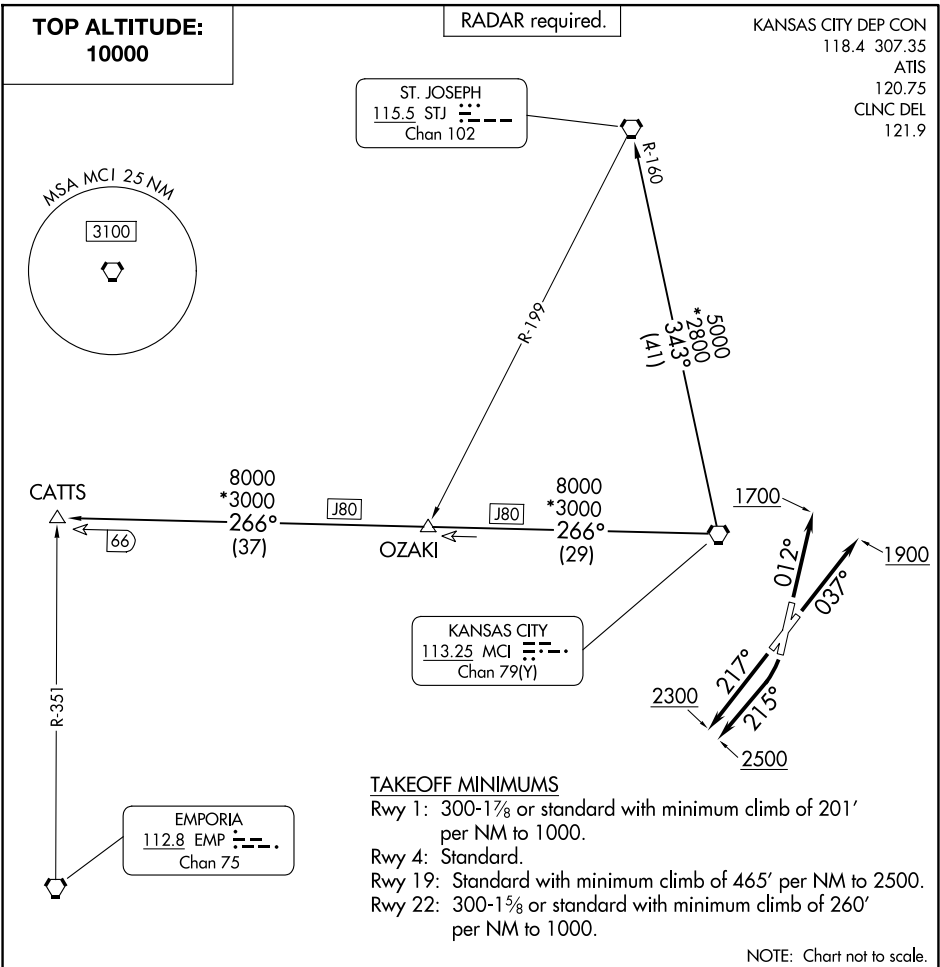


(CHIEF9.MCI) 25107  
CHIEF NINE DEPARTURE

KANSAS CITY DOWNTOWN/WHEELER FLD (MKC)  
AL-213 (FAA) KANSAS CITY, MISSOURI



**DEPARTURE ROUTE DESCRIPTION**

TAKEOFF RUNWAY 1: Climb on heading 012° to 1700, thence. . . .

TAKEOFF RUNWAY 4: Climb on heading 037° to 1900, thence. . . .

TAKEOFF RUNWAY 19: Climbing right turn heading 215° to 2500, thence. . . .

TAKEOFF RUNWAY 22: Climb on heading 217° to 2300, thence. . . .

. . . climb on assigned heading for RADAR vectors to appropriate route. Maintain 10000 or as assigned by ATC, expect filed altitude 10 minutes after departure.

CATTS TRANSITION (CHIEF9.CATTS): From over MCI VORTAC on MCI R-266 to CATTS.

ST. JOSEPH TRANSITION (CHIEF9.STJ): From over MCI VORTAC on MCI R-343 and STJ R-160 to STJ VORTAC.

CHIEF NINE DEPARTURE  
(CHIEF9.MCI) 05OCT23

KANSAS CITY, MISSOURI  
KANSAS CITY DOWNTOWN/WHEELER FLD (MKC)

NC-3, 27 NOV 2025 to 25 DEC 2025

NC-3, 27 NOV 2025 to 25 DEC 2025