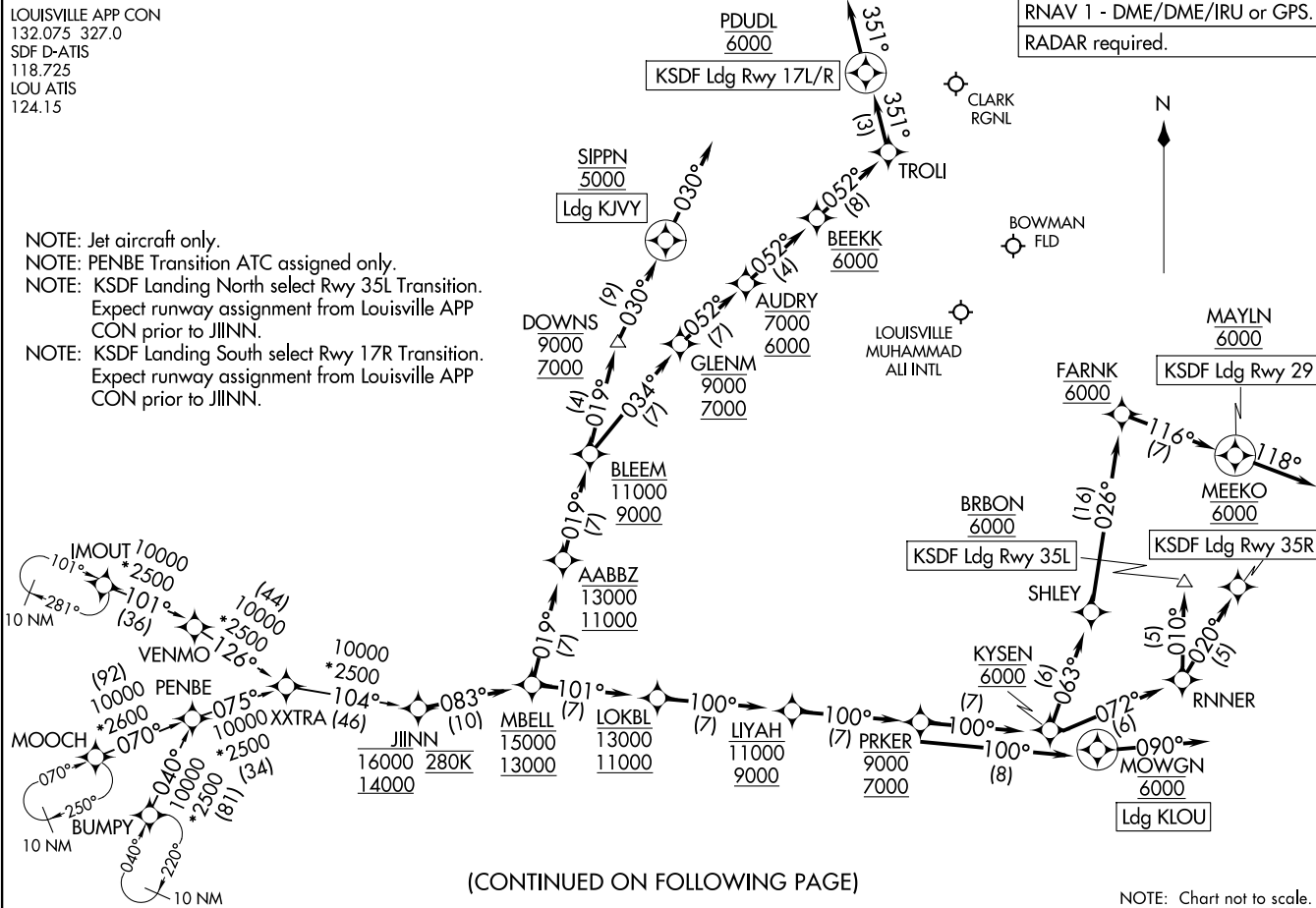


RNAV 1 - DME/DME/IRU or GPS.
RADAR required.

LOUISVILLE APP CON
132.075 327.0
SDF D-ATIS
118.725
LOU ATIS
124.15

NOTE: Jet aircraft only.
NOTE: PENBE Transition ATC assigned only.
NOTE: KSDf Landing North select Rwy 35L Transition.
Expect runway assignment from Louisville APP
CON prior to JIINN.
NOTE: KSDf Landing South select Rwy 17R Transition.
Expect runway assignment from Louisville APP
CON prior to JIINN.



(CONTINUED ON FOLLOWING PAGE)

NOTE: Chart not to scale.

ARRIVAL ROUTE DESCRIPTION

BUMPY TRANSITION (BUMPY.MBELL5):
IMOUT TRANSITION (IMOUT.MBELL5):
MOOCH TRANSITION (MOOCH.MBELL5):
PENBE TRANSITION (PENBE.MBELL5):

KSDF: From JIINN on track 083° to cross MBELL between 13000 and 15000.

LANDING KSDF RUNWAYS 17L/R: From MBELL on track 019° to cross AABZ between 11000 and 13000, then on track 019° to cross BLEEM between 9000 and 11000, then on track 034° to cross GLENM between 7000 and 9000, then on track 052° to cross AUDRY between 6000 and 7000, then on track 052° to cross BEEKK at 6000, then on track 052° to TROLL, then on track 351° to cross PDUDL at 6000, then on track 351°. Expect RADAR vectors to final approach course.

LANDING KSDF RUNWAY 29: From MBELL on track 101° to cross LOKBL between 11000 and 13000, then on track 100° to cross LIYAH between 9000 and 11000, then on track 100° to cross PRKER between 7000 and 9000, then on track 100° to cross KYSEN at 6000, then on track 063° to SHLEY, then on track 026° to cross FARNK at 6000, then on track 116° to cross MAYLN at 6000, then on track 118°. Expect RADAR vectors to final approach course.

LANDING KSDF RUNWAY 35L: From MBELL on track 101° to cross LOKBL between 11000 and 13000, then on track 100° to cross LIYAH between 9000 and 11000, then on track 100° to cross PRKER between 7000 and 9000, then on track 100° to cross KYSEN at 6000, then on track 072° to RNNER, then on track 010° to cross BRBON at 6000. Expect ILS or LOC RWY 35L approach.

LANDING KSDF RUNWAY 35R: From MBELL on track 101° to cross LOKBL between 11000 and 13000, then on track 100° to cross LIYAH between 9000 and 11000, then on track 100° to cross PRKER between 7000 and 9000, then on track 100° to cross KYSEN at 6000, then on track 072° to RNNER, then on track 020° to cross MEEKO at 6000. Expect ILS or LOC RWY 35R approach.

LANDING KJVY: From JIINN on track 083° to cross MBELL between 13000 and 15000, then on track 019° to cross AABZ between 11000 and 13000, then on track 019° to cross BLEEM between 9000 and 11000, then on track 019° to cross DOWNS between 7000 and 9000, then on track 030° to cross SIPPN at 5000, then on track 030°. Expect RADAR vectors to final approach course.

LANDING KLOU: From JIINN on track 083° to cross MBELL between 13000 and 15000, then on track 101° to cross LOKBL between 11000 and 13000, then on track 100° to cross LIYAH between 9000 and 11000, then on track 100° to cross PRKER between 7000 and 9000, then on track 100° to cross MOWGN at 6000, then on track 090°. Expect RADAR vectors to final approach course.

SE-1, 27 NOV 2025 to 25 DEC 2025

SE-1, 27 NOV 2025 to 25 DEC 2025