

## CRSON SEVEN DEPARTURE (RNAV)

D-ATIS  
127.75  
CLNC DEL  
125.2  
CPDLC

GND CON

121.0

121.9 379

121.65 379.2 (Rwy 18R)

MEMPHIS TOWER

118.3 257.8 (Rwy 9-27)

119.7 257.8 (Rwys 18C-36C, 18L-36R)

128.425 257.8 (Rwy 18R-36L)

MEMPHIS DEP CON

124.15 385.45

**TOP ALTITUDE:**  
5000

Figure 1 is a diagram illustrating the sequence of observations for the 1990 outburst of 1900. The diagram shows a series of four star-like symbols representing observations, connected by arrows. The first observation is labeled LYZZI. The second observation is labeled CRSON. The third observation is labeled 1900, with an asterisk (\*) next to it. The fourth observation is labeled HUMMS. The angles between the observations are indicated: 033° (3) between LYZZI and CRSON, and 032° (49) between CRSON and HUMMS. The observation 1900 is marked with an asterisk (\*).

TAKEOFF MINIMUMS:

Rwy 9, 18L/C/R, 27, 36L/C/R:

Standard with minimum climb of 500' per NM to 860.

NOTE: DME/DME/IRU or GPS required.

NOTE: RNAV 1.

NOTE: Turbojets only.

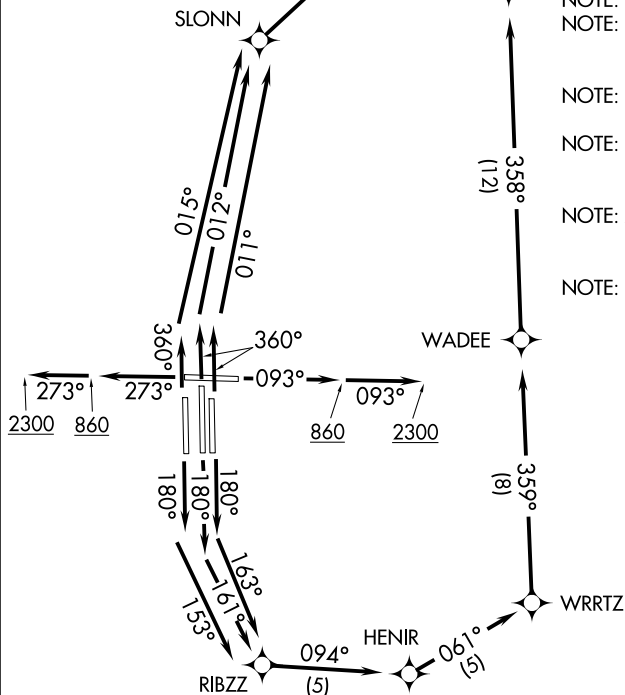
NOTE: Takeoff Rwy 18L/C/R, 36L/C/R -  
RADAR required for non-GPS  
equipped aircraft.

NOTE: Takeoff Rwy 9, 27 - RADAR required.

NOTE: Transponder code will be issued via PDC or Memphis clearance delivery.

NOTE: Accelerate to 250K, reaching 10000 MSL, maintain 250K or greater, if unable advise ATC.

NOTE: If unable to accept climb rate, advise ATC on initial contact.



NOTE: Chart not to scale.

(NARRATIVE ON FOLLOWING PAGE)

## CRSON SEVEN DEPARTURE (RNAV)

(CRSON7.CRSON) 31DEC20

MEMPHIS, TENNESSEE

MEMPHIS INTL (MEM)

SE-1, 27 NOV 2025 to 25 DEC 2025



DEPARTURE ROUTE DESCRIPTION

TAKEOFF RUNWAY 9: Climb on heading 093° to 860, then continue climb to 2300 on heading 093° or as assigned by ATC, for vectors to LYZZI, then on depicted route to CRSON, thence....

TAKEOFF RUNWAY 18C: Climb on heading 180° to intercept course 161° to RIBZZ, then on depicted route to CRSON, thence....

TAKEOFF RUNWAY 18L: Climb on heading 180° to intercept course 163° to RIBZZ, then on depicted route to CRSON, thence....

TAKEOFF RUNWAY 18R: Climb on heading 180° to intercept course 153° to RIBZZ, then on depicted route to CRSON, thence....

TAKEOFF RUNWAY 27: Climb on heading 273° to 860, then continue climb to 2300 on heading 273° or as assigned by ATC, for vectors to LYZZI, then on depicted route to CRSON, thence....

TAKEOFF RUNWAY 36C: Climb on heading 360° to intercept course 012° to SLONN, then on depicted route to CRSON, thence....

TAKEOFF RUNWAY 36L: Climb on heading 360° to intercept course 015° to SLONN, then on depicted route to CRSON, thence....

TAKEOFF RUNWAY 36R: Climb on heading 360° to intercept course 011° to SLONN, then on depicted route to CRSON, thence....

....maintain 5000. Expect clearance to filed altitude within ten (10) minutes after departure.

HUMMS TRANSITION (CRSON7.HUMMS):