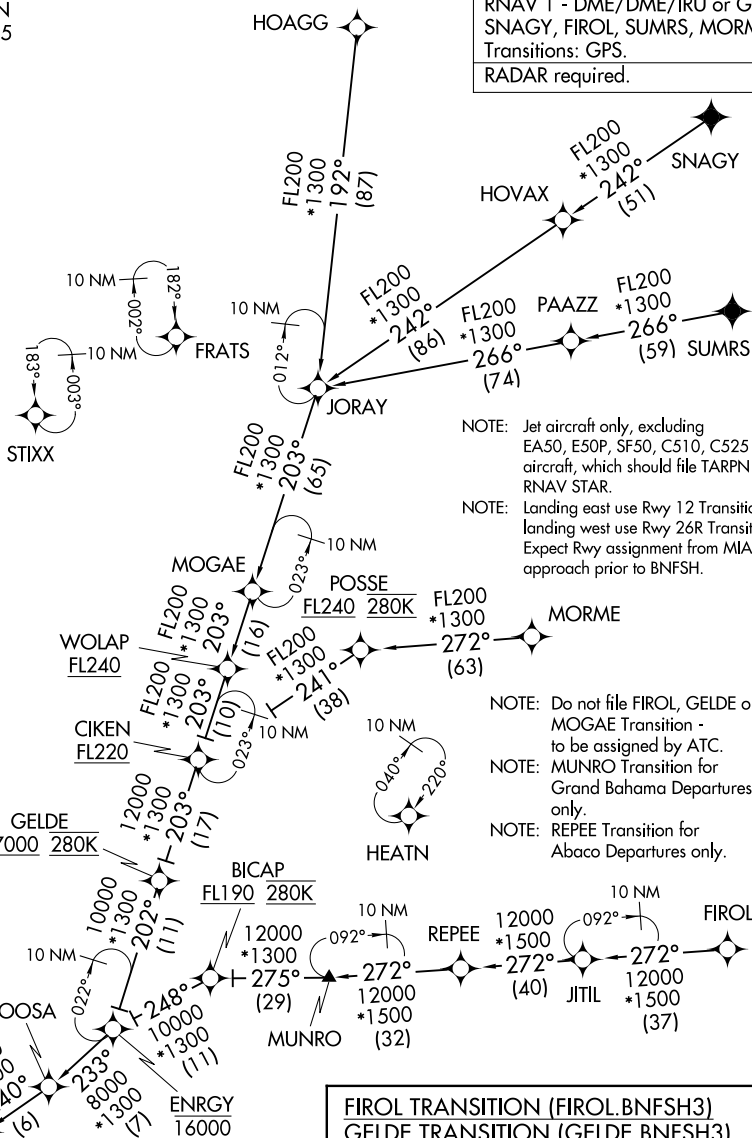


AL-257 (FAA)

MIAMI, FLORIDA

RNAV 1 - DME/DME/IRU or GPS.
SNAGY, FIROL, SUMRS, MORME
Transitions: GPS.
RADAR required.



NOTE: Jet aircraft only, excluding
EA50, E50P, SF50, C510, C525
aircraft, which should file TARPIN
RNAV STAR.

NOTE: Landing east use Rwy 12 Transition,
landing west use Rwy 26R Transition.
Expect Rwy assignment from MIA
approach prior to BNFSH.

200
300
72°
63)

MORME

NOTE: Do not file FIROL, GELDE or
MOGAE Transition -
to be assigned by ATC.

NOTE: MUNRO Transition for
Grand Bahama Departures
only.

NOTE: REPEE Transition for
Abaco Departures only.

FIROL TRANSITION (FIROL.BNFSH3)
 GELDE TRANSITION (GELDE.BNFSH3)
 HOAGG TRANSITION (HOAGG.BNFSH3)
 MOGAE TRANSITION (MOGAE.BNFSH3)
 MORME TRANSITION (MORME.BNFSH3)
 MUNRO TRANSITION (MUNRO.BNFSH3)
 REPEE TRANSITION (REPEE.BNFSH3)
 SNAGY TRANSITION (SNAGY.BNFSH3)
 SUMRS TRANSITION (SUMRS.BNFSH3)

See following page
for arrival routes.

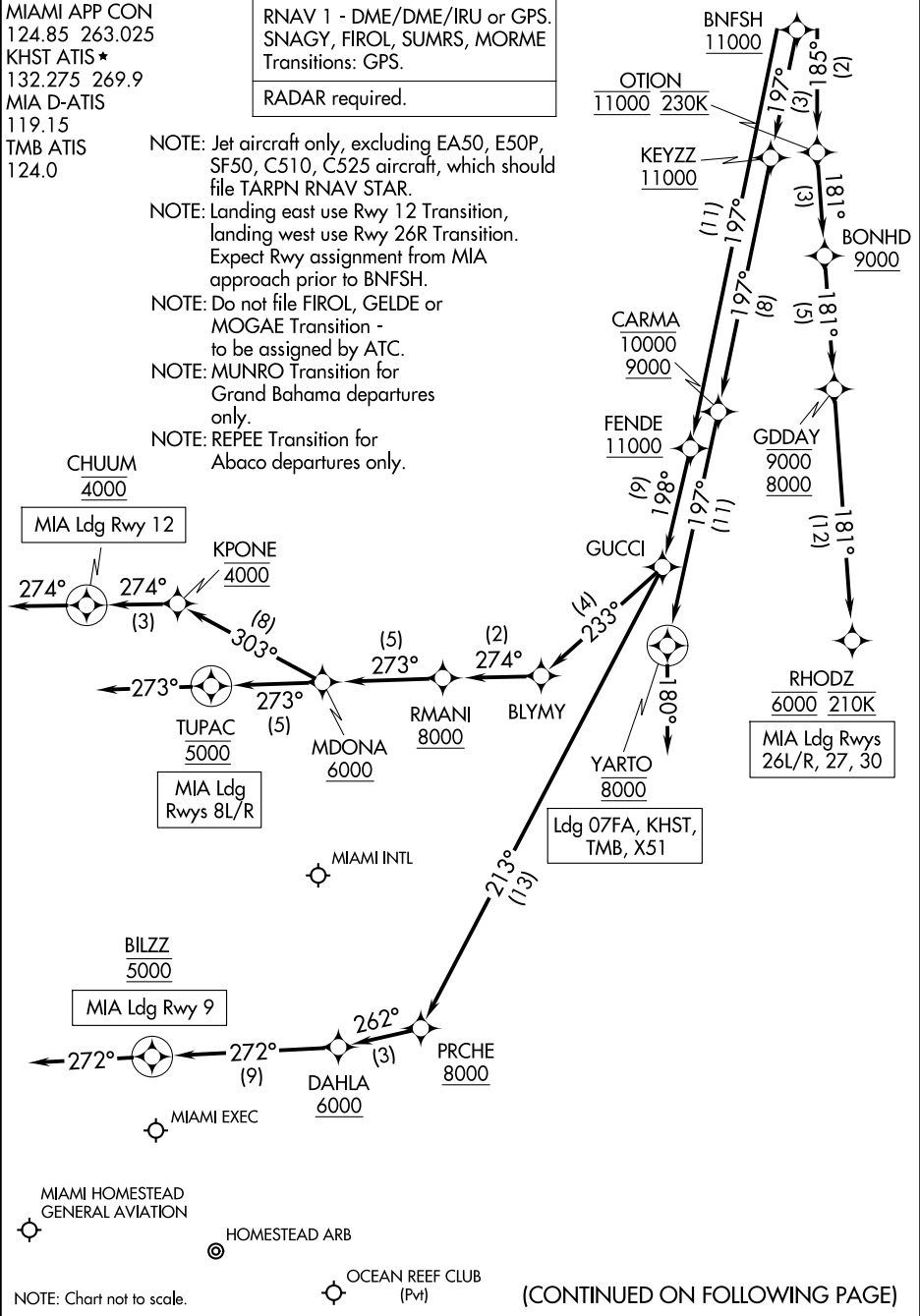
(CONTINUED ON
FOLLOWING PAGE)

NOTE: Chart not to scale.

MIAMI, FLORIDA

(BNFSH.BNFSH3) 12JUN25

SE-3, 27 NOV 2025 to 25 DEC 2025



ARRIVAL ROUTE DESCRIPTION

LANDING MIA RUNWAYS 8L/R: From BNFSH on track 197° to cross FENDE at or above 11000, then on track 198° to GUCCI, then on track 233° to BLYMY, then on track 274° to cross RMANI at or above 8000, then on track 273° to cross MDONA at or above 6000, then on track 273° to cross TUPAC at 5000, then on track 273°. Expect RADAR vectors to final approach course.

LANDING MIA RUNWAY 9: From BNFSH on track 197° to cross FENDE at or above 11000, then on track 198° to GUCCI, then on track 213° to cross PRCHE at or above 8000, then on track 262° to cross DAHLA at or above 6000, then on track 272° to cross BILZZ at 5000, then on track 272°. Expect RADAR vectors to final approach course.

LANDING MIA RUNWAY 12: From BNFSH on track 197° to cross FENDE at or above 11000, then on track 198° to GUCCI, then on track 233° to BLYMY, then on track 274° to cross RMANI at or above 8000, then on track 273° to cross MDONA at or above 6000, then on track 303° to cross KPONE at 4000, then on track 274° to cross CHUUM at 4000, then on track 274°. Expect RADAR vectors to final approach course.

LANDING MIA RUNWAYS 26L/R, 27, 30: From BNFSH on track 185° to cross OTION at 11000 and at 230K, then on track 181° to cross BONHD at or above 9000, then on track 181° to cross GDDAY between 8000 and 9000, then on track 181° to cross RHODZ at 6000 and at 210K. Expect assigned instrument approach to Rwy 26L/R or RADAR vectors to final approach course for Rwys 27, 30.

LANDING 07FA/X51/KHST/TMB: From BNFSH on track 197° to cross KEYZZ at or above 11000, then on track 197° to cross CARMA between 9000 and 10000, then on track 197° to cross YARTO at 8000, then on heading 180°. Expect RADAR vectors to final approach course.