

(ORSKY3.ORSKY) 23334
ORSKY THREE DEPARTURE

MINNEAPOLIS-ST PAUL INTL/WOLD-CHAMBERLAIN (MSP)
AL-264 (FAA) MINNEAPOLIS, MINNESOTA

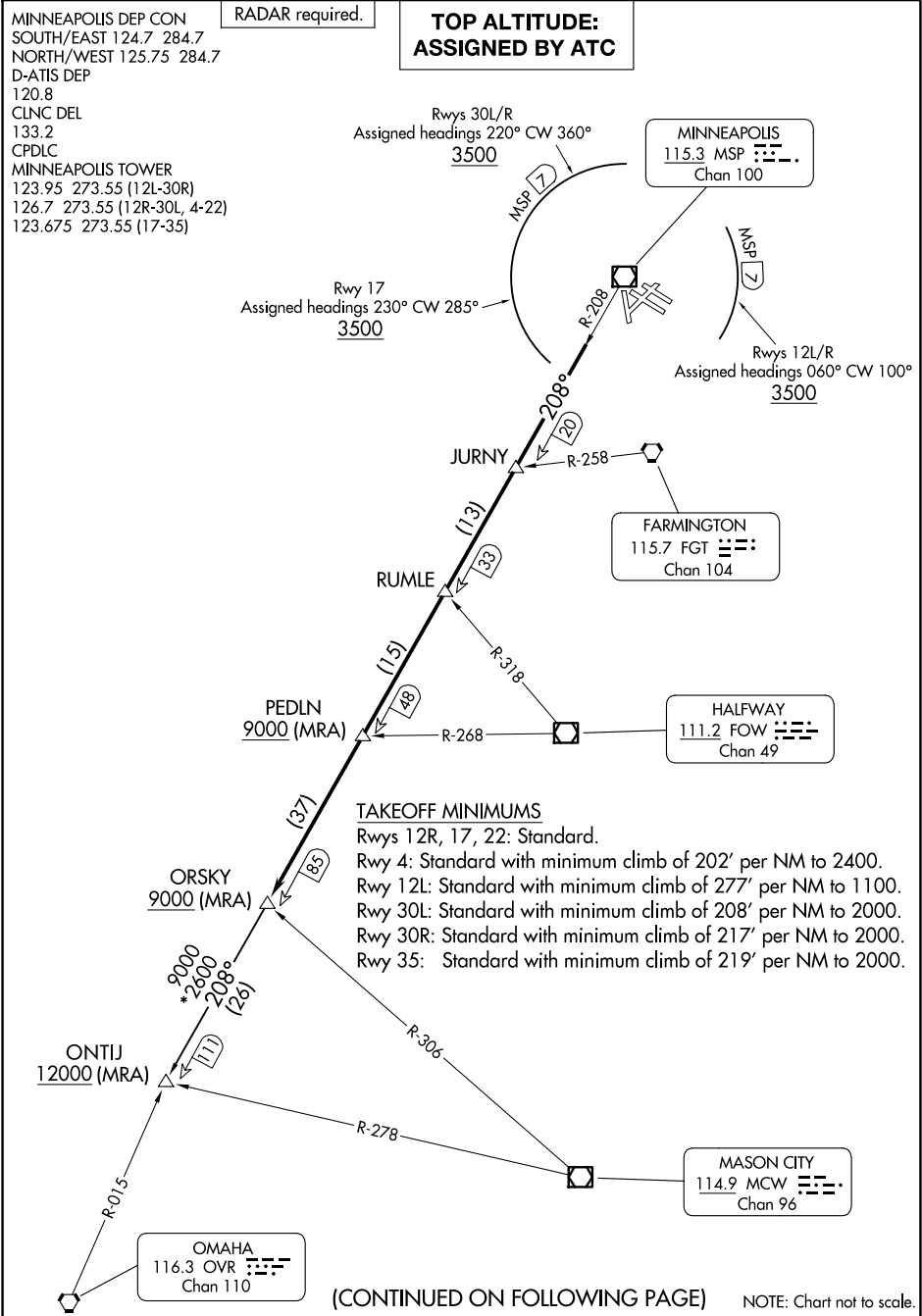
MINNEAPOLIS DEP CON
SOUTH/EAST 124.7 284.7
NORTH/WEST 125.75 284.7
D-ATIS DEP
120.8
CLNC DEL
133.2
CPDLC
MINNEAPOLIS TOWER
123.95 273.55 (12L-30R)
126.7 273.55 (12R-30L, 4-22)
123.675 273.55 (17-35)

RADAR required.

TOP ALTITUDE:
ASSIGNED BY ATC

NC-1, 27 NOV 2025 to 25 DEC 2025

NC-1, 27 NOV 2025 to 25 DEC 2025



ORSKY THREE DEPARTURE
(ORSKY3.ORSKY) 08SEP22

MINNEAPOLIS, MINNESOTA
MINNEAPOLIS-ST PAUL INTL/WOLD-CHAMBERLAIN (MSP)



DEPARTURE ROUTE DESCRIPTION

TAKEOFF ALL RUNWAYS: Climb on assigned heading for RADAR vectors to assigned fix on MSP R-208, then on depicted route to ORSKY, then on transition. Maintain ATC assigned altitude. Expect filed altitude 10 minutes after departure.

ALL AIRCRAFT: ATC CROSSING RESTRICTIONS AND GRADIENTS: If unable to accept crossing restrictions and climb rates advise ATC prior to taxi.

RUNWAY 12L/R DEPARTURES: For assigned headings from 060° clockwise to 100°, cross MSP 7 DME at or above 3500, Rwy 12L: 540' per NM to 3500, 12R: 542' per NM to 3500.

RUNWAY 17: For assigned headings from 230° clockwise to 285°, cross MSP 7 DME at or above 3500, 512' per NM to 3500.

RUNWAYS 30L/R: For assigned headings from 220° clockwise to 360°, cross MSP 7 DME at or above 3500, 380' per NM to 3500.

ONTIJ TRANSITION (ORSKY3.ONTIJ): From over ORSKY INT on MSP R-208 to ONTIJ INT.

NC-1, 27 NOV 2025 to 25 DEC 2025

NC-1, 27 NOV 2025 to 25 DEC 2025