

(OAK6.OAK) 25275

OAKLAND SIX DEPARTURE

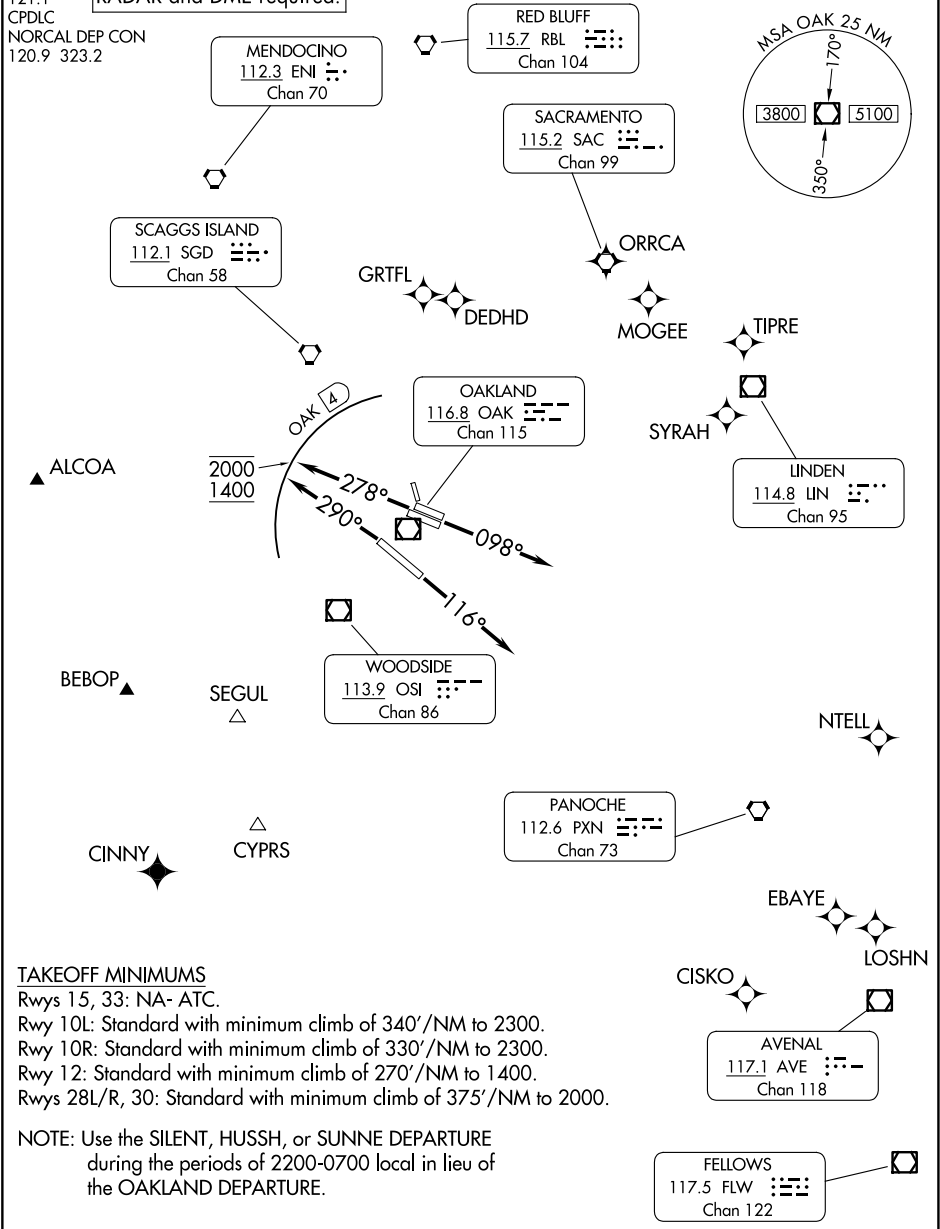
AL-294 (FAA)

OAKLAND SAN FRANCISCO BAY (OAK)  
OAKLAND, CALIFORNIA

D-ATIS  
133.775  
CLNC DEL  
121.1  
CPDLC  
NORCAL DEP CON  
120.9 323.2

RNAV 1-GPS. From ALCOA, BEBOP, CINNY, CISKO, DEDHD, EBAYE,  
GRTFL, LOSHN, MOGEE, NTELL, ORRCA, SYRAH, or TIPRE.  
RADAR and DME required.

TOP ALTITUDE:  
ASSIGNED BY ATC



(CONTINUED ON FOLLOWING PAGE)

OAKLAND SIX DEPARTURE

(OAK6.OAK) 25JAN24

OAKLAND, CALIFORNIA  
OAKLAND SAN FRANCISCO BAY (OAK)

SW-2, 27 NOV 2025 to 25 DEC 2025

SW-2, 27 NOV 2025 to 25 DEC 2025

<div><div><div>▼</div></div></div>	DEPARTURE ROUTE DESCRIPTION
	<div><div><div>TAKEOFF RUNWAYS 10L/R:</div><div>Climb on heading 098° for RADAR vectors to assigned route/fix, thence. . . .</div></div><div><div>TAKEOFF RUNWAY 12:</div><div>Climb on heading 116° for RADAR vectors to assigned route/fix, thence. . . .</div></div><div><div>TAKEOFF RUNWAYS 28L/R:</div><div>Climb on heading 278° for RADAR vectors to assigned route/fix. Cross 4 DME northwest of OAK VOR/DME at or above 1400 and at or below 2000, thence. . . .</div></div><div><div>TAKEOFF RUNWAY 30:</div><div>Climb on heading 290° for RADAR vectors to assigned route/fix. Cross 4 DME northwest of OAK VOR/DME at or above 1400 and at or below 2000, thence. . . .</div></div><div><div>. . . .maintain ATC assigned altitude. Expect filed altitude ten minutes after departure.</div></div><div><div>LOST COMMUNICATIONS:</div><div>If not in contact with departure control after reaching 5000', continue climb to assigned altitude and proceed direct to assigned route/fix.</div></div></div>

SW-2, 27 NOV 2025 to 25 DEC 2025

SW-2, 27 NOV 2025 to 25 DEC 2025