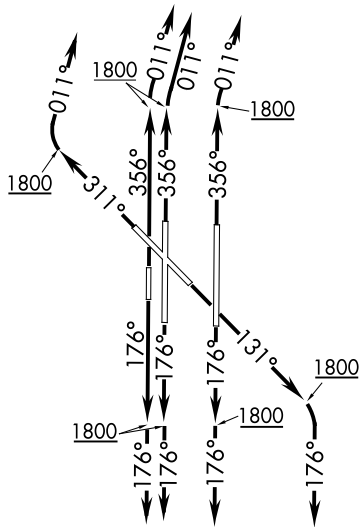


## KRMSN FOUR DEPARTURE (RNAV)



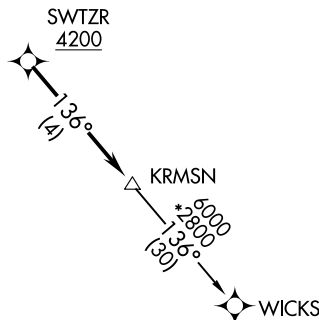
**TOP ALTITUDE:  
ASSIGNED BY ATC**

D-ATIS	
125.85	
CLNC DEL	
124.35	
GND CON	
121.9	348.6
ROGERS TOWER	
119.35	269.45
OKE CITY DEP CON	
124.2	336.4

NOTE: RADAR required.  
NOTE: DME/DME/IRU or GPS required.  
NOTE: RNAV 1.

## TAKEOFF MINIMUMS

Rwys 13, 17L/R, 18, 31, 35L/R, 36: Standard with minimum climb of 500' per NM to 1800.



NOTE: Chart not to scale.



## DEPARTURE ROUTE DESCRIPTION

TAKEOFF RUNWAY 13: Climb on heading 131° to 1800, then right turn heading 176° or as assigned by ATC, expect RADAR vectors to cross SWTZR at or above 4200, thence...

TAKEOFF RUNWAYS 17L/R, 18: Climb on heading 176° to 1800, then heading 176° or as assigned by ATC, expect RADAR vectors to cross SWTZR at or above 4200, thence...

**TAKEOFF RUNWAY 31:** Climb on heading 311° to 1800, then right turn heading 011° or as assigned by ATC, expect RADAR vectors to cross SWTZR at or above 4200, thence...

**TAKEOFF RUNWAYS 35L/R, 36:** Climb on heading 356° to 1800, then right turn heading 011° or as assigned by ATC, expect RADAR vectors to cross SWTZR at or above 4200, thence...

... on track 136° to KRMSN, then on (transition). Maintain ATC assigned altitude. Expect filed altitude 10 minutes after departure.

WICKS TRANSITION (KRMSN4.WICKS)

## KRMSN FOUR DEPARTURE (RNAV)

(KRMSN4.KRMSN) 07OCT21

OKLAHOMA CITY, OKLAHOMA  
OKC WILL ROGERS INTL (OKC)