

HI-ILS Y or LOC Y RWY 14L

LOC I-TYF 111.5	APCH CRS 138°	Rwy Idg 10,008 TDZE 14 Arpt Elev 17
---------------------------	-------------------------	--

[USAF]

TYNDALL AFB (KPAM)

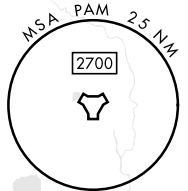
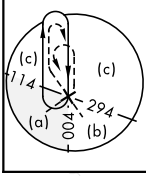
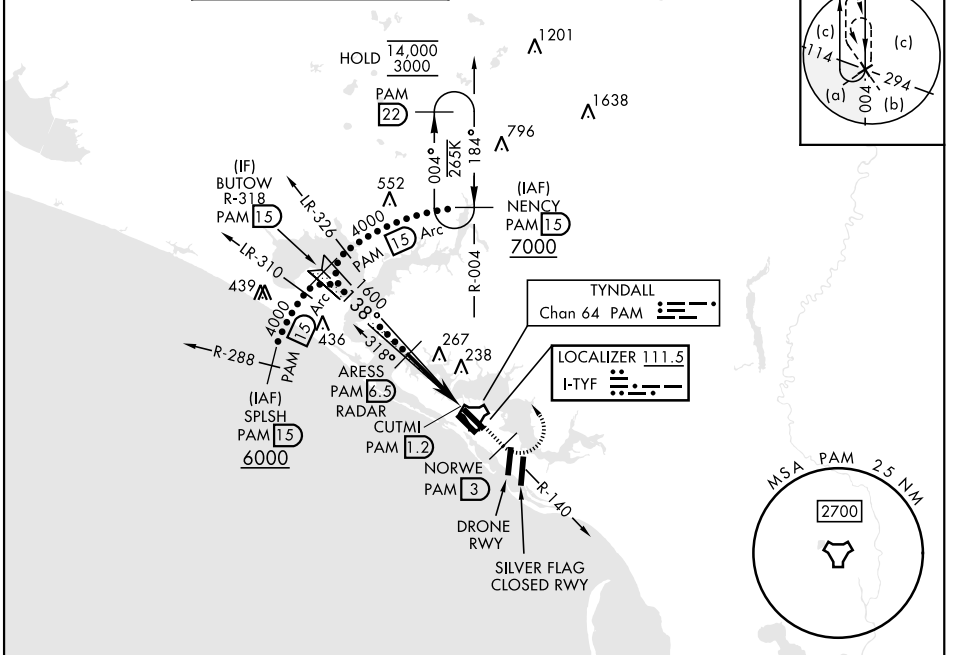
DME or RADAR required.

ALSF-1 (A1)

MISSED APPROACH: Track outbound PAM TACAN R-140 to 3 DME (NORWE), then turn left to join PAM R-004 to 15 DME (NENCY) and hold. Maintain 3000.

* When ALS inop, increase RVR to 40, vis to 3/4 mile.
** When ALS inop, increase vis to 1 1/2 miles.

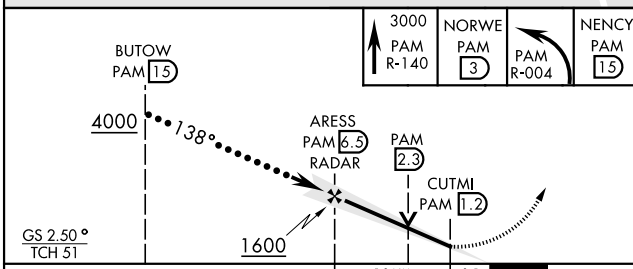
ATIS ★ 254.4	APP CON 125.2 392.1 (N abv 5000') 120.825 379.3 (N blw 5000') 124.15 338.35 (S abv 5000') 119.775 317.45 (S blw 5000')	TOWER ★ 133.95 263.15	GND CON 121.9 259.3	ASR/PAR
------------------------	--	---------------------------------	-------------------------------	---------



SE-3, 27 NOV 2025 to 25 DEC 2025

SE-3, 27 NOV 2025 to 25 DEC 2025

EMERG SAFE ALT 100 NM 3300



ELEV 17	TDZE 14
---------	---------

Recommend Rwy 14L-32R for apch end engagement of A-Gear. HIRL all rwys

FAF to MAP 5.3 NM					
Knots	120	140	160	180	200
Min:Sec	2:39	2:16	1:59	1:46	1:35

CATEGORY	C	D	E
S-ILS 14L *	214/24	200	(200-1/2)
S-LOC 14L **	500/50	486	(500-1)
CIRCLING	540-1 1/2 523 (600-1 1/2)	580-2	563 (600-2)

HI-ILS Y or LOC Y RWY 14L