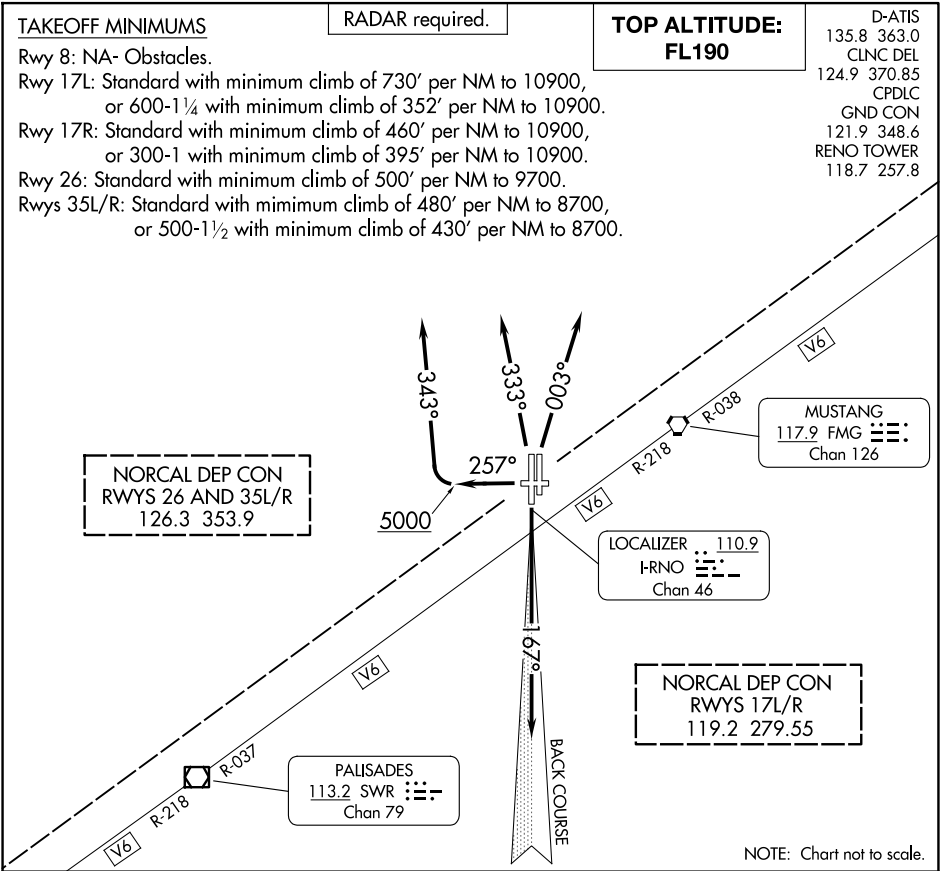


RENO ONE DEPARTURE

AL-346 (FAA)

RENO/TAHOE INTL (RNO)  
RENO, NEVADA



**DEPARTURE ROUTE DESCRIPTION**

**TAKEOFF RUNWAYS 17L/R:** Climb on heading 167° and I-RNO localizer south course. Thence. . .

**TAKEOFF RUNWAY 26:** Climb on heading 257° to 5000 then climbing right turn heading 343°. Thence. . .

**TAKEOFF RUNWAYS 35L/R:** Climb on heading 333° CW 003° as assigned by ATC. Thence. . .

. . . All aircraft maintain FL190 or assigned altitude. Expect filed altitude within 5 minutes after departure. Expect RADAR vectors to assigned route/fix.

**LOST COMMUNICATIONS:** If not in contact with departure control within one minute after takeoff, maintain assigned heading until passing 10000, thence. . .

**RUNWAYS 17L/R DEPARTURES:** Turn left direct FMG VORTAC, then on assigned route.

**RUNWAYS 26 and 35L/R DEPARTURES:** Turn right direct FMG VORTAC, then on assigned route.

RENO ONE DEPARTURE