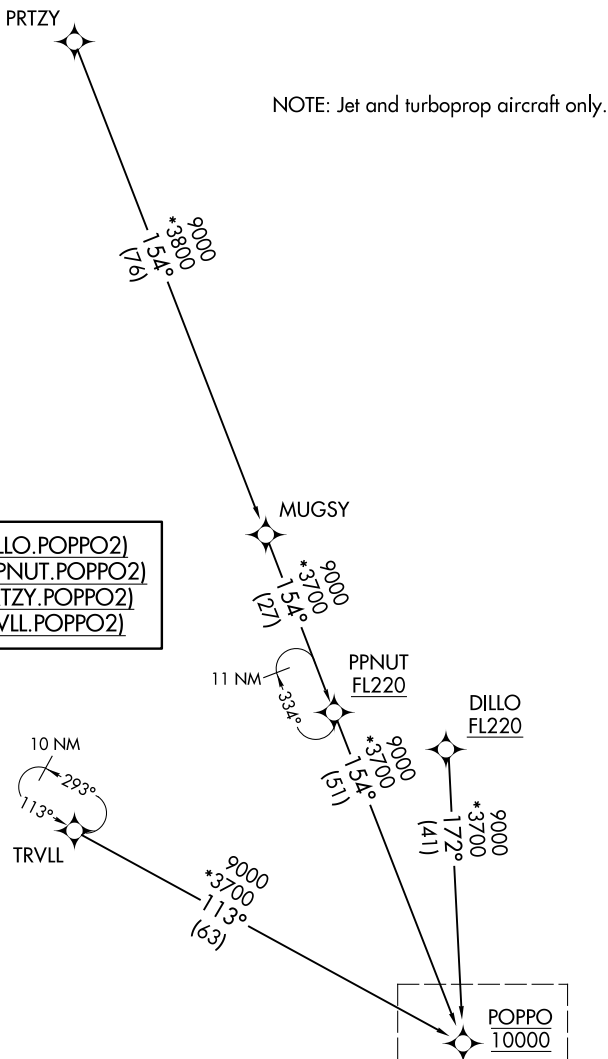


POPPO TWO ARRIVAL (RNAV) Transition Routes

SAN ANTONIO, TEXAS

| |
|------------------------------|
| RNAV 1 - DME/DME/IRU or GPS. |
| RADAR required. |

SAN ANTONIO APP CON
125.1 307.0
BAZ ATIS
119.325
KRND ATIS ★
290.525
SAT D-ATIS
118.9
SKF ATIS
120.45 273.5
SSF ATIS
128.8



NOTE: Chart not to scale. (CONTINUED ON FOLLOWING PAGE)

See following page
for arrival routes.

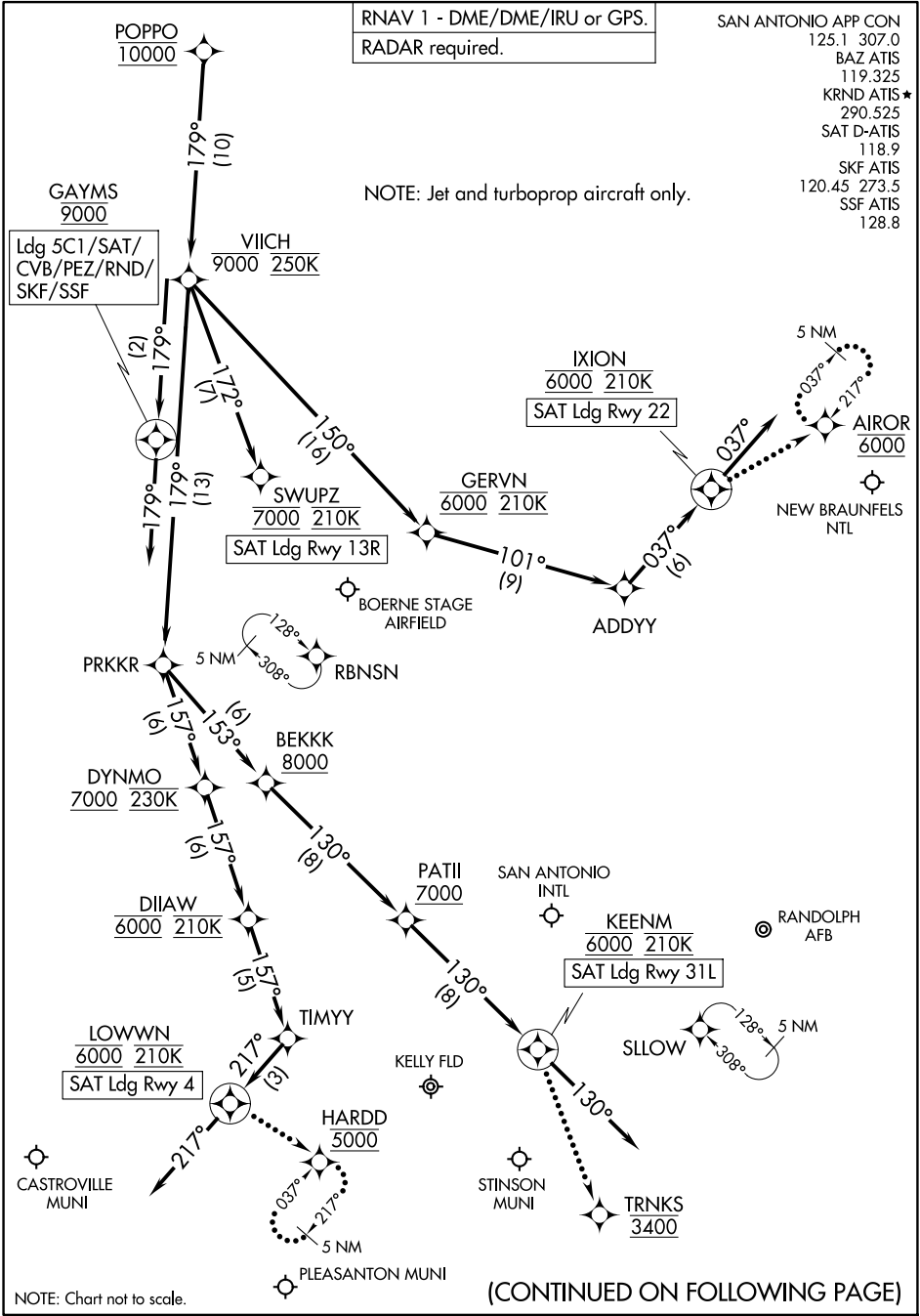
POPPO TWO ARRIVAL (RNAV) Transition Routes

SAN ANTONIO, TEXAS

(POPPO.POPPO2) 27NOV25

SC-3, 27 NOV 2025 to 25 DEC 2025

SC-3, 27 NOV 2025 to 25 DEC 2025



SC-3, 27 NOV 2025 to 25 DEC 2025

SC-3, 27 NOV 2025 to 25 DEC 2025

ARRIVAL ROUTE DESCRIPTION

SAN ANTONIO INTL (SAT): From POPPO on track 179° to cross VIICH at or below 9000 and at 250K.

LANDING SAT RUNWAY 4: From VIICH on track 179° to PRKKR, then on track 157° to cross DYNMO at or above 7000 and at 230K, then on track 157° to cross DIIAW at 6000 and at 210K, then on track 157° to TIMYY, then on track 217° to cross LOWWN at 6000 and at 210K, then on track 217°. Expect RADAR vectors to final approach course.

LANDING SAT RUNWAY 13R: From VIICH on track 172° to cross SWUPZ at 7000 and at 210K. Expect ILS or LOC RWY 13R approach.

LANDING SAT RUNWAY 22: From VIICH on track 150° to cross GERVN at 6000 and at 210K, then on track 101° to ADDYY, then on track 037° to cross IXION at 6000 and at 210K, then on track 037°. Expect RADAR vectors to final approach course.

LANDING SAT RUNWAY 31L: From VIICH on track 179° to PRKKR, then on track 153° to cross BEKKK at or above 8000, then on track 130° to cross PATII at or above 7000, then on track 130° to cross KEENM at 6000 and at 210K, then on track 130°. Expect RADAR vectors to final approach course.

LANDING SKF/BAZ/CVB/SSF/PEZ/5C1/RND: From POPPO on track 179° to cross VIICH at or below 9000 and at 250K, then on track 179° to cross GAYMS at 9000, then on track 179°. Expect RADAR vectors to final approach course.

LOST COMMUNICATIONS

SAT RUNWAY 4: After LOWWN proceed to HARDD at 5000 and hold.

SAT RUNWAY 22: After IXION proceed to AIROR at 6000 and hold.

SAT RUNWAY 31L: After KEENM proceed to TRNKS at 3400, then on ILS or LOC RWY 31L or RNAV (GPS) Y RWY 31L approach.