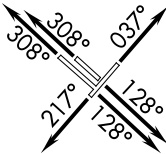


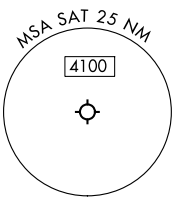
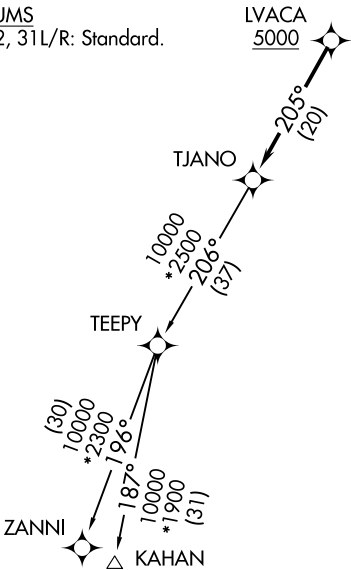
SAN ANTONIO DEP CON
125.7 290.225 (13L/R, 22, 31L/R)
127.1 269.1 (4)
D-ATIS
118.9
CLNC DEL
126.7
CPDLC
GND CON
121.9 348.6
SAN ANTONIO TOWER
119.8 257.8

RNAV 1 - DME/DME IRU or GPS.
RADAR required for non-GPS
equipped aircraft. RADAR required.

TOP ALTITUDE:
5000



TAKEOFF MINIMUMS
Rwys 4, 13L/R, 22, 31L/R: Standard.



NOTE: Chart not to scale.

▼

DEPARTURE ROUTE DESCRIPTION

TAKEOFF RUNWAY 4: Climb on heading 037° or as assigned by ATC, for vectors to LVACA, thence. . .

TAKEOFF RUNWAYS 13L/R: Climb on heading 128° or as assigned by ATC, for vectors to LVACA, thence. . .

TAKEOFF RUNWAY 22: Climb on heading 217° or as assigned by ATC, for vectors to LVACA, thence. . .

TAKEOFF RUNWAYS 31L/R: Climb on heading 308° or as assigned by ATC, for vectors to LVACA, thence. . .

. . .on track 205° to TJANO, then on transition. Maintain 5000. Expect filed altitude 10 minutes after departure.

KAHAN TRANSITION (TJANO2.KAHAN)

ZANNI TRANSITION (TJANO2.ZANNI)