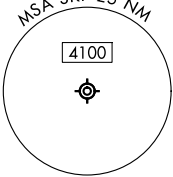
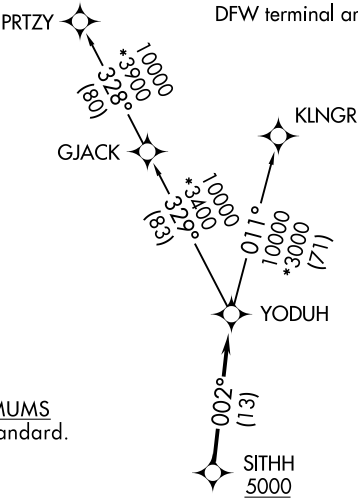


SAN ANTONIO DEP CON 125.7 290.225 ATIS 120.45 273.5 GND CON 121.8 289.4 KELLY TOWER 124.3 322.35	RNAV 1 - DME/DME IRU or GPS.	TOP ALTITUDE: ASSIGNED BY ATC
	RADAR required for non-GPS equipped aircraft. RADAR required.	

NOTE: Aircraft destined for airports north/northeast of DFW terminal area must file the KLNGR Transition.

TAKEOFF MINIMUMS
Rwys 16, 34: Standard.



NOTE: Chart not to scale.

▼	DEPARTURE ROUTE DESCRIPTION
	<u>TAKEOFF RUNWAY 16:</u> Climb on heading 158° or as assigned by ATC, for vectors to SITHH, thence. . .
	<u>TAKEOFF RUNWAY 34:</u> Climb on heading 338° or as assigned by ATC, for vectors to SITHH, thence. . .
	. . .on track 002° to YODUH, then on transition. Maintain ATC assigned altitude. Expect filed altitude 10 minutes after departure.
	<u>KLNGR TRANSITION (YODUH2.KLNGR)</u> <u>PRTZY TRANSITION (YODUH2.PRTZY)</u>