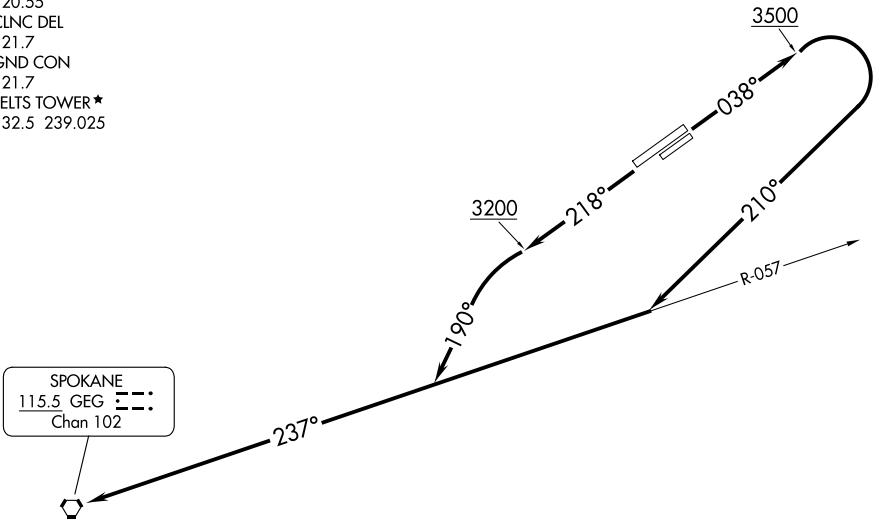
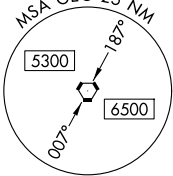


SPOKANE DEP CON  
133.35 263.0  
ATIS  
120.55  
CLNC DEL  
121.7  
GND CON  
121.7  
FELTS TOWER ★  
132.5 239.025



TAKEOFF MINIMUMS

- Rwy 4L: Standard with minimum climb of 495’ per NM to 6000, or 2800-3 for VCOA.
- Rwy 4R: Standard with minimum climb of 485’ per NM to 6000, or 2800-3 for VCOA.
- Rwy 22L: Standard with minimum climb of 230’ per NM to 2800, or 2800-3 for VCOA.
- Rwy 22R: Standard with minimum climb of 250’ per NM to 2800, or 2800-3 for VCOA.



(CONTINUED ON FOLLOWING PAGE) NOTE: Chart not to scale.

DEPARTURE ROUTE DESCRIPTION

**TAKEOFF RUNWAYS 4L/R:** Climb on heading 038° to 3500, then climbing right turn to heading 210° to intercept GEG VORTAC R-057 to GEG VORTAC, thence. . . .

**TAKEOFF RUNWAYS 22L/R:** Climb on heading 218° to 3200, then climbing left turn to heading 190° to intercept GEG VORTAC R-057 to GEG VORTAC, thence. . . .

**VCOA ALL RUNWAYS:** Obtain ATC approval for VCOA when requesting IFR clearance. Climb in visual conditions to cross Felts Fld at or above 4600, then on GEG R-057 to GEG VORTAC, thence...

. . . .cross GEG VORTAC at or above MCA/MEA for assigned route of flight.

TAKEOFF OBSTACLE NOTES

- Rwy 4L: Light poles beginning 10' from DER, 77' right of centerline, up to 2' AGL/1959' MSL.  
Sign 33' from DER, 168' left of centerline, 5' AGL/1962' MSL.  
Building 1152' from DER, 757' right of centerline, 33' AGL/1987' MSL.  
Tree 1568' from DER, 902' right of centerline, 62' AGL/2016' MSL.  
Tree 1732' from DER, 862' right of centerline, 72' AGL/2026' MSL.  
Trees beginning 1844' from DER, 586' right of centerline, up to 91' AGL/2045' MSL.  
Trees beginning 2290' from DER, 373' right of centerline, up to 113' AGL/2064' MSL.  
Tree 3763' from DER, 1368' left of centerline, 92' AGL/2061' MSL.  
Trees beginning 4128' from DER, 1137' left of centerline, up to 106' AGL/2108' MSL.  
Tree 4726' from DER, 1558' left of centerline, 136' AGL/2133' MSL.  
Trees beginning 4728' from DER, 384' left of centerline, up to 129' AGL/2143' MSL.  
Trees beginning 5282' from DER, 607' left of centerline, up to 117' AGL/2171' MSL.  
Tree, building, vehicles on road beginning 5631' from DER, 765' left of centerline, up to 113' AGL/2174' MSL.  
Trees beginning 1 NM from DER, 1177' left of centerline, up to 65' AGL/2193' MSL.  
Trees, building beginning 1.1 NM from DER, 970' left of centerline, up to 94' AGL/2292' MSL.  
Trees beginning 1.2 NM from DER, 899' left of centerline, up to 116' AGL/2336' MSL.  
Trees beginning 1.3 NM from DER, 927' left of centerline, up to 120' AGL/2346' MSL.  
Trees beginning 1.4 NM from DER, 869' left of centerline, up to 96' AGL/2353' MSL.  
Trees, building, terrain beginning 1.5 NM from DER, 508' left of centerline, up to 85' AGL/2390' MSL.  
Buildings, trees beginning 1.6 NM from DER, 851' left of centerline, up to 40' AGL/2461' MSL.  
Trees, building, terrain beginning 1.7 NM from DER, 706' left of centerline, up to 59' AGL/2509' MSL.  
Trees, buildings, transmission lines, poles, terrain beginning 2 NM from DER, 14' left of centerline, up to 77' AGL/2522' MSL.  
Trees beginning 2.3 NM from DER, 37' right of centerline, up to 2344' MSL.  
Trees beginning 2.4 NM from DER, 12' right of centerline, up to 102' AGL/2432' MSL.  
Trees, transmission lines, poles, terrain beginning 2.5 NM from DER, 83' right of centerline, up to 125' AGL/2494' MSL.
- Rwy 4R: Light poles beginning 20' from DER, 389' left of centerline, up to 2' AGL/1959' MSL.  
Buildings, utility building beginning 85' from DER, 341' right of centerline, up to 19' AGL/1971' MSL.  
Buildings beginning 203' from DER, 284' right of centerline, up to 21' AGL/1974' MSL.  
Buildings beginning 303' from DER, 274' right of centerline, up to 22' AGL/1975' MSL.  
Buildings beginning 622' from DER, 276' right of centerline, up to 27' AGL/1981' MSL.  
Navaid, building beginning 920' from DER, 270' right of centerline, up to 33' AGL/1987' MSL.  
Trees, buildings, pole beginning 931' from DER, 257' right of centerline, up to 82' AGL/2036' MSL.  
Trees beginning 1854' from DER, 169' right of centerline, up to 91' AGL/2045' MSL.  
Trees beginning 1941' from DER, 86' right of centerline, up to 105' AGL/2059' MSL.  
Trees beginning 2300' from DER, 253' right of centerline, up to 113' AGL/2064' MSL.  
Trees beginning 2827' from DER, 584' right of centerline, up to 115' AGL/2065' MSL.  
Tree 3621' from DER, 127' left of centerline, 105' AGL/2053' MSL.  
Tree 4580' from DER, 1638' left of centerline, 112' AGL/2076' MSL.  
Trees beginning 4730' from DER, 843' left of centerline, up to 92' AGL/2087' MSL.  
Tree 4883' from DER, 946' left of centerline, 2089' MSL.  
Trees beginning 4900' from DER, 885' left of centerline, up to 105' AGL/2099' MSL.  
Trees beginning 5012' from DER, 870' left of centerline, up to 92' AGL/2109' MSL.  
Trees beginning 5292' from DER, 1108' left of centerline, up to 112' AGL/2121' MSL.  
Trees beginning 5401' from DER, 1268' left of centerline, up to 125' AGL/2134' MSL.  
Trees beginning 5500' from DER, 1720' left of centerline, up to 125' AGL/2139' MSL.  
Trees beginning 5620' from DER, 1266' left of centerline, up to 112' AGL/2146' MSL.  
Trees beginning 5987' from DER, 1868' left of centerline, up to 125' AGL/2154' MSL.  
Trees beginning 1.1 NM from DER, 1471' left of centerline, up to 94' AGL/2292' MSL.  
Trees beginning 1.2 NM from DER, 1401' left of centerline, up to 106' AGL/2321' MSL.  
Trees, building beginning 1.3 NM from DER, 1010' left of centerline, up to 111' AGL/2327' MSL.  
Trees, buildings, terrain beginning 1.5 NM from DER, 1019' left of centerline, up to 101' AGL/2332' MSL.  
Trees, buildings beginning 1.6 NM from DER, 1646' left of centerline, up to 73' AGL/2372' MSL.  
Buildings, trees beginning 1.7 NM from DER, 1694' left of centerline, up to 27' AGL/2377' MSL.  
Trees, buildings, terrain beginning 1.8 NM from DER, 2010' left of centerline, up to 57' AGL/2451' MSL.  
Buildings, trees, terrain beginning 1.9 NM from DER, 2005' left of centerline, up to 55' AGL/2470' MSL.  
Trees, buildings, transmission lines, poles, terrain, vegetation beginning 2 NM from DER, 34' left of centerline, up to 94' AGL/2522' MSL.  
Trees 2.4 NM from DER, 13' right of centerline, 102' AGL/2432' MSL.  
Trees, transmission lines, poles, terrain beginning 2.5 NM from DER, 103' right of centerline, up to 125' AGL/2494' MSL.

(CONTINUED ON FOLLOWING PAGE)

(CONTINUED)

TAKEOFF OBSTACLE NOTES

- Rwy 22L: Signs beginning 41' from DER 75' left of centerline up to 3' AGL/1954' MSL.  
Sign 96' from DER, 73' right of centerline, 3' AGL/1953' MSL.  
Sign 114' from DER, 236' left of centerline, 3' AGL/1955' MSL.  
Pole, building beginning 123' from DER, 473' left of centerline, up to 27' AGL/1979' MSL.  
Buildings beginning 450' from DER, 458' left of centerline, up to 43' AGL/1996' MSL.  
Building 539' from DER, 432' left of centerline, 44' AGL/1997' MSL.  
Building 605' from DER, 433' left of centerline, 45' AGL/1998' MSL.  
Trees, buildings, vehicles on the road, light poles, poles beginning 658' from DER, 291' left of centerline, up to 2008' MSL.  
Trees beginning 1126' from DER, 488' left of centerline, up to 59' AGL/2012' MSL.  
Trees, poles, transmission line, building beginning 1215' from DER, 172' left of centerline, up to 71' AGL/2024' MSL.  
Trees, pole beginning 2078' from DER, 206' left of centerline, up to 92' AGL/2043' MSL.  
Building, elevators beginning 4482' from DER, 574' left of centerline, up to 134' AGL/2084' MSL.
- Rwy 22R: Fence, vehicles on road, navaid beginning 1' from DER, 121' right of centerline, up to 6' AGL/1949' MSL.  
Signs, navaid beginning 36' from DER, 117' left of centerline, up to 3' AGL/1953' MSL.  
Vehicles on road 187' from DER, 446' right of centerline, 1954' MSL.  
Trees beginning 191' from DER, 500' right of centerline, up to 1975' MSL.  
Building 202' from DER, 496' left of centerline, 18' AGL/1969' MSL.  
Building 210' from DER, 501' left of centerline, 22' AGL/1973' MSL.  
Buildings beginning 267' from DER, 507' left of centerline, up to 23' AGL/1974' MSL.  
Trees, transmission lines, poles beginning 500' from DER, 64' right of centerline, up to 63' AGL/1995' MSL.  
Pole, vehicles on road, buildings beginning 651' from DER, 229' left of centerline, up to 38' AGL/1987' MSL.  
Tree, vehicles on road beginning 1020' from DER, 471' left of centerline, up to 40' AGL/1989' MSL.  
Tower 1178' from DER, 439' left of centerline, 40' AGL/1997' MSL.  
Tree, poles, transmission line beginning 1260' from DER, 3' left of centerline, up to 51' AGL/2000' MSL.  
Trees, poles, transmission line beginning 1493' from DER, 191' left of centerline, up to 70' AGL/2018' MSL.  
Building, elevators, tower beginning 2643' from DER, 1072' left of centerline, up to 134' AGL/2084' MSL.

NW-1, 27 NOV 2025 to 25 DEC 2025

NW-1, 27 NOV 2025 to 25 DEC 2025