

# HI-ILS or LOC Z RWY 4L

LOC I-SSC <b>110.1</b>	APCH CRS <b>043°</b>	Rwy Idg TDZE Arpt Elev	4L <b>10,014</b> <b>240</b> <b>241</b>	4R <b>8014</b> <b>236</b> <b>241</b>
---------------------------	-------------------------	------------------------------	---	---

[USAF]

SHAW AFB (KSSC)

RADAR or DME required. RADAR required when R-6002 active.

▼ \* When ALS inop, increase vis to 1½ miles.



MISSED APPROACH: Climbing to 2000, intercept SSC TACAN R-042 to GABLE and hold.

ATIS ★ <b>132.125 270.1</b>	APP CON ★ <b>125.4 318.1</b>	TOWER ★ <b>126.65 254.25</b>	GND CON <b>126.1 275.8</b>
--------------------------------	---------------------------------	---------------------------------	-------------------------------

CAUTION: When Rwy 22L VGSI inop, circling to Rwy 22L NA at night. Terrain 239' MSL, 200' prior to threshold, 200' right of course.

USAF Only: When VGSI inop, straight-in Rwy 4L authorized at night with MAJCOM A3 approval.

▲ 1400

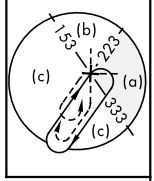
CAUTION: When VGSI inop, procedure NA at night.

▲ 2047

LOCALIZER 110.1  
I-SSC **110.1**



SHAW  
Chan 38 SSC **110.1**



▲ 1049

▲ 2047

▲ 672

▲ 543

▲ 435

▲ 409

▲ 652

▲ 1340

▲ 1400

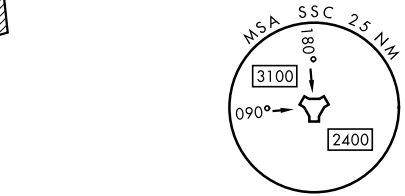
▲ 849

▲ 2000

▲ 11,000

▲ 874

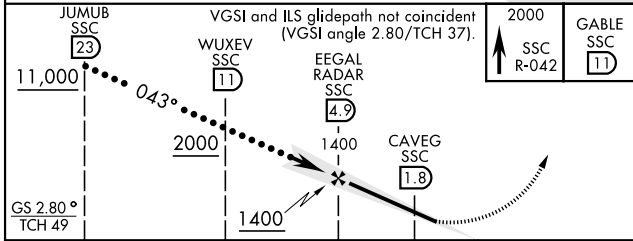
▲ 33



(IAF) JUMUB SSC **23**  
11,000

SSC **33**

EMERG SAFE ALT 100 NM 3800



VGSI and ILS glidepath not coincident (VGSI angle 2.80/TCH 37).

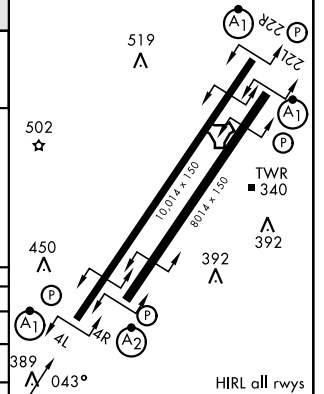
2000  
SSC R-042

GABLE SSC **11**

GS 2.80°  
TCH 49

← 3.1 NM → 0.6 NM

ELEV 241	TDZE 4L 240
	TDZE 4R 236



FAF to MAP 3.1 NM					
Knots	120	140	160	180	200
Min:Sec	1:33	1:20	1:10	1:02	0:56

CATEGORY	C	D	E
S-ILS 4L *	490/50	250	(300-1)
S-LOC 4L *	780/55	540	(600-1)
SIDESTEP * 4R	780-1¾	544	(600-1¾)
CIRCLING	1000-2¼ 759 (800-2¼)	1000-2½ 759 (800-2½)	1000-2¾ 759 (800-2¾)

# HI-ILS or LOC Z RWY 4L