

SUMTER, SOUTH CAROLINA

HI-TACAN Z RWY 22R

TACAN SSC Chan 38	APCH CRS 222°	22R Rwy ldg 10,014 TDZE 240 Arpt Elev 241	22L 8014 235 241
-----------------------------	-------------------------	---	--

[USAF]

SHAW AFB (KSSC)

RADAR required when R-6002 active.



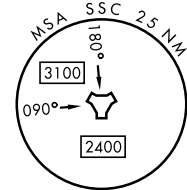
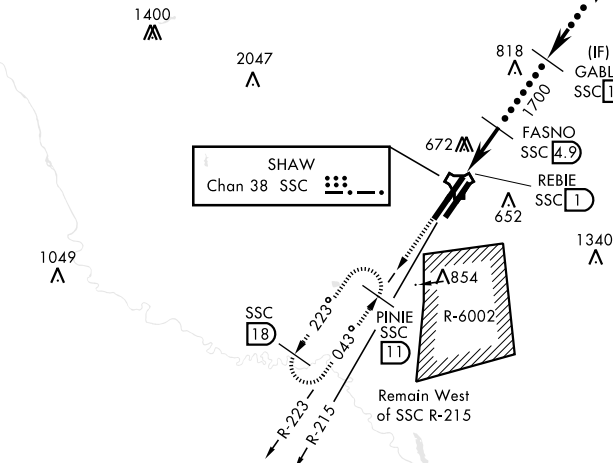
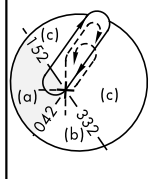
MISSED APPROACH: Climbing to 2000, intercept SSC TACAN R-223 to PINIE and hold.

▼ * When ALS inop, increase vis to 1½ miles.
** When ALS inop, increase vis to 1¾ miles.

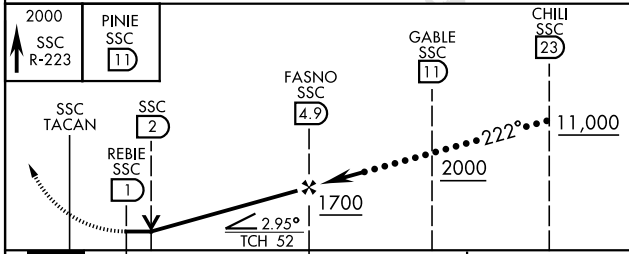
ATIS★ 132.125 270.1	APP CON★ 125.4 318.1	TOWER★ 126.65 254.25	GND CON 126.1 275.8
-------------------------------	--------------------------------	--------------------------------	-------------------------------

USAF Only: When Rwy 4L VGSi inop, circling to Rwy 4L at night requires approval from MAJCOM director of Ops or equivalent. Terrain 242' MSL, 200' prior to threshold.

USAF Only: When VGSi inop, sidestep to Rwy 22L, circling to Rwy 22L at night requires approval from MAJCOM Director of Ops or equivalent. Terrain 239' MSL, 200' prior to threshold, 200' right of course.

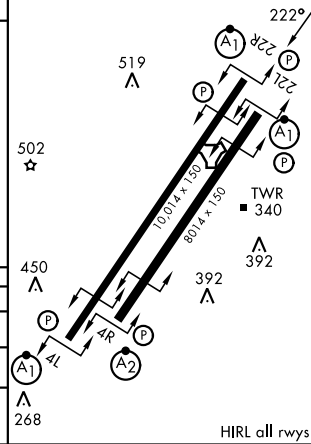


EMERG SAFE ALT 100 NM 3800



CATEGORY	C	D	E
S-22R*	760/55	520 (600-1)	
SIDESTEP 22L**	760/55	505 (600-1)	
CIRCLING	1000-2¼ 759 (800-2¼)	1000-2½ 759 (800-2½)	1000-2¾ 759 (800-2¾)

ELEV	241	TDZE 22R	240
		TDZE 22L	235



HIRL all rwys

SUMTER, SOUTH CAROLINA

33°58'N-80°28'W

SHAW AFB (KSSC)

Amdt 1 07NOV19

HI-TACAN Z RWY 22R

SE-2, 27 NOV 2025 to 25 DEC 2025

SE-2, 27 NOV 2025 to 25 DEC 2025