

HI-TACAN Z RWY 4L

TACAN SSC Chan 38	APCH CRS 043°	Rwy Idg TDZE 240 Arprt Elev 241	4L 8014	4R 236 241
-----------------------------	-------------------------	-----------------------------------------------------	-------------------	--------------------------------

[USAF]

SHAW AFB (KSSC)

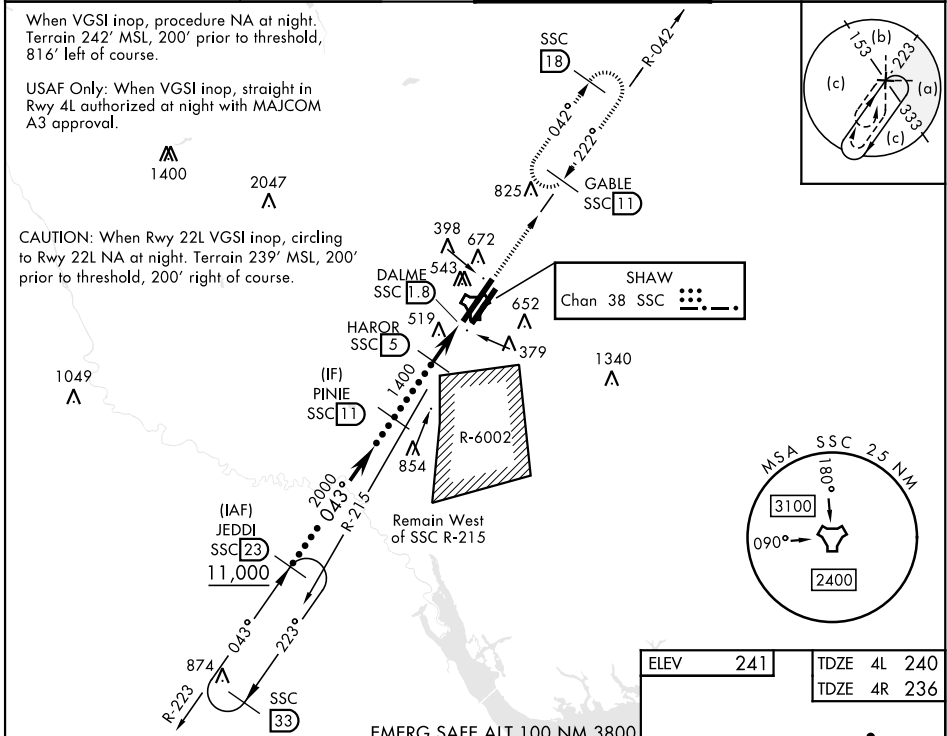
RADAR required when R-6002 active.



MISSED APPROACH: Climbing to 2000, intercept SSC TACAN R-042 to GABLE and hold.

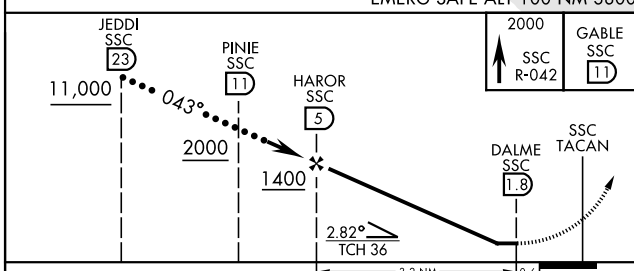
When ALS inop, increase vis to 1½ miles.

ATIS★ 132.125 270.1	APP CON★ 125.4 318.1	TOWER★ 126.65 254.25	GND CON 126.1 275.8
-------------------------------	--------------------------------	--------------------------------	-------------------------------

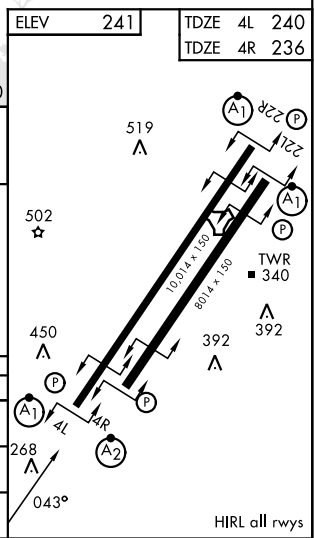


CAUTION: When Rwy 22L VGSI inop, circling to Rwy 22L NA at night. Terrain 239' MSL, 200' prior to threshold, 200' right of course.

USAF Only: When VGSI inop, straight in Rwy 4L authorized at night with MAJCOM A3 approval.



CATEGORY	C	D	E
S-4L*	800/60	560 (600-1½)	
SIDESTEP 4R*	800-1½	564 (600-1½)	
CIRCLING	1000-2¼ 759 (800-2¼)	1000-2½ 759 (800-2½)	1000-2¾ 759 (800-2¾)



HI-TACAN Z RWY 4L

SE-2, 27 NOV 2025 to 25 DEC 2025

SE-2, 27 NOV 2025 to 25 DEC 2025