

D-ATIS	132.65
CLNC DEL	128.25
CPDLC	
GND CON	21.7 257.6
ON TOWER	19.1 257.6
C DEP CON	65 348.725

WASHINGTON TOWER
119.1 257.6
POTOMAC DEP CON
125.65 348.725

DUPONT
DQO

054°—
(55)

11400
094° → Δ AGARD
(16)

DOCT
5000

NOTE: RNAV 1.
NOTE: RADAR required.
NOTE: Turbo-jets only.
NOTE: DQO transition ATC assigned only.
NOTE: DME/DME/IRU or GPS required.
NOTE: Departing Rwy 1 requires expeditious intercept of outbound course to ensure avoidance of P-56 boundary.
NOTE: Rwy 1 departures remain clear of P-56, climb on heading 007°, turn left as soon as practical to intercept course 331° to REVGE.
NOTE: Pilots shall comply with Ronald Reagan Washington Ntl Airport noise abatement and prohibited area (P-56) avoidance procedures as defined in the Chart Supplement Special Notices.
NOTE: Do not exceed 220K until REVGE.
NOTE: If unable to accept climb rate, advise ATC on initial contact.

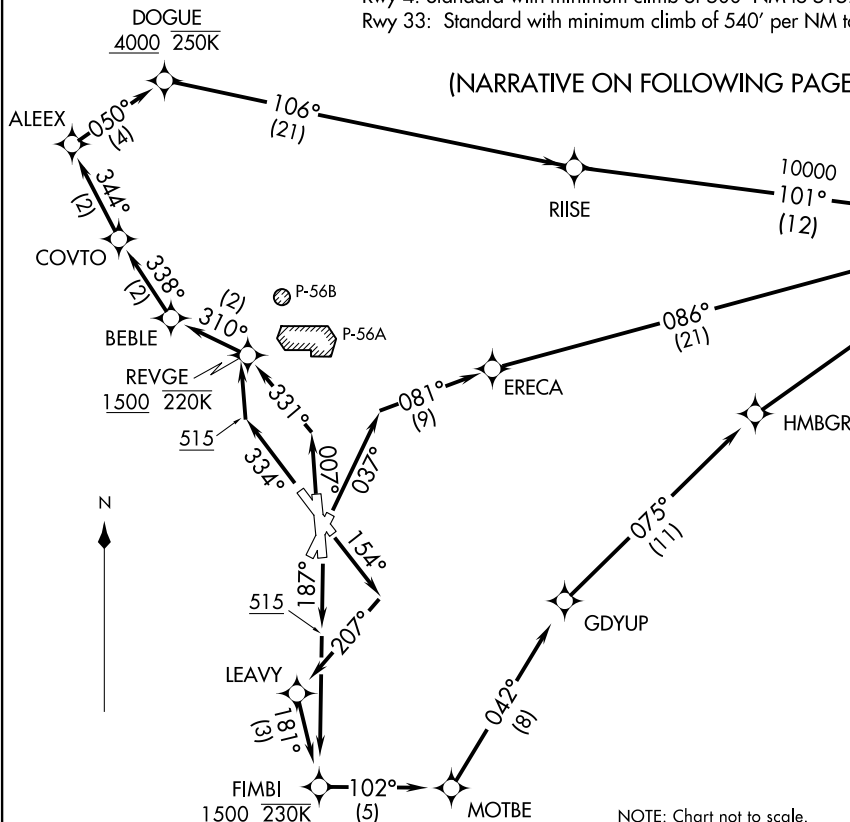
NOTE: Chart not to scale

(NARRATIVE ON FOLLOWING PAGE)

TAKEOFF MINIMUMS:

Rwy 1: Standard with minimum climb of 825' per NM to 600.
Rwys 15, 19: Standard with minimum climb of 500' per NM to 515.
Rwy 4: Standard with minimum climb of 500' NM to 515.
Rwy 33: Standard with minimum climb of 540' per NM to 640.

TOP ALTITUDE:
5000



DOCTR FIVE DEPARTURE (RNAV)
(DOCTR5.DOCTR) 31DEC20

WASHINGTON, DC
RONALD REAGAN WASHINGTON NTL (DCA)

<div><div>▼</div><div>DEPARTURE ROUTE DESCRIPTION</div><div><div>TAKEOFF RUNWAY 1:</div><div>Climb on heading 007° to intercept course 331° to REVGE, cross REVGE at or above 1500 and at or below 220K, then on track 310° to BEBLE, then on track 338° to COVTO, then on track 344 to ALEEX, then on track 050° to DOGUE, cross DOGUE at or above 4000 and at or below 250K, then on track 106° to RIISE, then on track 101° to DOCTR, cross DOCTR at or above 5000, thence....</div><div>TAKEOFF RUNWAY 4:</div><div>Climb on heading 037° to intercept course 081° to ERECA, then on track 086° to DOCTR, cross DOCTR at or above 5000, thence....</div><div>TAKEOFF RUNWAY 15:</div><div>Climb on heading 154° to intercept course 207° to LEAVY, then on track 181° to FIMBI, cross FIMBI at or above 1500 and at or below 230K, then on track 102° to MOTBE, then on track 042° to GDYUP, then on track 075° to HMBGR, then on track 078° to DOCTR, cross DOCTR at or above 5000, thence....</div><div>TAKEOFF RUNWAY 19:</div><div>Climb on heading 187° to 515, then direct FIMBI, cross FIMBI at or above 1500 and at or below 230 K, then on track 102° to MOTBE, then on track 042° to GDYUP, then on track 075° to HMBGR, then on track 078° to DOCTR, cross DOCTR at or above 5000, thence....</div><div>TAKEOFF RUNWAY 33:</div><div>Climb on heading 334° to 515, then direct REVGE, cross REVGE at or above 1500 and at or below 220K, then on track 310° to BEBLE, then on track 339° to COVTO, then on track 344° to ALEEX, then on track 050° to DOGUE, cross DOGUE at or above 4000 and at or below 250K, then on track 106° to RIISE, then on track 101° to DOCTR, cross DOCTR at or above 5000, thence....</div><div>....on assigned transition. Maintain 5000. Expect clearance to filed altitude within ten (10) minutes after departure.</div><div><div>AGARD TRANSITION (DOCTR5.AGARD)</div><div>DUPONT TRANSITION (DOCTR5.DQO)</div></div></div></div>	
--	--

NE-3, 27 NOV 2025 to 25 DEC 2025

NE-3, 27 NOV 2025 to 25 DEC 2025